

Product datasheet

Anti-ENT1 antibody ab48607

★ ★ ★ ☆ ☆ 2 Abreviews 7 References 1 Image

Overview

Product name	Anti-ENT1 antibody
Description	Rabbit polyclonal to ENT1
Host species	Rabbit
Tested applications	Suitable for: WB
Species reactivity	Reacts with: Human Predicted to work with: Cynomolgus monkey, Orangutan
Immunogen	Synthetic peptide conjugated to KLH derived from within residues 250 - 350 of Human ENT1. Read Abcam's proprietary immunogen policy (Peptide available as ab48606 .)
Positive control	This antibody gave a positive signal in Human Heart Tissue Lysate.

Properties

Form	Liquid
Storage instructions	Shipped at 4°C. Store at +4°C short term (1-2 weeks). Upon delivery aliquot. Store at -20°C or -80°C. Avoid freeze / thaw cycle.
Storage buffer	Preservative: 0.02% Sodium Azide Constituents: 1% BSA, PBS, pH 7.4
Purity	Immunogen affinity purified
Clonality	Polyclonal
Isotype	IgG

Applications

Our [Abpromise guarantee](#) covers the use of **ab48607** in the following tested applications.

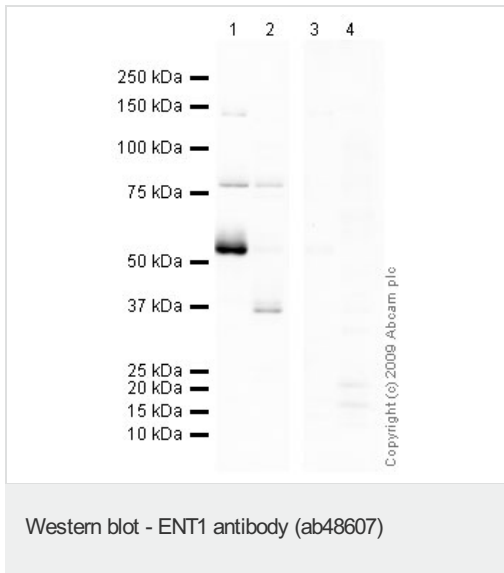
The application notes include recommended starting dilutions; optimal dilutions/concentrations should be determined by the end user.

Application	Abreviews	Notes
WB	★ ★ ★ ☆ ☆	Use a concentration of 2 µg/ml. Detects a band of approximately 55 kDa (predicted molecular weight: 50 kDa). Can be blocked with Human ENT1 peptide (ab48606) .

Target

Function	Mediates both influx and efflux of nucleosides across the membrane (equilibrative transporter). It is sensitive (ES) to low concentrations of the inhibitor nitrobenzylmercaptapurine riboside (NBMPR) and is sodium-independent. It has a higher affinity for adenosine. Inhibited by dipyridamole and dilazep (anticancer chemotherapeutics drugs).
Tissue specificity	Expressed in heart, brain, mammary gland, erythrocytes and placenta, and also in fetal liver and spleen.
Sequence similarities	Belongs to the SLC29A transporter family.
Post-translational modifications	Glycosylated.
Cellular localization	Basolateral cell membrane. Apical cell membrane. Predominantly localized in the basolateral membrane in polarised MDCK cells.

Images



All lanes : Anti-ENT1 antibody (ab48607) at 2 µg/ml

Lane 1 : Human heart tissue lysate - total protein (ab29431)

Lane 2 : Human brain tissue lysate - total protein (ab29466)

Lane 3 : Human heart tissue lysate - total protein (ab29431) with Human ENT1 peptide (ab48606) at 2 µg/ml

Lane 4 : Human brain tissue lysate - total protein (ab29466) with Human ENT1 peptide (ab48606) at 2 µg/ml

Lysates/proteins at 10 µg per lane.

Secondary

All lanes : Goat polyclonal to Rabbit IgG - H&L - Pre-Adsorbed (HRP) at 1/3000 dilution

Performed under reducing conditions.

Predicted band size: 50 kDa

Observed band size: 55 kDa

Additional bands at: 36 kDa, 78 kDa. We are unsure as to the identity of these extra bands.

Exposure time: 4 minutes

Please note: All products are "FOR RESEARCH USE ONLY AND ARE NOT INTENDED FOR DIAGNOSTIC OR THERAPEUTIC USE"

Our Abpromise to you: Quality guaranteed and expert technical support

- Replacement or refund for products not performing as stated on the datasheet
- Valid for 12 months from date of delivery
- Response to your inquiry within 24 hours
- We provide support in Chinese, English, French, German, Japanese and Spanish
- Extensive multi-media technical resources to help you
- We investigate all quality concerns to ensure our products perform to the highest standards

If the product does not perform as described on this datasheet, we will offer a refund or replacement. For full details of the Abpromise, please visit <http://www.abcam.com/abpromise> or contact our technical team.

Terms and conditions

- Guarantee only valid for products bought direct from Abcam or one of our authorized distributors