

Product datasheet

Anti-EPB4IL2 antibody ab110118

2 Images

Overview

---

<b>Product name</b>	Anti-EPB4IL2 antibody
<b>Description</b>	Goat polyclonal to EPB4IL2
<b>Host species</b>	Goat
<b>Tested applications</b>	<b>Suitable for:</b> ELISA, IHC-P
<b>Species reactivity</b>	<b>Reacts with:</b> Human
<b>Immunogen</b>	Synthetic peptide: DYDPEEHGSID with a Cysteine residue linker, corresponding to internal sequence amino acids 347-357 of Human EPB4IL2  <a href="#">Run BLAST with</a> <a href="#">Run BLAST with</a>
<b>Positive control</b>	Human Breast and Human Uterus tissue.

Properties

---

<b>Form</b>	Liquid
<b>Storage instructions</b>	Shipped at 4°C. Store at +4°C short term (1-2 weeks). Upon delivery aliquot. Store at -20°C long term.
<b>Storage buffer</b>	Preservative: 0.02% Sodium Azide Constituents: 0.5% BSA, Tris buffered saline, pH 7.3
<b>Purity</b>	Immunogen affinity purified
<b>Clonality</b>	Polyclonal
<b>Isotype</b>	IgG

Applications

---

Our [Abpromise guarantee](#) covers the use of **ab110118** in the following tested applications.

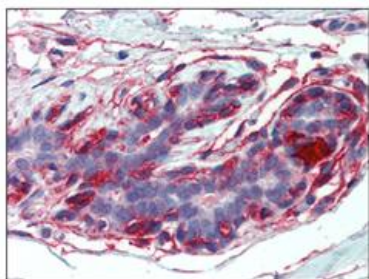
The application notes include recommended starting dilutions; optimal dilutions/concentrations should be determined by the end user.

Application	Abreviews	Notes
ELISA		1/16000.
IHC-P		Use a concentration of 2.5 µg/ml. antigen retrieval is recommended.

## Target

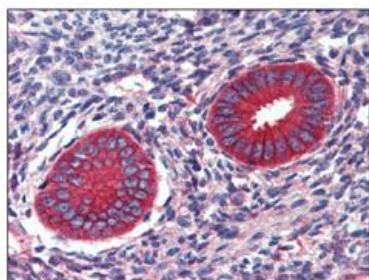
<b>Tissue specificity</b>	Widely expressed.
<b>Sequence similarities</b>	Contains 1 FERM domain.
<b>Post-translational modifications</b>	Phosphorylated upon DNA damage, probably by ATM or ATR.
<b>Cellular localization</b>	Cytoplasm > cytoskeleton.

## Images



Immunohistochemical analysis of EPB4IL2 expression in paraffin embedded formalin fixed Human breast tissue section using 2.5 µg/ml ab110118.

Immunohistochemistry (Formalin/PFA-fixed paraffin-embedded sections) - EPB4IL2 antibody (ab110118)



Immunohistochemical analysis of EPB4IL2 expression in paraffin embedded formalin fixed Human uterus tissue section using 2.5 µg/ml ab110118.

Immunohistochemistry (Formalin/PFA-fixed paraffin-embedded sections) - EPB4IL2 antibody (ab110118)

**Please note:** All products are "FOR RESEARCH USE ONLY AND ARE NOT INTENDED FOR DIAGNOSTIC OR THERAPEUTIC USE"

**Our Abpromise to you: Quality guaranteed and expert technical support**

- Replacement or refund for products not performing as stated on the datasheet
- Valid for 12 months from date of delivery
- Response to your inquiry within 24 hours
  
- We provide support in Chinese, English, French, German, Japanese and Spanish
- Extensive multi-media technical resources to help you
- We investigate all quality concerns to ensure our products perform to the highest standards

If the product does not perform as described on this datasheet, we will offer a refund or replacement. For full details of the Abpromise, please visit <http://www.abcam.com/abpromise> or contact our technical team.

### **Terms and conditions**

---

- Guarantee only valid for products bought direct from Abcam or one of our authorized distributors