

Product datasheet

Anti-ESE1 antibody [ELF3B10C4] α b50746

1 Image

Overview

Product name	Anti-ESE1 antibody [ELF3B10C4]
Description	Mouse monoclonal [ELF3B10C4] to ESE1
Host species	Mouse
Tested applications	Suitable for: WB, Dot blot
Species reactivity	Reacts with: Recombinant fragment Predicted to work with: Human
Immunogen	Recombinant fragment (Human)

Properties

Form	Liquid
Storage instructions	Shipped at 4°C. Store at +4°C short term (1-2 weeks). Upon delivery aliquot. Store at -20°C long term.
Storage buffer	Preservative: 0.05% Sodium Azide Constituents: 1% BSA, PBS, pH 7.4
Purity	Protein G purified
Purification notes	Protein G purified from culture of supernatant of hybridoma cultured in a medium containing bovine IgG-depleted (~95%) fetal bovine serum. Filtered through a 0.22 μ m membrane
Clonality	Monoclonal
Clone number	ELF3B10C4
Isotype	IgG1

Applications

Our [Abpromise guarantee](#) covers the use of **ab50746** in the following tested applications.

The application notes include recommended starting dilutions; optimal dilutions/concentrations should be determined by the end user.

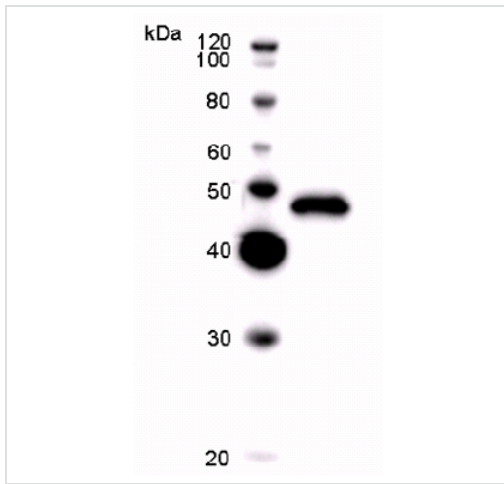
Application	Abreviews	Notes
WB		Use at an assay dependent dilution. Predicted molecular weight: 41 kDa.

Application	Abreviews	Notes
Dot blot		Use at an assay dependent dilution.

Target

Function	Transcriptional activator that binds and transactivates ETS sequences containing the consensus nucleotide core sequence GGA[AT]. Acts synergistically with POU2F3 to transactivate the SPRR2A promoter and with RUNX1 to transactivate the ANGPT1 promoter. Also transactivates collagenase, CCL20, CLND7, FLG, KRT8, NOS2, PTGS2, SPRR2B, TGFBR2 and TGM3 promoters. Represses KRT4 promoter activity. Involved in mediating vascular inflammation. May play an important role in epithelial cell differentiation and tumorigenesis. May be a critical downstream effector of the ERBB2 signaling pathway. May be associated with mammary gland development and involution. Plays an important role in the regulation of transcription with TATA-less promoters in preimplantation embryos, which is essential in preimplantation development.
Tissue specificity	Expressed exclusively in tissues containing a high content of terminally differentiated epithelial cells including mammary gland, colon, trachea, kidney, prostate, uterus, stomach and skin.
Sequence similarities	Belongs to the ETS family. Contains 1 ETS DNA-binding domain. Contains 1 PNT (pointed) domain.
Domain	the 9aaTAD motif is a transactivation domain present in a large number of yeast and animal transcription factors.
Cellular localization	Cytoplasm. Nucleus. Localizes to the cytoplasm where it has been shown to transform MCF-12A mammary epithelial cells via a novel cytoplasmic mechanism. Also transiently expressed and localized to the nucleus where it induces apoptosis in non-transformed breast epithelial cells MCF-10A and MCF-12A via a transcription-dependent mechanism.

Images



Western blot - ESE1 antibody [ELF3B10C4]
(ab50746)

Lane 1 : Molecular weight markers

Lane 2 : Anti-ESE1 antibody [ELF3B10C4]
(ab50746)

Lane 2 : Immunising peptide

Predicted band size: 41 kDa

Observed band size: 57 kDa

This antibody has only been tested in WB against the recombinant fragment used as immunogen. We have no data on the detection of endogenous protein.

Please note: All products are "FOR RESEARCH USE ONLY AND ARE NOT INTENDED FOR DIAGNOSTIC OR THERAPEUTIC USE"

Our Abpromise to you: Quality guaranteed and expert technical support

- Replacement or refund for products not performing as stated on the datasheet
- Valid for 12 months from date of delivery
- Response to your inquiry within 24 hours
- We provide support in Chinese, English, French, German, Japanese and Spanish
- Extensive multi-media technical resources to help you
- We investigate all quality concerns to ensure our products perform to the highest standards

If the product does not perform as described on this datasheet, we will offer a refund or replacement. For full details of the Abpromise, please visit <http://www.abcam.com/abpromise> or contact our technical team.

Terms and conditions

- Guarantee only valid for products bought direct from Abcam or one of our authorized distributors