


Product datasheet

Anti-EXOC6B antibody ab116383

1 References 2 Images

Overview

Product name	Anti-EXOC6B antibody
Description	Rabbit polyclonal to EXOC6B
Host species	Rabbit
Tested applications	Suitable for: WB, ICC/IF
Species reactivity	Reacts with: Mouse Predicted to work with: Human 
Immunogen	Synthetic peptide conjugated to KLH, corresponding to a region within C-terminal amino acids 766-796 of Human EXOC6B (NP_056004.1).
Positive control	Mouse heart tissue lysate IF/ICC: Hela cell line.

Properties

Form	Liquid
Storage instructions	Shipped at 4°C. Store at 4°C (up to 6 months). Store at -20°C long term.
Storage buffer	Preservative: 0.09% Sodium azide Constituent: 99% PBS
Purity	Immunogen affinity purified
Purification notes	ab116383 was purified through a Protein A column, followed by peptide affinity purification.
Clonality	Polyclonal
Isotype	IgG

Applications

Our [Abpromise guarantee](#) covers the use of **ab116383** in the following tested applications.

The application notes include recommended starting dilutions; optimal dilutions/concentrations should be determined by the end user.

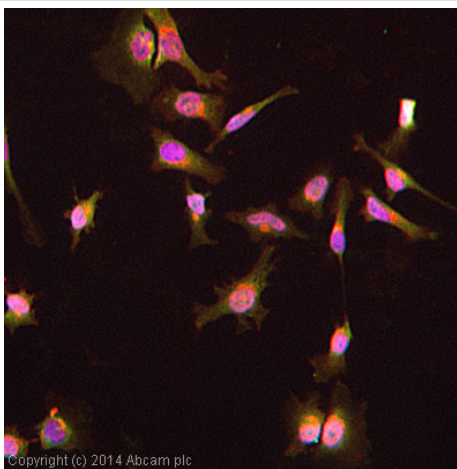
Application	Abreviews	Notes
WB		1/100 - 1/500. Predicted molecular weight: 94 kDa.

Application	Abreviews	Notes
ICC/IF		Use a concentration of 5 µg/ml.

Target

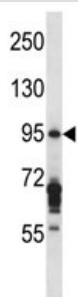
Function	Component of the exocyst complex involved in the docking of exocytic vesicles with fusion sites on the plasma membrane.
Sequence similarities	Belongs to the SEC15 family.

Images



Immunocytochemistry/ Immunofluorescence - Anti-EXOC6B antibody (ab116383)

ab116383 stained HeLa cells. The cells were 4% formaldehyde fixed for 10 minutes at room temperature and then incubated in 1%BSA / 10% normal goat serum / 0.3M glycine in 0.1% PBS-Tween for 1 hour at room temperature to permeabilise the cells and block non-specific protein-protein interactions. The cells were then incubated with the antibody (ab116383 at 5µg/ml) overnight at +4°C. The secondary antibody (pseudo-colored green) was Goat Anti-Rabbit IgG H&L (Alexa Fluor® 488) preadsorbed ([ab150081](#)) used at a 1/1000 dilution for 1 hour at room temperature. Alexa Fluor® 594 WGA was used to label plasma membranes (pseudo-colored red) at a 1/200 dilution for 1 hour at room temperature. DAPI was used to stain the cell nuclei (pseudo-colored blue) at a concentration of 1.43µM for 1 hour at room temperature.



Anti-EXOC6B antibody (ab116383) at 1/100 dilution + Mouse heart tissue lysate at 35 µg

Predicted band size: 94 kDa

Western blot - Anti-EXOC6B antibody (ab116383)

Please note: All products are "FOR RESEARCH USE ONLY AND ARE NOT INTENDED FOR DIAGNOSTIC OR THERAPEUTIC USE"

Our Abpromise to you: Quality guaranteed and expert technical support

- Replacement or refund for products not performing as stated on the datasheet
- Valid for 12 months from date of delivery
- Response to your inquiry within 24 hours
- We provide support in Chinese, English, French, German, Japanese and Spanish
- Extensive multi-media technical resources to help you
- We investigate all quality concerns to ensure our products perform to the highest standards

If the product does not perform as described on this datasheet, we will offer a refund or replacement. For full details of the Abpromise, please visit <http://www.abcam.com/abpromise> or contact our technical team.

Terms and conditions

- Guarantee only valid for products bought direct from Abcam or one of our authorized distributors