

## Product datasheet

# Anti-Eph receptor A1 antibody - Carboxyterminal end ab37857

[2 Images](#)

### Overview

---

<b>Product name</b>	Anti-Eph receptor A1 antibody - Carboxyterminal end
<b>Description</b>	Rabbit polyclonal to Eph receptor A1 - Carboxyterminal end
<b>Host species</b>	Rabbit
<b>Tested applications</b>	<b>Suitable for:</b> ELISA, WB, IHC-P
<b>Species reactivity</b>	<b>Reacts with:</b> Human <b>Predicted to work with:</b> Mouse
<b>Immunogen</b>	This antibody is generated from rabbits immunized with a KLH conjugated synthetic peptide selected from aa 934-950 (FHSAGLDTMECVLELTA) of human EphA1 <a href="#">Run BLAST with ExPASy</a> <a href="#">Run BLAST with NCBI</a>
<b>Positive control</b>	HeLa cell lysate. breast carcinoma

### Properties

---

<b>Form</b>	Liquid
<b>Storage instructions</b>	Shipped at 4°C. Store at +4°C short term (1-2 weeks). Upon delivery aliquot. Store at -20°C or -80°C. Avoid freeze / thaw cycle.
<b>Storage buffer</b>	Preservative: 0.09% Sodium Azide Constituents: PBS
<b>Purity</b>	Protein G purified
<b>Clonality</b>	Polyclonal
<b>Isotype</b>	IgG

### Applications

---

Our [Abpromise guarantee](#) covers the use of **ab37857** in the following tested applications.

The application notes include recommended starting dilutions; optimal dilutions/concentrations should be determined by the end user.

Application	Abreviews	Notes
ELISA		1/1000.
WB		1/100 - 1/500. Detects a band of approximately 108 kDa (predicted molecular weight: 108 kDa).
IHC-P		1/50 - 1/100.

## Target

### Function

Receptor tyrosine kinase which binds promiscuously membrane-bound ephrin-A family ligands residing on adjacent cells, leading to contact-dependent bidirectional signaling into neighboring cells. The signaling pathway downstream of the receptor is referred to as forward signaling while the signaling pathway downstream of the ephrin ligand is referred to as reverse signaling. Binds with a low affinity EFNA3 and EFNA4 and with a high affinity to EFNA1 which most probably constitutes its cognate/functional ligand. Upon activation by EFNA1 induces cell attachment to the extracellular matrix inhibiting cell spreading and motility through regulation of ILK and downstream RHOA and RAC. Plays also a role in angiogenesis and regulates cell proliferation. May play a role in apoptosis.

### Tissue specificity

Overexpressed in several carcinomas.

### Sequence similarities

Belongs to the protein kinase superfamily. Tyr protein kinase family. Ephrin receptor subfamily. Contains 1 Eph LBD (Eph ligand-binding) domain. Contains 2 fibronectin type-III domains. Contains 1 protein kinase domain. Contains 1 SAM (sterile alpha motif) domain.

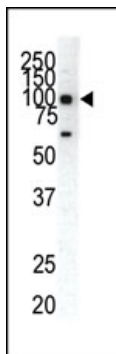
### Post-translational modifications

Phosphorylated. Autophosphorylation is stimulated by its ligand EFNA1. Ubiquitinated.

### Cellular localization

Cell membrane.

## Images



Western blot - Ephrin A1 Receptor antibody (ab37857)

Anti-Eph receptor A1 antibody - Carboxyterminal end (ab37857) at 1/100 dilution + HeLa cell lysate

### Secondary

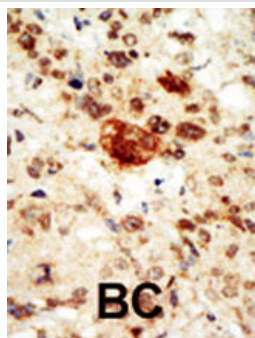
HRP-anti-rabbit

Developed using the ECL technique.

**Predicted band size:** 108 kDa

**Observed band size:** 108 kDa

**Additional bands at:** 60 kDa. We are unsure as to the identity of these extra bands.



Immunohistochemical analysis of Ephrin A1 Receptor in formalin-fixed, paraffin-embedded human breast carcinoma using 1/50 ab37857.

Immunohistochemistry (Formalin/PFA-fixed paraffin-embedded sections) - Ephrin A1 Receptor antibody - Carboxyterminal end (ab37857)

**Please note:** All products are "FOR RESEARCH USE ONLY AND ARE NOT INTENDED FOR DIAGNOSTIC OR THERAPEUTIC USE"

### Our Abpromise to you: Quality guaranteed and expert technical support

- Replacement or refund for products not performing as stated on the datasheet
- Valid for 12 months from date of delivery
- Response to your inquiry within 24 hours
- We provide support in Chinese, English, French, German, Japanese and Spanish
- Extensive multi-media technical resources to help you
- We investigate all quality concerns to ensure our products perform to the highest standards

If the product does not perform as described on this datasheet, we will offer a refund or replacement. For full details of the Abpromise, please visit <http://www.abcam.com/abpromise> or contact our technical team.

### Terms and conditions

- Guarantee only valid for products bought direct from Abcam or one of our authorized distributors