

## Product datasheet

# Anti-FAM101A antibody ab81517

1 Image

### Overview

<b>Product name</b>	Anti-FAM101A antibody
<b>Description</b>	Rabbit polyclonal to FAM101A
<b>Tested applications</b>	<b>Suitable for:</b> WB, ELISA
<b>Species reactivity</b>	<b>Reacts with:</b> Human <b>Predicted to work with:</b> Mouse, Rat, Horse, Guinea pig, Dog, Pig
<b>Immunogen</b>	Synthetic peptide, corresponding to a region within the internal region amino acids 73-122 (LEPRPRALRF RSTTIIFPKH ARSTFRTTLH CSLGRPSRWF TASVQLQLCQ) of Human FAM101A (Accession number: EAW98447) <a href="#">Run BLAST with ExPASy</a> <a href="#">Run BLAST with NCBI</a>
<b>Positive control</b>	721_B cell lysate

### Properties

<b>Form</b>	Liquid
<b>Storage instructions</b>	Shipped at 4°C. Upon delivery aliquot and store at -20°C or -80°C. Avoid repeated freeze / thaw cycles.
<b>Storage buffer</b>	Preservative: None Constituents: 2% Sucrose, PBS
<b>Purity</b>	Immunogen affinity purified
<b>Clonality</b>	Polyclonal
<b>Isotype</b>	IgG

### Applications

Our [Abpromise guarantee](#) covers the use of **ab81517** in the following tested applications.

The application notes include recommended starting dilutions; optimal dilutions/concentrations should be determined by the end user.

Application	Abreviews	Notes
WB		Use a concentration of 1 µg/ml. Predicted molecular weight: 23 kDa. Good results were obtained when blocked with 5% non-fat dry milk in 0.05% PBS-T.

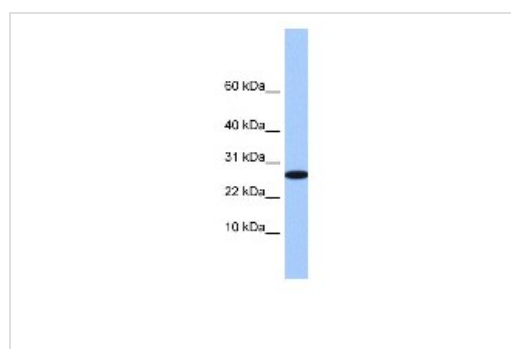
Application	Abreviews	Notes
-------------	-----------	-------

ELISA  
 Use at an assay dependent concentration.  
 ELISA titre using peptide based assay: 1:312500.

## Target

**Sequence similarities** Belongs to the FAM101 family.

## Images



Western blot - FAM101A antibody (ab81517)

Anti-FAM101A antibody (ab81517) at 1 µg/ml  
 ( in 5% skim milk / PBS buffer) + 721\_B cell  
 lysate at 10 µg

### Secondary

HRP conjugated anti-Rabbit IgG at 1/50000  
 dilution

**Predicted band size** : 23 kDa

**Observed band size** : 28 kDa

**Please note:** All products are "FOR RESEARCH USE ONLY AND ARE NOT INTENDED FOR DIAGNOSTIC OR THERAPEUTIC USE"

## Our Abpromise to you: Quality guaranteed and expert technical support

- Replacement or refund for products not performing as stated on the datasheet
- Valid for 12 months from date of delivery
- Response to your inquiry within 24 hours
- We provide support in Chinese, English, French, German, Japanese and Spanish
- Extensive multi-media technical resources to help you
- We investigate all quality concerns to ensure our products perform to the highest standards

If the product does not perform as described on this datasheet, we will offer a refund or replacement. For full details of the Abpromise, please visit <http://www.abcam.com/abpromise> or contact our technical team.

## Terms and conditions

- Guarantee only valid for products bought direct from Abcam or one of our authorized distributors