

Product datasheet

Anti-FAM73A antibody ab121532

3 Images

Overview

Product name	Anti-FAM73A antibody
Description	Rabbit polyclonal to FAM73A
Host species	Rabbit
Tested applications	Suitable for: ICC/IF, IHC-P, WB
Species reactivity	Reacts with: Human
Immunogen	antigen sequence, corresponding to internal sequence amino acids 279-405 of Human FAM73A.
Positive control	Human small intestine tissue; Human tonsil and liver tissue lysates; RT-4 and U-251 MG cell lysates.

Properties

Form	Liquid
Storage instructions	Shipped at 4°C. Upon delivery aliquot and store at -20°C. Avoid freeze / thaw cycles.
Storage buffer	pH: 7.20 Preservative: 0.02% Sodium azide Constituents: 59% PBS, 40% Glycerol
Purity	Immunogen affinity purified
Clonality	Polyclonal
Isotype	IgG

Applications

Our [Abpromise guarantee](#) covers the use of **ab121532** in the following tested applications.

The application notes include recommended starting dilutions; optimal dilutions/concentrations should be determined by the end user.

Application	Abreviews	Notes
ICC/IF		Use a concentration of 1 - 4 µg/ml. Recommend PFA Fixation and Triton X-100 treatment

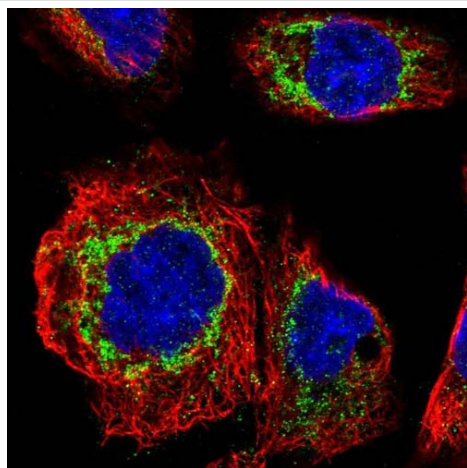
Application	Abreviews	Notes
IHC-P		1/10 - 1/20. Perform heat mediated antigen retrieval with citrate buffer pH 6 before commencing with IHC staining protocol.
WB		1/250 - 1/500.

Target

Sequence similarities Belongs to the FAM73 family.

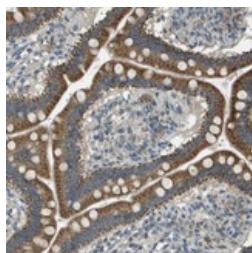
Cellular localization Membrane.

Images



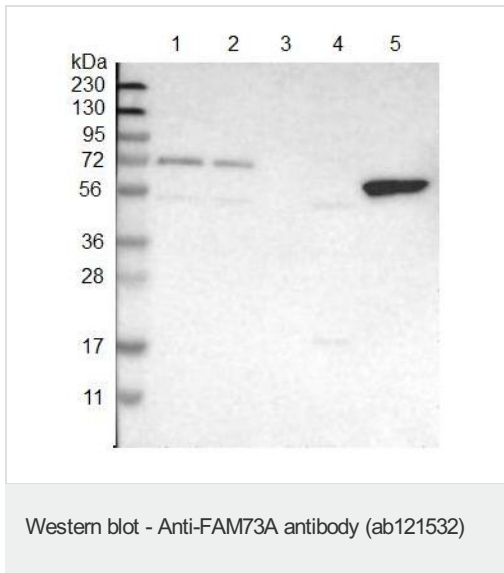
Immunofluorescent staining of Human cell line A-431 shows positivity in mitochondria. Recommended concentration of ab121532 1-4 µg/ml. Cells treated with PFA/Triton X-100.

Immunocytochemistry/ Immunofluorescence - Anti-FAM73A antibody (ab121532)



ab121532 at 1/10 dilution staining FAM73A in paraffin-embedded Human small intestine tissue by Immunohistochemistry.

Immunohistochemistry (Formalin/PFA-fixed paraffin-embedded sections) - Anti-FAM73A antibody (ab121532)



All lanes : Anti-FAM73A antibody
(ab121532) at 1/250 dilution

Lane 1 : RT-4 cell lysate

Lane 2 : U-251 MG cell lysate

Lane 3 : Human Plasma

Lane 4 : Human liver tissue lysate

Lane 5 : Human tonsil tissue lysate

Developed using the ECL technique.

Please note: All products are "FOR RESEARCH USE ONLY AND ARE NOT INTENDED FOR DIAGNOSTIC OR THERAPEUTIC USE"

Our Abpromise to you: Quality guaranteed and expert technical support

- Replacement or refund for products not performing as stated on the datasheet
- Valid for 12 months from date of delivery
- Response to your inquiry within 24 hours
- We provide support in Chinese, English, French, German, Japanese and Spanish
- Extensive multi-media technical resources to help you
- We investigate all quality concerns to ensure our products perform to the highest standards

If the product does not perform as described on this datasheet, we will offer a refund or replacement. For full details of the Abpromise, please visit <http://www.abcam.com/abpromise> or contact our technical team.

Terms and conditions

- Guarantee only valid for products bought direct from Abcam or one of our authorized distributors