

## Product datasheet

# Anti-FCRL4 antibody ab98279

1 Image

### Overview

<b>Product name</b>	Anti-FCRL4 antibody
<b>Description</b>	Rabbit polyclonal to FCRL4
<b>Host species</b>	Rabbit
<b>Tested applications</b>	<b>Suitable for:</b> WB
<b>Species reactivity</b>	<b>Reacts with:</b> Human <b>Predicted to work with:</b> Cat, Pig
<b>Immunogen</b>	Synthetic peptide corresponding to a region within N terminal amino acids 35-84 (FKGERVTLTC NGFQFYATEK TTWYHRHYWG EKLTLTPGNT LEVRESGLYR) of Human IRTA1 (NP_112572). <a href="#">Run BLAST with ExPASy</a> <a href="#">Run BLAST with NCBI</a>
<b>Positive control</b>	293T cell lysate

### Properties

<b>Form</b>	Liquid
<b>Storage instructions</b>	Shipped at 4°C. Upon delivery aliquot and store at -20°C. Avoid freeze / thaw cycles.
<b>Storage buffer</b>	Preservative: None Constituents: 2% Sucrose, PBS
<b>Purity</b>	Immunogen affinity purified
<b>Clonality</b>	Polyclonal
<b>Isotype</b>	IgG

### Applications

Our [Abpromise guarantee](#) covers the use of **ab98279** in the following tested applications.

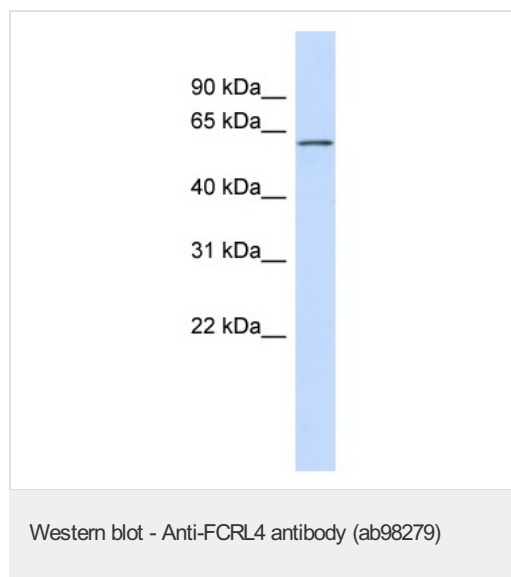
The application notes include recommended starting dilutions; optimal dilutions/concentrations should be determined by the end user.

Application	Abreviews	Notes
WB		Use a concentration of 1 µg/ml. Predicted molecular weight: 57 kDa. Good results were obtained when blocked with 5% non-fat dry milk in 0.05% PBS-T.

## Target

<b>Function</b>	May function as an inhibitor of the B-cell receptor signaling. May function in the B-cell-mediated immune response.
<b>Tissue specificity</b>	Specifically expressed by memory and monocytoid B-cells which populate spleen and lymph nodes. Preferentially expressed in memory B-cells associated with mucosal tissue (at protein level).
<b>Involvement in disease</b>	Note=A chromosomal aberration involving FCRL4 is found in non-Hodgkin lymphoma (NHG). Translocation t(1;1)(p36.3; q21.1-2). Note=A chromosomal aberration involving FCRL4 is found in multiple myeloma (MM). Translocation t(1;14)(q21;q32) that forms a FCRL4-IGHA1 fusion protein.
<b>Sequence similarities</b>	Contains 4 Ig-like C2-type (immunoglobulin-like) domains.
<b>Post-translational modifications</b>	Phosphorylated on cytoplasmic tyrosines upon activation.
<b>Cellular localization</b>	Cell membrane.

## Images



Anti-FCRL4 antibody (ab98279) at 1 µg/ml +  
293T cell lysate at 10 µg

**Predicted band size:** 57 kDa

Gel concentration: 12%

**Please note:** All products are "FOR RESEARCH USE ONLY AND ARE NOT INTENDED FOR DIAGNOSTIC OR THERAPEUTIC USE"

## Our Abpromise to you: Quality guaranteed and expert technical support

- Replacement or refund for products not performing as stated on the datasheet
- Valid for 12 months from date of delivery
- Response to your inquiry within 24 hours
- We provide support in Chinese, English, French, German, Japanese and Spanish
- Extensive multi-media technical resources to help you
- We investigate all quality concerns to ensure our products perform to the highest standards

If the product does not perform as described on this datasheet, we will offer a refund or replacement. For full details of the Abpromise, please visit <http://www.abcam.com/abpromise> or contact our technical team.

## Terms and conditions

---

- Guarantee only valid for products bought direct from Abcam or one of our authorized distributors