

## Product datasheet

# Anti-FENS1 antibody ab125329

[4 Images](#)

### Overview

<b>Product name</b>	Anti-FENS1 antibody
<b>Description</b>	Rabbit polyclonal to FENS1
<b>Host species</b>	Rabbit
<b>Tested applications</b>	<b>Suitable for:</b> IHC-P, WB
<b>Species reactivity</b>	<b>Reacts with:</b> Mouse, Human <b>Predicted to work with:</b> Rat, Rabbit, Horse, Chicken, Guinea pig, Cow, Cat, Dog, Zebrafish



### Immunogen

Synthetic peptide corresponding to a region within N terminal amino acids 42-91 (ASEDRTIRVW LKRDSGQYWP SIYHTMASPC SAMAYHHDSR RIFVGGDNGA) of Mouse FENS1 (NP\_081333).

[Run BLAST with ExPASy](#) [Run BLAST with NCBI](#)

### Positive control

Mouse heart lysate, Human kidney lysate

### Properties

<b>Form</b>	Liquid
<b>Storage instructions</b>	Shipped at 4°C. Upon delivery aliquot and store at -20°C. Avoid repeated freeze / thaw cycles.
<b>Storage buffer</b>	Constituents: 97% PBS, 2% Sucrose
<b>Purity</b>	Immunogen affinity purified
<b>Clonality</b>	Polyclonal
<b>Isotype</b>	IgG

### Applications

Our [Abpromise guarantee](#) covers the use of **ab125329** in the following tested applications.

The application notes include recommended starting dilutions; optimal dilutions/concentrations should be determined by the end user.

Application	Abreviews	Notes
IHC-P		Use at an assay dependent concentration.

Application	Abreviews	Notes
WB		Use a concentration of 1 µg/ml. Good results were obtained when blocked with 5% non-fat dry milk in 0.05% PBS-T.

## Target

### Sequence similarities

Contains 1 FYVE-type zinc finger.  
Contains 7 WD repeats.

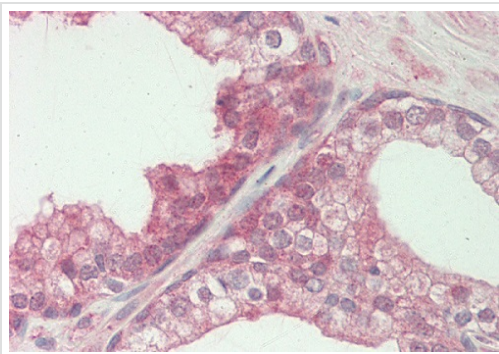
### Domain

The FYVE-type zinc finger domain mediates interactions with phosphatidylinositol 3-phosphate in membranes of early endosomes and penetrates bilayers. The FYVE domain insertion into PtdIns(3)P-enriched membranes is substantially increased in acidic conditions.

### Cellular localization

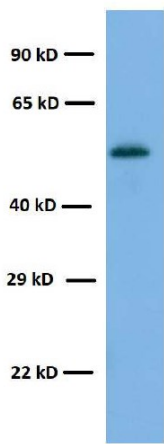
Early endosome.

## Images



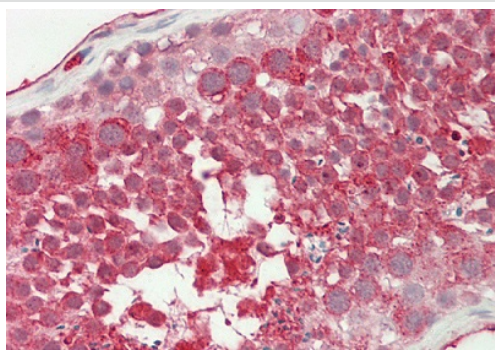
Formalin fixed paraffin embedded human prostate tissue staining FENS1 with ab125329 at 10 µg/ml

Immunohistochemistry (Formalin/PFA-fixed paraffin-embedded sections) - Anti-FENS1 antibody (ab125329)



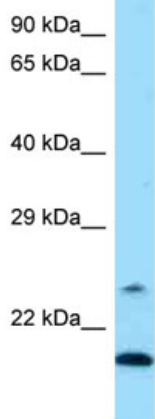
Western blot - Anti-FENS1 antibody (ab125329)

Anti-FENS1 antibody (ab125329) at 1  $\mu$ g/ml +  
Human Kidney



Immunohistochemistry (Formalin/PFA-fixed paraffin-  
embedded sections) - Anti-FENS1 antibody  
(ab125329)

Formalin fixed paraffin embedded human  
testis tissue staining FENS1 with ab125329  
at 10  $\mu$ g/ml



Western blot - Anti-FENS1 antibody (ab125329)

Anti-FENS1 antibody (ab125329) at 1  $\mu$ g/ml +  
Mouse heart lysate at 10  $\mu$ g

Gel concentration: 12%

observed band at 21kDa possible isoform  
corresponding to Q9DAD3

**Please note:** All products are "FOR RESEARCH USE ONLY AND ARE NOT INTENDED FOR DIAGNOSTIC OR THERAPEUTIC USE"

## **Our Abpromise to you: Quality guaranteed and expert technical support**

---

- Replacement or refund for products not performing as stated on the datasheet
- Valid for 12 months from date of delivery
- Response to your inquiry within 24 hours
  
- We provide support in Chinese, English, French, German, Japanese and Spanish
- Extensive multi-media technical resources to help you
- We investigate all quality concerns to ensure our products perform to the highest standards

If the product does not perform as described on this datasheet, we will offer a refund or replacement. For full details of the Abpromise, please visit <http://www.abcam.com/abpromise> or contact our technical team.

## **Terms and conditions**

---

- Guarantee only valid for products bought direct from Abcam or one of our authorized distributors