

Product datasheet

Anti-FILIP1L antibody ab122835

[2 Images](#)

Overview

Product name	Anti-FILIP1L antibody
Description	Rabbit polyclonal to FILIP1L
Host species	Rabbit
Tested applications	Suitable for: IHC-P, WB
Species reactivity	Reacts with: Mouse, Human
Immunogen	antigen sequence: DNEPPDYKSL IPLERAVING QLYEESENQD EDPNDEGSVL SFKCSQSTPC PVNRKLWIPW MKSKEGHLQN GKMQTKPNAN FVQPGDLVLS HTPGQP, corresponding to internal sequence amino acids 806-901 of Human FILIP1L. Run BLAST with ExPASy Run BLAST with NCBI
Positive control	Human colon tissue; RT 4, U 251 MG, Liver and Tonsil lysates.

Properties

Form	Liquid
Storage instructions	Shipped at 4°C. Store at -20°C or -80°C. Avoid freeze / thaw cycle. Store undiluted.
Storage buffer	pH: 7.20 Preservative: 0.02% Sodium azide Constituents: 59% PBS, 40% Glycerol
Purity	Immunogen affinity purified
Clonality	Polyclonal
Isotype	IgG

Applications

Our [Abpromise guarantee](#) covers the use of **ab122835** in the following tested applications.

The application notes include recommended starting dilutions; optimal dilutions/concentrations should be determined by the end user.

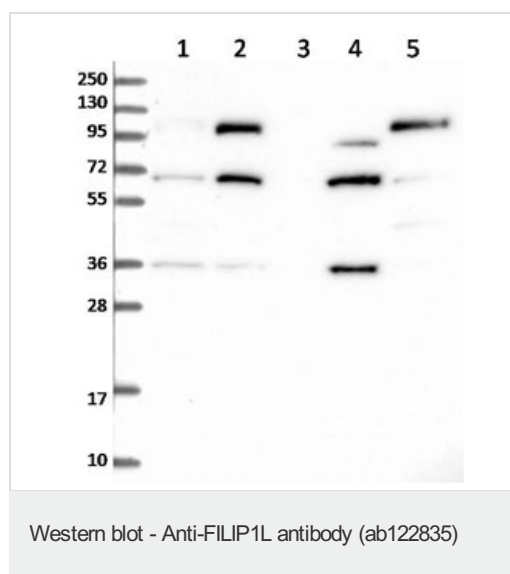
Application	Abreviews	Notes
IHC-P		1/200 - 1/500. Perform heat mediated antigen retrieval with citrate buffer pH 6 before commencing with IHC staining protocol.

Application	Abreviews	Notes
WB		1/250 - 1/500.

Target

Function	Acts as a regulator of the antiangiogenic activity on endothelial cells. When overexpressed in endothelial cells, leads to inhibition of cell proliferation and migration and an increase in apoptosis. Inhibits melanoma growth When expressed in tumor-associated vasculature.
Tissue specificity	Expressed in endothelial cells, colon and colon cancers. In the colon, expressed in the vasculature and muscularis mucosa. In colon cancer, strongly expressed in tumor stroma and the vasculature (at protein level). Expressed in ovarian epithelial cells. Down-regulated in ovarian cancer.
Sequence similarities	Belongs to the FILIP1 family.
Cellular localization	Cytoplasm. Membrane. Nucleus.

Images



All lanes : Anti-FILIP1L antibody (ab122835)
at 1/250 dilution

Lane 1 : RT 4 lysate

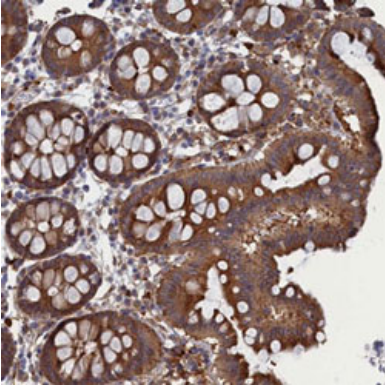
Lane 2 : U 251 MG lysate

Lane 3 : Human Plasma lysate

Lane 4 : Human liver lysate

Lane 5 : Human tonsil lysate

Developed using the ECL technique.



ab122835 at 1/200 dilution staining FILIP1L in Paraffin-embedded Human colon tissue by Immunohistochemistry.

Immunohistochemistry (Formalin/PFA-fixed paraffin-embedded sections) - Anti-FILIP1L antibody (ab122835)

Please note: All products are "FOR RESEARCH USE ONLY AND ARE NOT INTENDED FOR DIAGNOSTIC OR THERAPEUTIC USE"

Our Abpromise to you: Quality guaranteed and expert technical support

- Replacement or refund for products not performing as stated on the datasheet
- Valid for 12 months from date of delivery
- Response to your inquiry within 24 hours
- We provide support in Chinese, English, French, German, Japanese and Spanish
- Extensive multi-media technical resources to help you
- We investigate all quality concerns to ensure our products perform to the highest standards

If the product does not perform as described on this datasheet, we will offer a refund or replacement. For full details of the Abpromise, please visit <http://www.abcam.com/abpromise> or contact our technical team.

Terms and conditions

- Guarantee only valid for products bought direct from Abcam or one of our authorized distributors