


Product datasheet

Anti-FOXE1 antibody ab70607

1 Image

Overview

<b>Product name</b>	Anti-FOXE1 antibody
<b>Description</b>	Rabbit polyclonal to FOXE1
<b>Host species</b>	Rabbit
<b>Tested applications</b>	<b>Suitable for:</b> WB
<b>Species reactivity</b>	<b>Reacts with:</b> Human <b>Predicted to work with:</b> Mouse 
<b>Immunogen</b>	Synthetic peptide conjugated to KLH derived from within residues 350 to the C-terminus of Human FOXE1. Read Abcam's proprietary immunogen policy (Peptide available as <a href="#">ab94826</a> .)
<b>Positive control</b>	This antibody gave a positive signal in HeLa whole cell lysate.

Properties

<b>Form</b>	Liquid
<b>Storage instructions</b>	Shipped at 4°C. Store at +4°C short term (1-2 weeks). Upon delivery aliquot. Store at -20°C or -80°C. Avoid freeze / thaw cycle.
<b>Storage buffer</b>	Preservative: 0.02% Sodium Azide Constituents: 1% BSA, PBS, pH 7.4
<b>Purity</b>	Immunogen affinity purified
<b>Clonality</b>	Polyclonal
<b>Isotype</b>	IgG

Applications

Our [Abpromise guarantee](#) covers the use of **ab70607** in the following tested applications.

The application notes include recommended starting dilutions; optimal dilutions/concentrations should be determined by the end user.

Application	Abreviews	Notes
-------------	-----------	-------

WB

<b>Application notes</b>	WB: Use at a concentration of 1 µg/ml. Detects a band of approximately 42 kDa (predicted)
--------------------------	---

molecular weight: 38 kDa).

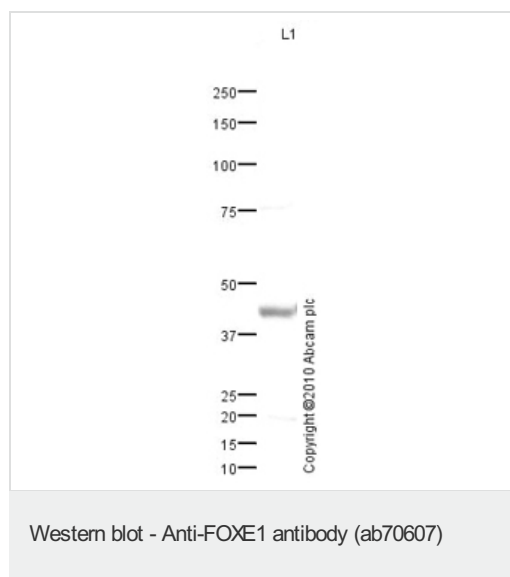
Not yet tested in other applications.

Optimal dilutions/concentrations should be determined by the end user.

## Target

<b>Function</b>	Probable transcription factor. Could be involved in thyroid gland organogenesis.
<b>Tissue specificity</b>	Detected in adult brain, placenta, lung, liver, skeletal muscle, kidney, pancreas, heart, colon, small intestine testis and thymus. Expression was strongest in heart and pancreas.
<b>Involvement in disease</b>	Defects in FOXE1 are the cause of Bamforth-Lazarus syndrome (BLS) [MIM:241850]. BLS is associated with thyroid agenesis, cleft palate and choanal atresia.
<b>Sequence similarities</b>	Contains 1 fork-head DNA-binding domain.
<b>Post-translational modifications</b>	Phosphorylated.
<b>Cellular localization</b>	Nucleus.

## Images



Anti-FOXE1 antibody (ab70607) at 1 µg/ml +  
HeLa (Human epithelial carcinoma cell line)  
Whole Cell Lysate at 10 µg

### Secondary

Goat polyclonal to Rabbit IgG - H&L - Pre-Adsorbed (HRP) at 1/3000 dilution

Developed using the ECL technique.

Performed under reducing conditions.

**Predicted band size:** 38 kDa

**Observed band size:** 42 kDa

**Exposure time:** 15 minutes

**Please note:** All products are "FOR RESEARCH USE ONLY AND ARE NOT INTENDED FOR DIAGNOSTIC OR THERAPEUTIC USE"

## Our Abpromise to you: Quality guaranteed and expert technical support

- Replacement or refund for products not performing as stated on the datasheet
- Valid for 12 months from date of delivery
- Response to your inquiry within 24 hours

- We provide support in Chinese, English, French, German, Japanese and Spanish
- Extensive multi-media technical resources to help you
- We investigate all quality concerns to ensure our products perform to the highest standards

If the product does not perform as described on this datasheet, we will offer a refund or replacement. For full details of the Abpromise, please visit <http://www.abcam.com/abpromise> or contact our technical team.

### **Terms and conditions**

---

- Guarantee only valid for products bought direct from Abcam or one of our authorized distributors