

Product datasheet

Anti-FOXP3 antibody [mAbcam 450] ab450

★★★★★ 2 Abreviews 13 References 3 Images

Overview

Product name	Anti-FOXP3 antibody [mAbcam 450]
Description	Mouse monoclonal [mAbcam 450] to FOXP3
Host species	Mouse
Specificity	Detects a single clean band on human FOXP3 transfected 293 cells. When used in immunocytochemistry on acetone fixed FOXP protein transfected COS cells the antibody only detects FOXP3 and not FOXP1, FOXP2 or FOXP4.
Tested applications	Suitable for: IP, IHC-P, ICC/IF, WB
Species reactivity	Reacts with: Human
Immunogen	Synthetic peptide corresponding to Human FOXP3 aa 400 to the C-terminus conjugated to Keyhole Limpet Haemocyanin (KLH). Database link: Q9BZS1 (Peptide available as ab16809)
General notes	This antibody clone is manufactured by Abcam. If you require this antibody in a particular buffer formulation or a particular conjugate for your experiments, please contact orders@abcam.com or you can find further information here .

Properties

Form	Liquid
Storage instructions	Shipped at 4°C. Store at +4°C short term (1-2 weeks). Upon delivery aliquot. Store at -20°C or -80°C. Avoid freeze / thaw cycle.
Storage buffer	pH: 7.40 Preservative: 0.02% Sodium azide Constituents: PBS, 6.97% L-Arginine
Purity	IgG fraction
Clonality	Monoclonal
Clone number	mAbcam 450
Myeloma	Sp2/0-Ag14
Isotype	IgG3
Light chain type	kappa

Applications

Our [Abpromise guarantee](#) covers the use of **ab450** in the following tested applications.

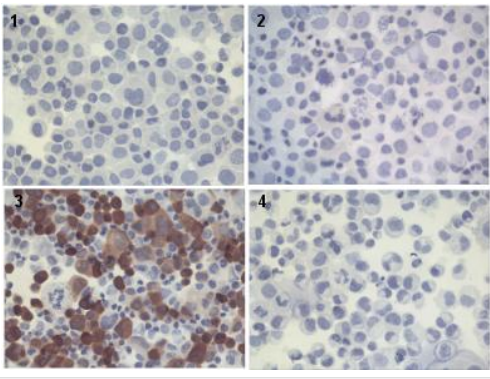
The application notes include recommended starting dilutions; optimal dilutions/concentrations should be determined by the end user.

Application	Abreviews	Notes
IP	★★★★☆	Use at an assay dependent dilution. Used at 2 µg/ml on human FOXP3 transfected COS cells (see Abreview for further information).
IHC-P	★★★★★	1/50. This clone has been tested against FOXP3 transfectants of COS-1 cells fixed with acetone and also works against formalin-fixed paraffin-embedded FOXP3 transfectants heat retrieved with pH9 Tris-EDTA buffer. It did not show positive staining with cryostat or paraffin-embedded human tonsil.
ICC/IF		Use at an assay dependent dilution.
WB		Use a concentration of 1 µg/ml. Detects a band of approximately 48 kDa (predicted molecular weight: 48 kDa). Can be blocked with Human FOXP3 peptide (ab16809) .

Target

Function	Probable transcription factor. Plays a critical role in the control of immune response.
Involvement in disease	Defects in FOXP3 are the cause of immunodeficiency polyendocrinopathy, enteropathy, X-linked syndrome (IPEX) [MIM:304790]; also known as X-linked autoimmunity-immunodeficiency syndrome. IPEX is characterized by neonatal onset insulin-dependent diabetes mellitus, infections, secretory diarrhea, trombocytopenia, anemia and eczema. It is usually lethal in infancy.
Sequence similarities	Contains 1 C2H2-type zinc finger. Contains 1 fork-head DNA-binding domain.
Cellular localization	Nucleus.

Images



Immunocytochemistry - Anti-FOXP3 antibody

[mAbcam 450] (ab450)

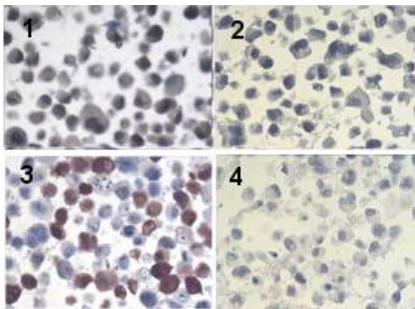
This image is courtesy of Alison Banham and Bridget Fox, University of Oxford

Clone mAbcam 450 used in immunocytochemistry on transfected COS-1 cytopins fixed with acetone for 10 mins.

- 1: FOXP1 transfectant
- 2: FOXP2 transfectant
- 3: FOXP3 transfectant
- 4: FOXP4 transfectant

Staining can be seen on the FOXP3 transfectant, but no staining is seen with the other FOXP protein transfectants, confirming the specificity of this antibody in immunocytochemistry.

These images were produced with neat supernatant produced with this clone (the stock of this antibody is purified from supernatant).



Immunocytochemistry - Anti-FOXP3 antibody

[mAbcam 450] (ab450)

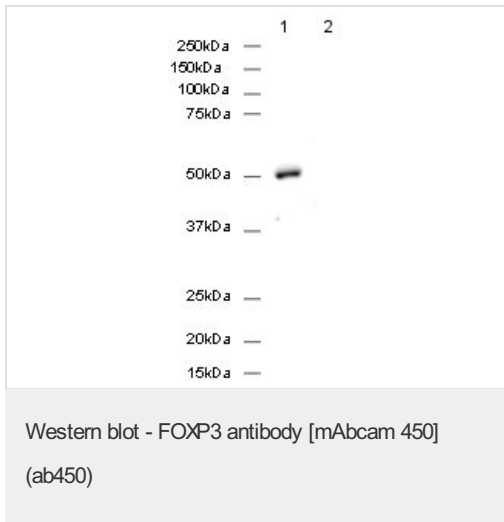
This image is courtesy of Alison Banham and Bridget Fox, University of Oxford

Clone mAbcam 450 used in immunocytochemistry on paraffin embedded transfected COS-1 cytopins.

- 1: FOXP1 transfectant
- 2: FOXP2 transfectant
- 3: FOXP3 transfectant
- 4: FOXP4 transfectant

Strong staining can be seen on the FOXP3 transfectant, with very weak staining on the FOXP1 transfectant and no staining is seen with the other FOXP protein transfectants. This shows that the antibody is largely specific for FOXP3 when used with paraffin embedded cells.

These images were produced with neat supernatant produced with this clone (the stock of this antibody is purified from supernatant).



Please note: All products are "FOR RESEARCH USE ONLY AND ARE NOT INTENDED FOR DIAGNOSTIC OR THERAPEUTIC USE"

Our Abpromise to you: Quality guaranteed and expert technical support

- Replacement or refund for products not performing as stated on the datasheet
- Valid for 12 months from date of delivery
- Response to your inquiry within 24 hours
- We provide support in Chinese, English, French, German, Japanese and Spanish
- Extensive multi-media technical resources to help you
- We investigate all quality concerns to ensure our products perform to the highest standards

If the product does not perform as described on this datasheet, we will offer a refund or replacement. For full details of the Abpromise, please visit <http://www.abcam.com/abpromise> or contact our technical team.

Terms and conditions

- Guarantee only valid for products bought direct from Abcam or one of our authorized distributors