

## Product datasheet

# Anti-FXYD1 antibody [41AT858.235] ab38685

★ ★ ★ ☆ ☆ 1 Abreviews 1 Image

### Overview

<b>Product name</b>	Anti-FXYD1 antibody [41AT858.235]
<b>Description</b>	Mouse monoclonal [41AT858.235] to FXYD1
<b>Host species</b>	Mouse
<b>Tested applications</b>	<b>Suitable for:</b> ELISA, WB
<b>Species reactivity</b>	<b>Reacts with:</b> Mouse
<b>Immunogen</b>	KLH-conjugated synthetic phosphopeptide corresponding to amino acid residues surrounding S68 of mouse PLM.

### Properties

<b>Form</b>	Liquid
<b>Storage instructions</b>	Shipped at 4°C. Store at +4°C short term (1-2 weeks). Upon delivery aliquot. Store at -20°C long term.
<b>Storage buffer</b>	Preservative: 0.09% Sodium Azide Constituents: PBS
<b>Purity</b>	Protein G purified
<b>Purification notes</b>	This antibody is purified through a protein G column, eluted with high and low pH buffers and neutralized immediately, followed by dialysis against PBS.
<b>Clonality</b>	Monoclonal
<b>Clone number</b>	41AT858.235
<b>Isotype</b>	IgG1

### Applications

Our [Abpromise guarantee](#) covers the use of **ab38685** in the following tested applications.

The application notes include recommended starting dilutions; optimal dilutions/concentrations should be determined by the end user.

Application	Abreviews	Notes
ELISA		1/1000.

Application	Abreviews	Notes
WB	★★★★☆	1/100 - 1/500. Predicted molecular weight: 10 kDa.

## Target

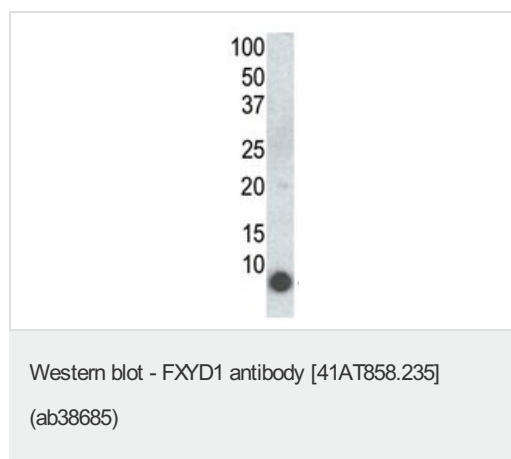
### Relevance

PLM (FXYP1) is a member of a family of small membrane proteins that share a 35-amino acid signature sequence domain, beginning with the sequence PFXYP and containing 7 invariant and 6 highly conserved amino acids. FXYP2, also known as the gamma subunit of the Na,K-ATPase, regulates the properties of that enzyme. FXYP1 (phospholemman), FXYP2 (gamma), FXYP3 (MAT-8), FXYP4 (CHIF), and FXYP5 (RIC) have been shown to induce channel activity in experimental expression systems. PLM may be phosphorylated by several kinases, including protein kinase A, protein kinase C, NIMA kinase, and myotonic dystrophy kinase. It is thought to form an ion channel or regulate ion channel activity.

### Cellular localization

Membrane; single-pass type I membrane protein

## Images



Anti-FXYP1 antibody [41AT858.235] (ab38685) at 1/100 dilution + 293 cells transfected with a plasmid encoding PLM.

**Predicted band size:** 10 kDa

**Please note:** All products are "FOR RESEARCH USE ONLY AND ARE NOT INTENDED FOR DIAGNOSTIC OR THERAPEUTIC USE"

## Our Abpromise to you: Quality guaranteed and expert technical support

- Replacement or refund for products not performing as stated on the datasheet
- Valid for 12 months from date of delivery
- Response to your inquiry within 24 hours
- We provide support in Chinese, English, French, German, Japanese and Spanish
- Extensive multi-media technical resources to help you
- We investigate all quality concerns to ensure our products perform to the highest standards

If the product does not perform as described on this datasheet, we will offer a refund or replacement. For full details of the Abpromise, please visit <http://www.abcam.com/abpromise> or contact our technical team.

## Terms and conditions

---

- Guarantee only valid for products bought direct from Abcam or one of our authorized distributors