

## Product datasheet

# Anti-G protein alpha Inhibitor 2 antibody ab20392

★★★★☆ 1 Abreviews 4 References 1 Image

### Overview

<b>Product name</b>	Anti-G protein alpha Inhibitor 2 antibody
<b>Description</b>	Rabbit polyclonal to G protein alpha Inhibitor 2
<b>Host species</b>	Rabbit
<b>Tested applications</b>	<b>Suitable for:</b> WB, IP, ICC/IF
<b>Species reactivity</b>	<b>Reacts with:</b> Rat, Human
<b>Immunogen</b>	Other Immunogen Type corresponding to Human G protein alpha Inhibitor 2.

### Properties

<b>Form</b>	Liquid
<b>Storage instructions</b>	Shipped at 4°C. Upon delivery aliquot and store at -20°C. Avoid freeze / thaw cycles.
<b>Storage buffer</b>	Preservative: 0.02% Sodium Azide Constituents: 50% Glycerol, 1% BSA, PBS, pH 7.2
<b>Purity</b>	Protein A purified
<b>Clonality</b>	Polyclonal
<b>Isotype</b>	IgG

### Applications

Our [Abpromise guarantee](#) covers the use of **ab20392** in the following tested applications.

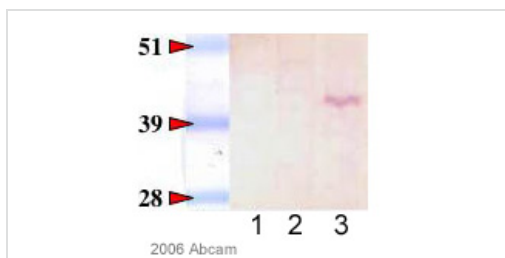
The application notes include recommended starting dilutions; optimal dilutions/concentrations should be determined by the end user.

Application	Abreviews	Notes
WB	★★★★☆	Use a concentration of 0.5 - 1 µg/ml. Predicted molecular weight: 40 kDa.
IP		Use at an assay dependent dilution.
ICC/IF		Use at an assay dependent dilution.

Target

<b>Function</b>	Guanine nucleotide-binding proteins (G proteins) are involved as modulators or transducers in various transmembrane signaling systems. The G(i) proteins are involved in hormonal regulation of adenylate cyclase: they inhibit the cyclase in response to beta-adrenergic stimuli. May play a role in cell division.
<b>Sequence similarities</b>	Belongs to the G-alpha family. G(i/o/t/z) subfamily.
<b>Cellular localization</b>	Cytoplasm. Cytoplasm > cytoskeleton > centrosome. Cell membrane. Localizes in the centrosomes of interphase and mitotic cells. Detected at the cleavage furrow and/or the midbody.

## Images



Western blot - Anti-G protein alpha Inhibitor 2 antibody (ab20392)

This image is courtesy of an anonymous Abreview

**Lanes 1 & 3** : Anti-G protein alpha Inhibitor 2 antibody (ab20392) at 1/1000 dilution

**Lane 2** : No primary

**All lanes** : Rat RH7777 whole cell lysate

Lysates/proteins at 15 µg per lane.

### Secondary

**Lane 1** : No secondary

**Lanes 2-3** : Alkaline phosphatase conjugated goat anti-rabbit

Performed under reducing conditions.

**Predicted band size:** 40 kDa

**Observed band size:** 40 kDa

**Exposure time:** 10 minutes

**Please note:** All products are "FOR RESEARCH USE ONLY AND ARE NOT INTENDED FOR DIAGNOSTIC OR THERAPEUTIC USE"

## Our Abpromise to you: Quality guaranteed and expert technical support

- Replacement or refund for products not performing as stated on the datasheet
- Valid for 12 months from date of delivery
- Response to your inquiry within 24 hours
- We provide support in Chinese, English, French, German, Japanese and Spanish
- Extensive multi-media technical resources to help you
- We investigate all quality concerns to ensure our products perform to the highest standards

If the product does not perform as described on this datasheet, we will offer a refund or replacement. For full details of the Abpromise, please visit <http://www.abcam.com/abpromise> or contact our technical team.

## Terms and conditions

---

- Guarantee only valid for products bought direct from Abcam or one of our authorized distributors