

## Product datasheet

# Anti-G protein beta 4 antibody ab106599

[2 Images](#)

### Overview

<b>Product name</b>	Anti-G protein beta 4 antibody
<b>Description</b>	Rabbit polyclonal to G protein beta 4
<b>Host species</b>	Rabbit
<b>Tested applications</b>	<b>Suitable for:</b> WB
<b>Species reactivity</b>	<b>Reacts with:</b> Human <b>Predicted to work with:</b> Mouse, Rat, Rabbit, Horse, Chicken, Guinea pig, Cow, Cat, Dog, Zebrafish
<b>Immunogen</b>	Synthetic peptide corresponding to a region within internal sequence amino acids 215-264 (DGMCRQSFTG HVSDINAVSF FPNGYAFATG SDDATCRLFD LRADQELLY) of Human G protein beta 4 (NP_067642). <a href="#">Run BLAST with ExPASy</a> <a href="#">Run BLAST with NCBI</a>
<b>Positive control</b>	HCT15 cell lysate

### Properties

<b>Form</b>	Liquid
<b>Storage instructions</b>	Shipped at 4°C. Upon delivery aliquot and store at -20°C. Avoid repeated freeze / thaw cycles.
<b>Storage buffer</b>	Preservative: None Constituents: 2% Sucrose, PBS
<b>Purity</b>	Immunogen affinity purified
<b>Clonality</b>	Polyclonal
<b>Isotype</b>	IgG

### Applications

Our [Abpromise guarantee](#) covers the use of **ab106599** in the following tested applications.

The application notes include recommended starting dilutions; optimal dilutions/concentrations should be determined by the end user.

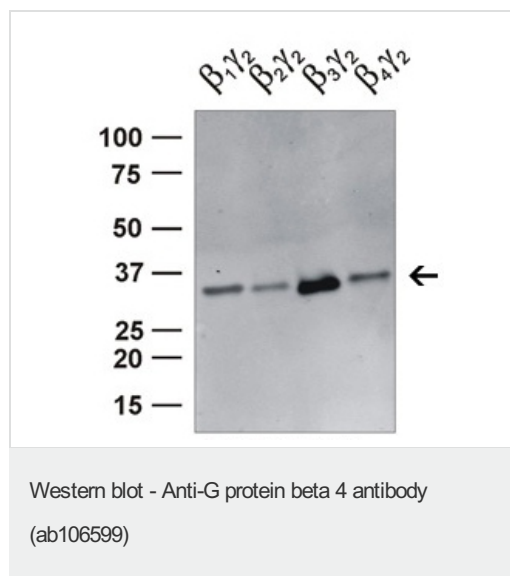
Application	Abreviews	Notes
-------------	-----------	-------

Application	Abreviews	Notes
WB		Use a concentration of 1 µg/ml. Predicted molecular weight: 38 kDa. Good results were obtained when blocked with 5% non-fat dry milk in 0.05% PBS-T.

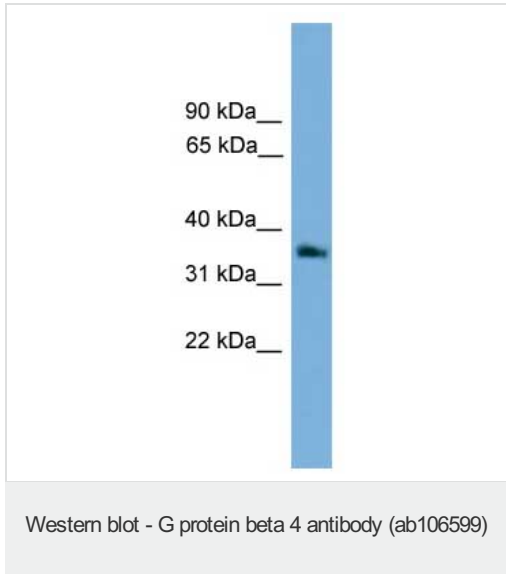
## Target

<b>Function</b>	Guanine nucleotide-binding proteins (G proteins) are involved as a modulator or transducer in various transmembrane signaling systems. The beta and gamma chains are required for the GTPase activity, for replacement of GDP by GTP, and for G protein-effector interaction.
<b>Tissue specificity</b>	Strongly expressed in lung and placenta, whereas it is weakly expressed in brain and heart.
<b>Sequence similarities</b>	Belongs to the WD repeat G protein beta family. Contains 7 WD repeats.

## Images



Western blot analysis of HEK293 cell lysate labeling G protein beta 4 with ab106599.



Anti-G protein beta 4 antibody (ab106599) at  
1 µg/ml + HCT15 cell lysate at 10 µg

**Predicted band size:** 38 kDa

Gel concentration: 12%

**Please note:** All products are "FOR RESEARCH USE ONLY AND ARE NOT INTENDED FOR DIAGNOSTIC OR THERAPEUTIC USE"

### Our Abpromise to you: Quality guaranteed and expert technical support

- Replacement or refund for products not performing as stated on the datasheet
- Valid for 12 months from date of delivery
- Response to your inquiry within 24 hours
- We provide support in Chinese, English, French, German, Japanese and Spanish
- Extensive multi-media technical resources to help you
- We investigate all quality concerns to ensure our products perform to the highest standards

If the product does not perform as described on this datasheet, we will offer a refund or replacement. For full details of the Abpromise, please visit <http://www.abcam.com/abpromise> or contact our technical team.

### Terms and conditions

- Guarantee only valid for products bought direct from Abcam or one of our authorized distributors