


Product datasheet

Anti-GAB1 (phospho Y627) antibody ab12863

1 References 1 Image

Overview

|                            |   |
|----------------------------|---|
| <b>Product name</b>        | Anti-GAB1 (phospho Y627) antibody   |
| <b>Description</b>         | Rabbit polyclonal to GAB1 (phospho Y627)  |
| <b>Host species</b>        | Rabbit  |
| <b>Specificity</b>         | Does not cross react with Gab1 at tyrosines 242, 437, 472 or 476.   |
| <b>Tested applications</b> | <b>Suitable for:</b> WB   |
| <b>Species reactivity</b>  | <b>Reacts with:</b> Mouse<br><b>Predicted to work with:</b> Human  |
| <b>Immunogen</b>           | Synthetic peptide (Human).  |
| <b>Positive control</b>    | NIH3T3 cells +/- PDGF.  |

Properties

|                             |  |
|-----------------------------|--|
| <b>Form</b>                 | Liquid   |
| <b>Storage instructions</b> | Shipped at 4°C. Upon delivery aliquot and store at -20°C. Avoid freeze / thaw cycles.                        |
| <b>Storage buffer</b>       | Preservative: 0.05% Sodium Azide<br>Constituents: Dulbecco's PBS (without Mg2+ and Ca2+), 1mg/ml BSA. pH 7.3 |
| <b>Purity</b>               | Immunogen affinity purified  |
| <b>Clonality</b>            | Polyclonal   |
| <b>Isotype</b>              | IgG  |

Applications

Our [Abpromise guarantee](#) covers the use of **ab12863** in the following tested applications.

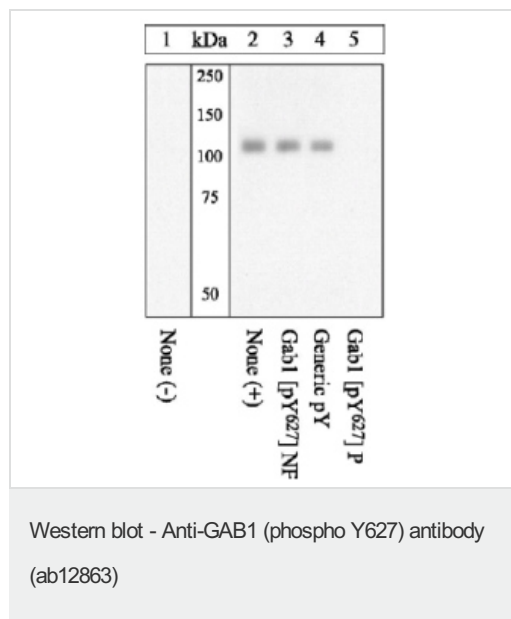
The application notes include recommended starting dilutions; optimal dilutions/concentrations should be determined by the end user.

| Application | Abreviews | Notes  |
|-------------|-----------|--|
| WB          |           | 1/1000. Detects a band of approximately 115 kDa. |

## Target

|   |   |
|---|---|
| <b>Function</b>                         | Probably involved in EGF and insulin receptor signaling.  |
| <b>Sequence similarities</b>            | Belongs to the GAB family.<br>Contains 1 PH domain.   |
| <b>Post-translational modifications</b> | Phosphorylated on tyrosine residue(s) by the epidermal growth factor receptor (EGFR) and the insulin receptor (INSR). Tyrosine phosphorylation of GAB1 mediates interaction with several proteins that contain SH2 domains. |

## Images



### Peptide Competition

Lysates prepared from NIH3T3 cells left untreated (1) or treated with PDGF (2-5). were resolved by SDS-PAGE on a 10% polyacrylamide gel and transferred to PVDF. Membranes were blocked with a 5% BSA-TBST buffer for one hour at room temperature and incubated with ab12863 antibody for two hours at room temperature in a 3% BSA-TBST buffer, following prior incubation with: no peptide (1, 2), the non-phosphopeptide corresponding to the immunogen (3), a generic phosphotyrosine containing peptide (4), the phosphopeptide immunogen (5). After washing, membranes were incubated with goat F(ab)2 anti-rabbit IgG HRP conjugate and bands were detected using the Pierce SuperSignal method. The data show that only the peptide corresponding to ab12863 blocks the signal, verifying the specificity of the antibody. Peptide Competition Lysates prepared from NIH3T3 cells left untreated (1) or treated with PDGF (2-5). were resolved by SDS-PAGE on a 10% polyacrylamide gel and

**Please note:** All products are "FOR RESEARCH USE ONLY AND ARE NOT INTENDED FOR DIAGNOSTIC OR THERAPEUTIC USE"

## Our Abpromise to you: Quality guaranteed and expert technical support

- Replacement or refund for products not performing as stated on the datasheet
- Valid for 12 months from date of delivery
- Response to your inquiry within 24 hours
- We provide support in Chinese, English, French, German, Japanese and Spanish

- Extensive multi-media technical resources to help you
- We investigate all quality concerns to ensure our products perform to the highest standards

If the product does not perform as described on this datasheet, we will offer a refund or replacement. For full details of the Abpromise, please visit <http://www.abcam.com/abpromise> or contact our technical team.

### **Terms and conditions**

---

- Guarantee only valid for products bought direct from Abcam or one of our authorized distributors