

## Product datasheet

# Anti-GABARAP antibody ab1398

★★★★★ 1 Abreviews 2 References 1 Image

### Overview

<b>Product name</b>	Anti-GABARAP antibody
<b>Description</b>	Rabbit polyclonal to GABARAP
<b>Specificity</b>	This antibody recognizes human GABARAP (14 kD).
<b>Tested applications</b>	<b>Suitable for:</b> ELISA, WB
<b>Species reactivity</b>	<b>Reacts with:</b> Mouse, Human
<b>Immunogen</b>	Synthetic peptide: RSEGEKIRKKYPDRVPV , corresponding to amino acids 15-31 of Human GABARAP.
	<a href="#">Run BLAST with</a> <a href="#">Run BLAST with</a>

### Properties

<b>Form</b>	Liquid
<b>Storage instructions</b>	Shipped at 4°C. Upon delivery aliquot and store at -20°C or -80°C. Avoid repeated freeze / thaw cycles.
<b>Storage buffer</b>	PBS with 0.02% sodium azide
<b>Purity</b>	IgG fraction
<b>Clonality</b>	Polyclonal
<b>Isotype</b>	IgG

### Applications

Our [Abpromise guarantee](#) covers the use of **ab1398** in the following tested applications.

The application notes include recommended starting dilutions; optimal dilutions/concentrations should be determined by the end user.

Application	Abreviews	Notes
ELISA		
WB	★★★★★	

## Application notes

Western Blot: use at 1:500-1:1,000 dilution.  
ELISA: use at 1:1,000-1:5,000 dilution

## Target

### Function

Ubiquitin-like modifier that plays a role in intracellular transport of GABA(A) receptors and its interaction with the cytoskeleton. Involved in apoptosis. Involved in autophagy. Whereas LC3s are involved in elongation of the phagophore membrane, the GABARAP/GATE-16 subfamily is essential for a later stage in autophagosome maturation.

### Tissue specificity

Heart, brain, placenta, liver, skeletal muscle, kidney and pancreas.

### Sequence similarities

Belongs to the ATG8 family.

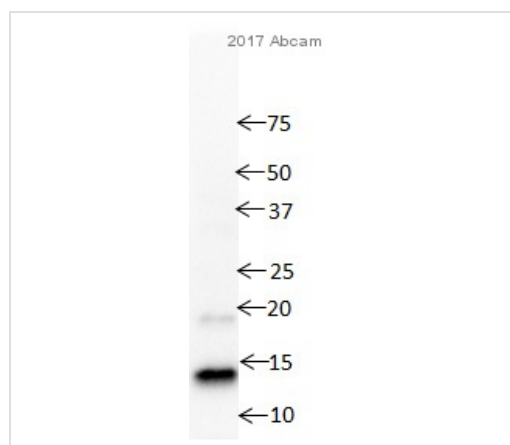
### Post-translational modifications

The precursor molecule is cleaved by ATG4B to form the cytosolic form, GABARAP-I. This is activated by APG7L/ATG7, transferred to ATG3 and conjugated to phospholipid to form the membrane-bound form, GABARAP-II.

### Cellular localization

Endomembrane system. Cytoplasm, cytoskeleton. Golgi apparatus membrane. Cytoplasmic vesicle, autophagosome. Largely associated with intracellular membrane structures including the Golgi apparatus and postsynaptic cisternae. Colocalizes with microtubules (By similarity). Localizes also to discrete punctae along the ciliary axoneme (By similarity).

## Images



Western blot - Anti-GABARAP antibody (ab1398)

Anti-GABARAP antibody (ab1398) at 1 µg/ml  
+ Macrophage whole cell lysate at 80 µg

### Secondary

Goat Anti-Rabbit IgG H&L (HRP) (ab97051) at  
1/5000 dilution

Developed using the ECL technique

**Observed band size** : 14 kDa

**Exposure time** : 30 seconds

**Please note:** All products are "FOR RESEARCH USE ONLY AND ARE NOT INTENDED FOR DIAGNOSTIC OR THERAPEUTIC USE"

## Our Abpromise to you: Quality guaranteed and expert technical support

- Replacement or refund for products not performing as stated on the datasheet
- Valid for 12 months from date of delivery
- Response to your inquiry within 24 hours
- We provide support in Chinese, English, French, German, Japanese and Spanish
- Extensive multi-media technical resources to help you

- We investigate all quality concerns to ensure our products perform to the highest standards

If the product does not perform as described on this datasheet, we will offer a refund or replacement. For full details of the Abpromise, please visit <http://www.abcam.com/abpromise> or contact our technical team.

### **Terms and conditions**

---

- Guarantee only valid for products bought direct from Abcam or one of our authorized distributors