

## Product datasheet

# Anti-GCLC antibody ab55435

[3 References](#) [3 Images](#)

### Overview

<b>Product name</b>	Anti-GCLC antibody
<b>Description</b>	Mouse monoclonal to GCLC
<b>Tested applications</b>	<b>Suitable for:</b> WB, ICC/IF, Flow Cyt
<b>Species reactivity</b>	<b>Reacts with:</b> Rat, Human
<b>Immunogen</b>	Recombinant fragment, corresponding to amino acids 528-638 of Human GCLC.

### Properties

<b>Form</b>	Liquid
<b>Storage instructions</b>	Shipped at 4°C. Upon delivery aliquot and store at -20°C or -80°C. Avoid repeated freeze / thaw cycles.
<b>Storage buffer</b>	Preservative: None PBS, pH 7.2
<b>Purity</b>	Protein G purified
<b>Clonality</b>	Monoclonal
<b>Isotype</b>	IgG1
<b>Light chain type</b>	kappa

### Applications

Our [Abpromise guarantee](#) covers the use of **ab55435** in the following tested applications.

The application notes include recommended starting dilutions; optimal dilutions/concentrations should be determined by the end user.

Application	Abreviews	Notes
WB		Use a concentration of 1 - 5 µg/ml. Predicted molecular weight: 73 kDa.
ICC/IF		Use a concentration of 10 µg/ml.
Flow Cyt		Use 1µg for 10 <sup>6</sup> cells. <a href="#">ab170190</a> -Mouse monoclonal IgG1, is suitable for use as an isotype control with this antibody.

## Target

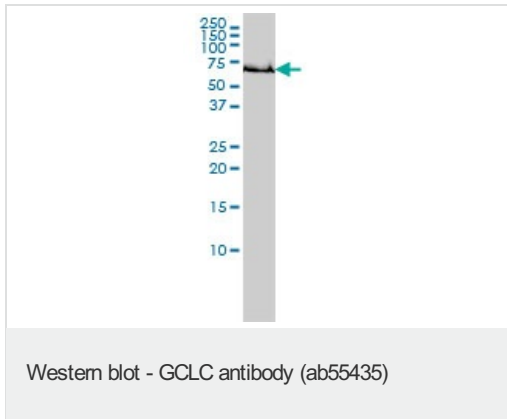
---

<b>Pathway</b>	Sulfur metabolism; glutathione biosynthesis; glutathione from L-cysteine and L-glutamate: step 1/2.
<b>Involvement in disease</b>	Defects in GCLC are the cause of hemolytic anemia (HAGGSD) [MIM:230450].
<b>Sequence similarities</b>	Belongs to the glutamate–cysteine ligase type 3 family.

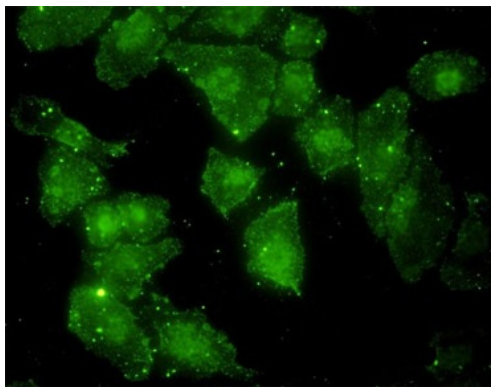
---

## Anti-GCLC antibody images

---

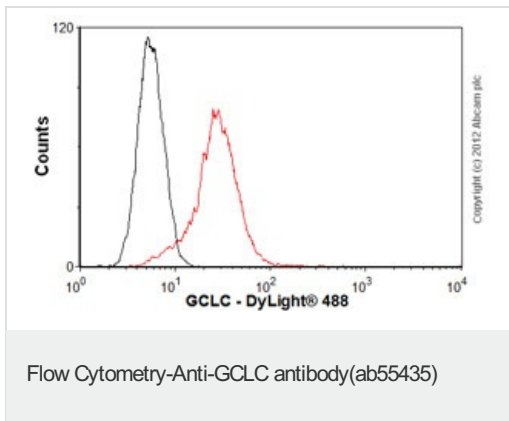


**Predicted band size : 73 kDa**



ab55435 at 10 ug/ml staining GCLC in human Hella cells by Immunocytochemistry/ Immunofluorescence.

Immunocytochemistry/ Immunofluorescence-GCLC antibody(ab55435)



Overlay histogram showing Jurkat cells stained with ab55435 (red line). The cells were fixed with 4% paraformaldehyde (10 min) and then permeabilized with 0.1% PBS-Tween for 20 min. The cells were then incubated in 1x PBS / 10% normal goat serum / 0.3M glycine to block non-specific protein-protein interactions followed by the antibody (ab55435, 1µg/1x10<sup>6</sup> cells) for 30 min at 22°C. The secondary antibody used was DyLight® 488 goat anti-mouse IgG (H+L) (ab96879) at 1/500 dilution for 30 min at 22°C. Isotype control antibody (black line) was mouse IgG1 [ICIGG1] (ab91353, 2µg/1x10<sup>6</sup> cells) used under the same conditions. Acquisition of >5,000 events was performed.

**Please note:** All products are "FOR RESEARCH USE ONLY AND ARE NOT INTENDED FOR DIAGNOSTIC OR THERAPEUTIC USE"

### Our Abpromise to you: Quality guaranteed and expert technical support

- Replacement or refund for products not performing as stated on the datasheet
- Valid for 12 months from date of delivery
- Response to your inquiry within 24 hours
- We provide support in Chinese, English, French, German, Japanese and Spanish
- Extensive multi-media technical resources to help you
- We investigate all quality concerns to ensure our products perform to the highest standards

If the product does not perform as described on this datasheet, we will offer a refund or replacement. For full details of the Abpromise, please visit <http://www.abcam.com/abpromise> or contact our technical team.

### Terms and conditions

- Guarantee only valid for products bought direct from Abcam or one of our authorized distributors