


Product datasheet

Anti-GDF15 antibody ab105738

1 Image

Overview

Product name	Anti-GDF15 antibody
Description	Rabbit polyclonal to GDF15
Host species	Rabbit
Tested applications	Suitable for: WB, Sandwich ELISA
Species reactivity	Reacts with: Mouse, Human Predicted to work with: Rat, Cow, Dog, Pig 
Immunogen	Synthetic peptide corresponding to amino acids near the C-terminal of Mouse GDF15.
Positive control	Recombinant MBP-GDF15 fusion protein; Yeast cell lysate expressing SUMO-mouse GDF15; Human GDF15 monomer.
General notes	Expiration date is one (1) year from date of opening product.

Properties

Form	Liquid
Storage instructions	Shipped at 4°C. Store at +4°C short term (1-2 weeks). Upon delivery aliquot. Store at -20°C or -80°C. Avoid freeze / thaw cycle.
Storage buffer	pH: 7.20 Preservative: 0.01% Sodium azide Constituents: 0.42% Potassium phosphate, 0.88% Sodium chloride
Purity	Protein A purified
Purification notes	ab105738 is affinity purified from monospecific antiserum by immunoaffinity chromatography.
Clonality	Polyclonal
Isotype	IgG

Applications

Our [Abpromise guarantee](#) covers the use of **ab105738** in the following tested applications.

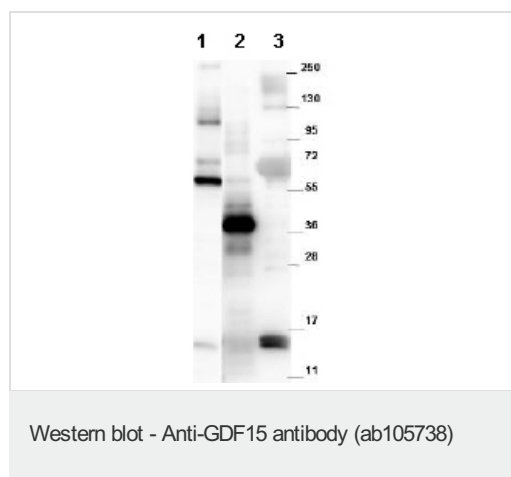
The application notes include recommended starting dilutions; optimal dilutions/concentrations should be determined by the end user.

Application	Abreviews	Notes
WB		1/3000 - 1/7000. Predicted molecular weight: 33 kDa.
Sandwich ELISA		1/100000 - 1/120000.

Target

Tissue specificity	Highly expressed in placenta, with lower levels in prostate and colon and some expression in kidney.
Sequence similarities	Belongs to the TGF-beta family.
Cellular localization	Secreted.

Images



All lanes : Anti-GDF15 antibody (ab105738) at 1/1000 dilution

Lane 1 : Recombinant MBP-GDF15 fusion protein purified from E.coli

Lane 2 : Yeast cell lysate expressing SUMO-Mouse GDF15

Lane 3 : Human GDF15 monomer purified from CHO-K1 cells

Secondary

All lanes : Goat-anti-Rabbit HRP at 1/40000 dilution

Performed under reducing conditions.

Predicted band size: 33 kDa

Expect bands in Western blots of approximately 14 and 28 kDa in size corresponding to GDF15 monomer and dimer, respectively.

Please note: All products are "FOR RESEARCH USE ONLY AND ARE NOT INTENDED FOR DIAGNOSTIC OR THERAPEUTIC USE"

Our Abpromise to you: Quality guaranteed and expert technical support

- Replacement or refund for products not performing as stated on the datasheet
- Valid for 12 months from date of delivery
- Response to your inquiry within 24 hours

- We provide support in Chinese, English, French, German, Japanese and Spanish
- Extensive multi-media technical resources to help you
- We investigate all quality concerns to ensure our products perform to the highest standards

If the product does not perform as described on this datasheet, we will offer a refund or replacement. For full details of the Abpromise, please visit <http://www.abcam.com/abpromise> or contact our technical team.

Terms and conditions

- Guarantee only valid for products bought direct from Abcam or one of our authorized distributors