


Product datasheet

Anti-GLO1 antibody ab96032

★★★★★ 3 Abreviews 7 References 3 Images

Overview

Product name	Anti-GLO1 antibody
Description	Rabbit polyclonal to GLO1
Host species	Rabbit
Tested applications	Suitable for: WB, IHC-P, ICC/IF
Species reactivity	Reacts with: Rat, Human Predicted to work with: Mouse, Cow 
Immunogen	Recombinant protein fragment corresponding to a region within amino acids 1 and 171 of GLO1 (NP_006699).
Positive control	WB: 293T, A431, H1299, HeLaS3, HepG2, MOLT and Raji cell lysates IHC-P: ovarian carcinoma tissue ICC/IF: HeLa cells

Properties

Form	Liquid
Storage instructions	Shipped at 4°C. Upon delivery aliquot and store at -20°C or -80°C. Avoid repeated freeze / thaw cycles.
Storage buffer	Preservative: 0.01% Thimerosal (merthiolate) Constituents: 10% Glycerol, 0.1M Tris, 0.1M Glycine, pH 7
Purity	Immunogen affinity purified
Clonality	Polyclonal
Isotype	IgG

Applications

Our [Abpromise guarantee](#) covers the use of **ab96032** in the following tested applications.

The application notes include recommended starting dilutions; optimal dilutions/concentrations should be determined by the end user.

Application	Abreviews	Notes
WB		1/500 - 1/3000. Predicted molecular weight: 21 kDa.

Application	Abreviews	Notes
IHC-P	★★★★★	1/100 - 1/250.
ICC/IF		1/100 - 1/200.

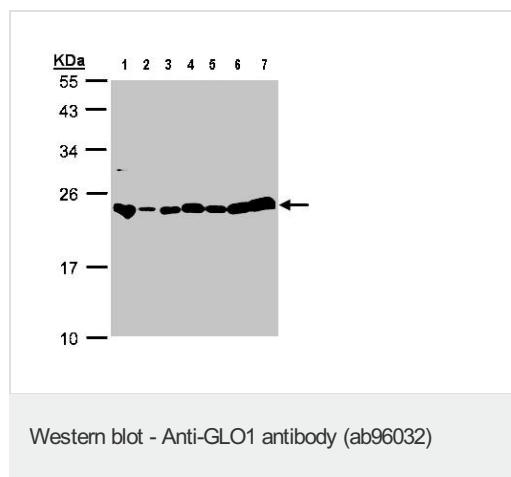
Target

Function Catalyzes the conversion of hemimercaptal, formed from methylglyoxal and glutathione, to S-lactoylglutathione.

Pathway Secondary metabolite metabolism; methylglyoxal degradation; (R)-lactate from methylglyoxal: step 1/2.

Sequence similarities Belongs to the glyoxalase I family.

Images



All lanes : Anti-GLO1 antibody (ab96032) at 1/1000 dilution

Lane 1 : 293T whole cell lysate

Lane 2 : A431 whole cell lysate

Lane 3 : H1299 whole cell lysate

Lane 4 : HeLa whole cell lysate

Lane 5 : HepG2 whole cell lysate

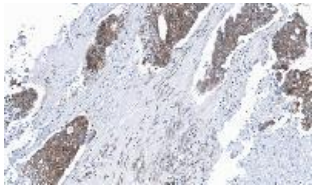
Lane 6 : MOLT4 whole cell lysate

Lane 7 : Raji whole cell lysate

Lysates/proteins at 30 µg per lane.

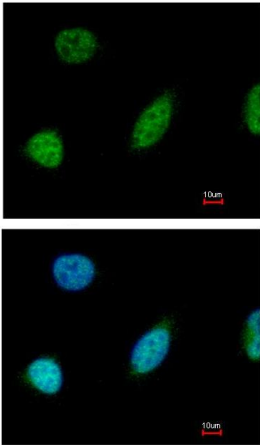
Predicted band size: 21 kDa

12% SDS PAGE



Immunohistochemical analysis of GLO1 in paraffin embedded ovarian carcinoma tissue, using ab96032 at a 1/100 dilution.

Immunohistochemistry (Formalin/PFA-fixed paraffin-embedded sections) - Anti-GLO1 antibody (ab96032)



Immunofluorescence analysis of GLO1 in paraformaldehyde fixed HeLa, using ab96032 at a 1/200 dilution. Lower image: merged with DNA probe.

Immunocytochemistry/ Immunofluorescence - Anti-GLO1 antibody (ab96032)

Please note: All products are "FOR RESEARCH USE ONLY AND ARE NOT INTENDED FOR DIAGNOSTIC OR THERAPEUTIC USE"

Our Abpromise to you: Quality guaranteed and expert technical support

- Replacement or refund for products not performing as stated on the datasheet
- Valid for 12 months from date of delivery
- Response to your inquiry within 24 hours
- We provide support in Chinese, English, French, German, Japanese and Spanish
- Extensive multi-media technical resources to help you
- We investigate all quality concerns to ensure our products perform to the highest standards

If the product does not perform as described on this datasheet, we will offer a refund or replacement. For full details of the Abpromise, please visit <http://www.abcam.com/abpromise> or contact our technical team.

Terms and conditions

- Guarantee only valid for products bought direct from Abcam or one of our authorized distributors