

## Product datasheet

# Anti-GOSR1 antibody [EP1768Y] ab53288

Recombinant RabMAB

★★★★☆ 1 Abreviews 3 Images

### Overview

<b>Product name</b>	Anti-GOSR1 antibody [EP1768Y]
<b>Description</b>	Rabbit monoclonal [EP1768Y] to GOSR1
<b>Specificity</b>	The mouse and rat recommendation is based on the WB results. We do not guarantee IHC-P for mouse and rat.
<b>Tested applications</b>	<b>Suitable for:</b> ICC/IF, WB, ICC, Flow Cyt, IHC-P <b>Unsuitable for:</b> IP
<b>Species reactivity</b>	<b>Reacts with:</b> Mouse, Rat, Human
<b>Immunogen</b>	corresponding to Human GOSR1 (N terminal).
<b>Positive control</b>	SKBR-3 cell lysate 3T3 cell lysate HeLa cells Human stomach carcinoma
<b>General notes</b>	

Our RabMAB<sup>®</sup> technology is a patented hybridoma-based technology for making rabbit monoclonal antibodies. For details on our patents, please refer to [RabMab<sup>®</sup> patents](#)

**We are constantly working hard to ensure we provide our customers with best in class antibodies. As a result of this work we are pleased to now offer this antibody in purified format. We are in the process of updating our datasheets. The purified format is designated 'PUR' on our product labels. If you have any questions regarding this update, please contact our Scientific Support team.**

This product is a recombinant rabbit monoclonal antibody.

### Properties

<b>Form</b>	Liquid
<b>Storage instructions</b>	Shipped at 4°C. Store at +4°C short term (1-2 weeks). Upon delivery aliquot. Store at -20°C. Avoid freeze / thaw cycle. Stable for 12 months at -20°C.
<b>Storage buffer</b>	pH: 7.20 Preservative: 0.01% Sodium azide Constituents: 59% PBS, 40% Glycerol, 0.05% BSA
<b>Purity</b>	Protein A purified

<b>Clonality</b>	Monoclonal
<b>Clone number</b>	EP1768Y
<b>Isotype</b>	IgG

## Applications

Our [Abpromise guarantee](#) covers the use of **ab53288** in the following tested applications.

The application notes include recommended starting dilutions; optimal dilutions/concentrations should be determined by the end user.

Application	Abreviews	Notes
ICC/IF		1/150. <b>For unpurified use at 1/50 - 1/100.</b>
WB	★★★★☆	1/1000. Detects a band of approximately 29 kDa (predicted molecular weight: 29 kDa). <b>For unpurified use at 1/250 - 1/500.</b>
ICC		1/50 - 1/100.
Flow Cyt		1/120. <a href="#">ab172730</a> - Rabbit monoclonal IgG, is suitable for use as an isotype control with this antibody. <b>For unpurified use at 1/30.</b>
IHC-P		1/100. The mouse and rat recommendation is based on the WB results. We do not guarantee IHC-P for mouse and rat.

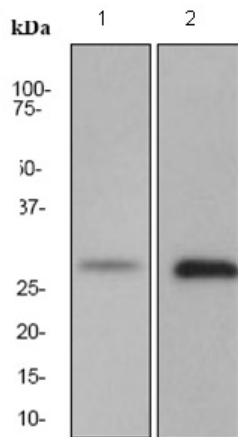
**Application notes**                      Is unsuitable for IP.

## Target

**Relevance**                                      GOSR1 is a trafficking membrane protein which transports proteins among the endoplasmic reticulum and the Golgi and between Golgi compartments; it is considered an essential component of the Golgi SNAP receptor (SNARE) complex.

**Cellular localization**                      Cell Membrane, Endoplasmic reticulum and Golgi Apparatus

## Images



Western blot - GOSR1 antibody [EP1768Y] (ab53288)

**All lanes :** Anti-GOSR1 antibody [EP1768Y] (ab53288) at 1/500 dilution (unpurified)

**Lane 1 :** SKBR-3 cell lysate

**Lane 2 :** 3T3 cell lysate

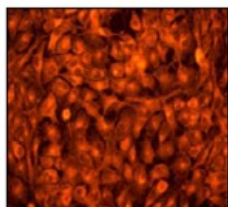
Lysates/proteins at 10 µg per lane.

**Secondary**

Goat anti-rabbit HRP at 1/2000 dilution

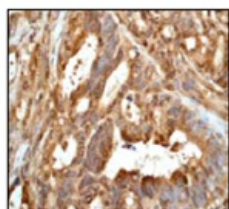
**Predicted band size :** 29 kDa

**Observed band size :** 29 kDa



Immunocytochemistry/ Immunofluorescence - Anti-GOSR1 antibody [EP1768Y] (ab53288)

HeLa cells stained with unpurified ab53288 at 1/50 - 1/100 dilution



Immunohistochemistry (Formalin/PFA-fixed paraffin-embedded sections) - Anti-GOSR1 antibody [EP1768Y] (ab53288)

Human stomach carcinoma staining with unpurified ab53288 at 1/100 - 1/250 dilution

**Please note:** All products are "FOR RESEARCH USE ONLY AND ARE NOT INTENDED FOR DIAGNOSTIC OR THERAPEUTIC USE"

**Our Abpromise to you: Quality guaranteed and expert technical support**

- Replacement or refund for products not performing as stated on the datasheet
- Valid for 12 months from date of delivery
- Response to your inquiry within 24 hours

- We provide support in Chinese, English, French, German, Japanese and Spanish
- Extensive multi-media technical resources to help you
- We investigate all quality concerns to ensure our products perform to the highest standards

If the product does not perform as described on this datasheet, we will offer a refund or replacement. For full details of the Abpromise, please visit <http://www.abcam.com/abpromise> or contact our technical team.

### **Terms and conditions**

---

- Guarantee only valid for products bought direct from Abcam or one of our authorized distributors