

## Product datasheet

# Anti-GPCR GPR49 antibody [EPR3065Y] ab75850

Recombinant **RabMAb**

★★★★☆ 7 Abreviews 22 References 1 Image

### Overview

---

<b>Product name</b>	Anti-GPCR GPR49 antibody [EPR3065Y]
<b>Description</b>	Rabbit monoclonal [EPR3065Y] to GPCR GPR49
<b>Host species</b>	Rabbit
<b>Tested applications</b>	<b>Suitable for:</b> WB, IP <b>Unsuitable for:</b> Flow Cyt, ICC/IF or IHC-P
<b>Species reactivity</b>	<b>Reacts with:</b> Mouse, Rat, Human
<b>Immunogen</b>	Synthetic peptide within Human GPCR GPR49 aa 800-900 (C terminal). The exact sequence is proprietary. (Peptide available as <a href="#">ab221221</a> )
<b>Positive control</b>	Fetal skeletal muscle lysate.
<b>General notes</b>	

Our RabMAb<sup>®</sup> technology is a patented hybridoma-based technology for making rabbit monoclonal antibodies. For details on our patents, please refer to [RabMAb<sup>®</sup> patents](#)

This product is a recombinant rabbit monoclonal antibody.

### Properties

---

<b>Form</b>	Liquid
<b>Storage instructions</b>	Shipped at 4°C. Upon delivery aliquot and store at -20°C. Avoid freeze / thaw cycles.
<b>Storage buffer</b>	PBS 49%, Sodium azide 0.01%, Glycerol 50%, BSA 0.05%
<b>Purity</b>	Tissue culture supernatant
<b>Clonality</b>	Monoclonal
<b>Clone number</b>	EPR3065Y
<b>Isotype</b>	IgG

### Applications

---

Our [Abpromise guarantee](#) covers the use of **ab75850** in the following tested applications.

The application notes include recommended starting dilutions; optimal dilutions/concentrations should be determined by the end user.

Application	Abreviews	Notes
WB	★★★★☆	1/1000. Predicted molecular weight: 100 kDa. Can be blocked with <a href="#">GPCR GPR49 peptide (ab221221)</a> .
IP		1/20.

**Application notes** Is unsuitable for Flow Cyt, ICC/IF or IHC-P.

## Target

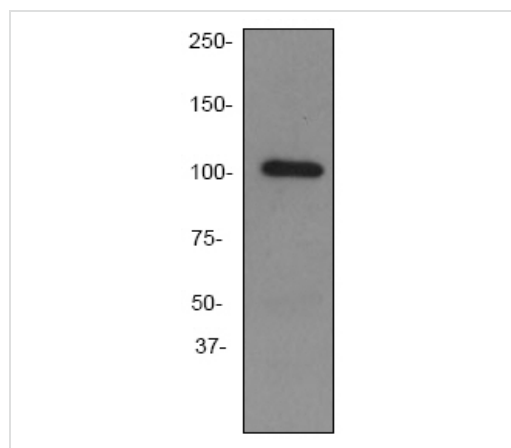
**Function** Orphan receptor. Stem cell marker of the intestinal epithelium and the hair follicle. Target gene of Wnt signaling.

**Tissue specificity** Expressed in skeletal muscle, placenta, spinal cord, and various region of brain. Expressed at the base of crypts in colonic and small mucosa stem cells. In premalignant cancer expression is not restricted to the cript base. Overexpressed in cancers of the ovary, colon and liver.

**Sequence similarities** Belongs to the G-protein coupled receptor 1 family.  
Contains 16 LRR (leucine-rich) repeats.  
Contains 1 LRRNT domain.

**Cellular localization** Cell membrane.

## Images



Anti-GPCR GPR49 antibody [EPR3065Y] (ab75850) at 1/1000 dilution + Fetal skeletal muscle lysate at 10 µg

**Secondary**  
HRP-labeled goat anti-rabbit at 1/2000 dilution

**Predicted band size:** 100 kDa

**Observed band size:** 100 kDa

Western blot - Anti-GPCR GPR49 antibody [EPR3065Y] (ab75850)

**Please note:** All products are "FOR RESEARCH USE ONLY AND ARE NOT INTENDED FOR DIAGNOSTIC OR THERAPEUTIC USE"

## Our Abpromise to you: Quality guaranteed and expert technical support

- Replacement or refund for products not performing as stated on the datasheet
- Valid for 12 months from date of delivery

- Response to your inquiry within 24 hours
- We provide support in Chinese, English, French, German, Japanese and Spanish
- Extensive multi-media technical resources to help you
- We investigate all quality concerns to ensure our products perform to the highest standards

If the product does not perform as described on this datasheet, we will offer a refund or replacement. For full details of the Abpromise, please visit <http://www.abcam.com/abpromise> or contact our technical team.

### **Terms and conditions**

---

- Guarantee only valid for products bought direct from Abcam or one of our authorized distributors