

Product datasheet

Anti-GPCR PGR10 antibody ab61433

1 Image

Overview

<b>Product name</b>	Anti-GPCR PGR10 antibody
<b>Description</b>	Rabbit polyclonal to GPCR PGR10
<b>Host species</b>	Rabbit
<b>Tested applications</b>	<b>Suitable for:</b> IHC-P
<b>Species reactivity</b>	<b>Reacts with:</b> Human
<b>Immunogen</b>	Synthetic peptide corresponding to Human GPCR PGR10 (C terminal) conjugated to Keyhole Limpet Haemocyanin (KLH).
<b>Positive control</b>	Human spinal cord tissue.

Properties

<b>Form</b>	Liquid
<b>Storage instructions</b>	Shipped at 4°C. Store at +4°C short term (1-2 weeks). Upon delivery aliquot. Store at -20°C or -80°C. Avoid freeze / thaw cycle.
<b>Storage buffer</b>	Preservative: 0.1% Sodium Azide Constituents: PBS, pH 7.7
<b>Purity</b>	Immunogen affinity purified
<b>Clonality</b>	Polyclonal
<b>Isotype</b>	IgG

Applications

Our [Abpromise guarantee](#) covers the use of **ab61433** in the following tested applications.

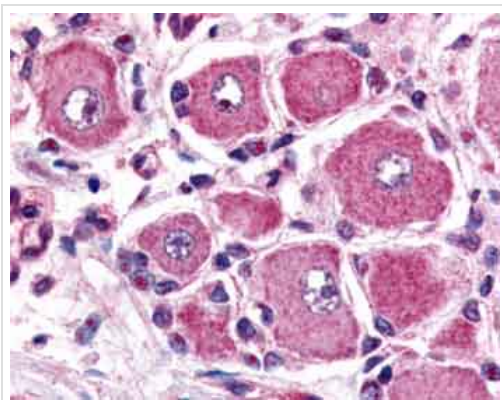
The application notes include recommended starting dilutions; optimal dilutions/concentrations should be determined by the end user.

Application	Abreviews	Notes
IHC-P		Use a concentration of 2.5 - 5 µg/ml.

Target

<b>Relevance</b>	GPCR PGR10 belongs to the G-protein coupled receptor 1 family and is an orphan receptor. PGR10 expression has been documented in rat brain and testis and in chick peripheral nervous system.
<b>Cellular localization</b>	Cell membrane; Multi-pass membrane protein

## Images



Ab61433 at 2.5 - 5.0µg/ml staining human GPCR PGR10 in spinal cord dorsal root ganglion. Formalin fixed, paraffin embedded tissue.

Immunohistochemistry (Formalin/PFA-fixed paraffin-embedded sections) - Anti-GPCR PGR10 antibody (ab61433)

**Please note:** All products are "FOR RESEARCH USE ONLY AND ARE NOT INTENDED FOR DIAGNOSTIC OR THERAPEUTIC USE"

## Our Abpromise to you: Quality guaranteed and expert technical support

- Replacement or refund for products not performing as stated on the datasheet
- Valid for 12 months from date of delivery
- Response to your inquiry within 24 hours
- We provide support in Chinese, English, French, German, Japanese and Spanish
- Extensive multi-media technical resources to help you
- We investigate all quality concerns to ensure our products perform to the highest standards

If the product does not perform as described on this datasheet, we will offer a refund or replacement. For full details of the Abpromise, please visit <http://www.abcam.com/abpromise> or contact our technical team.

## Terms and conditions

- Guarantee only valid for products bought direct from Abcam or one of our authorized distributors