


Product datasheet

Anti-Glucose Transporter GLUT10 antibody ab110528

1 References 2 Images

Overview

Product name	Anti-Glucose Transporter GLUT10 antibody
Description	Rabbit polyclonal to Glucose Transporter GLUT10
Host species	Rabbit
Tested applications	Suitable for: WB, IHC-P
Species reactivity	Reacts with: Human Predicted to work with: Chimpanzee, Macaque monkey, Gorilla, Orangutan 
Immunogen	Synthetic peptide conjugated to KLH derived from within residues 350 - 450 of Human Glucose Transporter GLUT10. Read Abcam's proprietary immunogen policy
Positive control	This antibody gave positive in Human Pancreas tissue lysate. This antibody gave a positive result in IHC in the following FFPE tissue: Human normal pancreas.

Properties

Form	Liquid
Storage instructions	Shipped at 4°C. Store at +4°C short term (1-2 weeks). Upon delivery aliquot. Store at -20°C or -80°C. Avoid freeze / thaw cycle.
Storage buffer	pH: 7.40 Preservative: 0.02% Sodium azide Constituent: PBS Note: Batches of this product that have a concentration < 1mg/ml may have BSA added as a stabilising agent. If you would like information about the formulation of a specific lot, please contact our scientific support team who will be happy to help.
Purity	Immunogen affinity purified
Clonality	Polyclonal
Isotype	IgG

Applications

Our [Abpromise guarantee](#) covers the use of **ab110528** in the following tested applications.

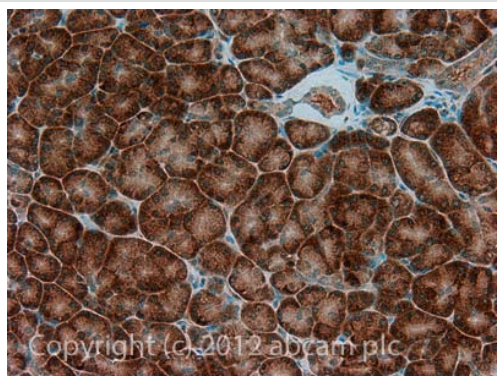
The application notes include recommended starting dilutions; optimal dilutions/concentrations should be determined by the end user.

Application	Abreviews	Notes
WB		Use a concentration of 1 µg/ml. Detects a band of approximately 56 kDa (predicted molecular weight: 56 kDa).
IHC-P		Use a concentration of 5 µg/ml.

Target

Function	Facilitative glucose transporter.
Tissue specificity	Widely expressed; highest levels in liver and pancreas.
Involvement in disease	Defects in SLC2A10 are the cause of arterial tortuosity syndrome (ATS) [MIM:208050]. ATS is an autosomal recessive disorder characterized by tortuosity and elongation of major arteries, often resulting in death at young age. Other typical features include aneurysms of large arteries and stenosis of the pulmonary artery, in association with facial features and several connective tissue manifestations such as soft skin and joint laxity. Histopathological findings include fragmentation of elastic fibers in the tunica media of large arteries.
Sequence similarities	Belongs to the major facilitator superfamily. Sugar transporter (TC 2.A.1.1) family. Glucose transporter subfamily.
Cellular localization	Endomembrane system. Cytoplasm > perinuclear region.

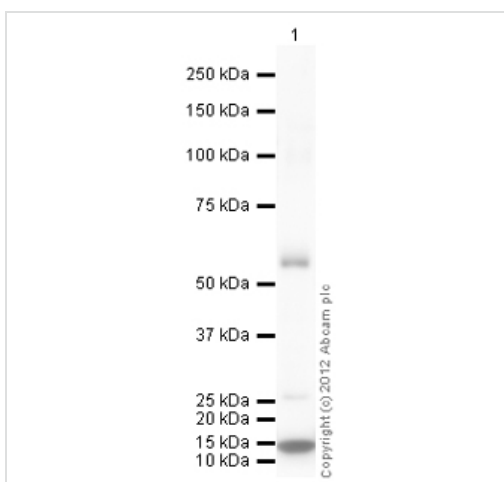
Images



Immunohistochemistry (Formalin/PFA-fixed paraffin-embedded sections) - Anti-Glucose Transporter GLUT10 antibody (ab110528)

IHC image of Glucose Transporter GLUT10 staining in Human normal pancreas formalin fixed paraffin embedded tissue section, performed on a Leica Bond™ system using the standard protocol F. The section was pre-treated using heat mediated antigen retrieval with sodium citrate buffer (pH6, epitope retrieval solution 1) for 20 mins. The section was then incubated with ab110528, 5µg/ml, for 15 mins at room temperature and detected using an HRP conjugated compact polymer system. DAB was used as the chromogen. The section was then counterstained with haematoxylin and mounted with DPX.

For other IHC staining systems (automated and non-automated) customers should optimize variable parameters such as antigen retrieval conditions, primary antibody concentration and antibody incubation times.



Western blot - Anti-Glucose Transporter GLUT10 antibody (ab110528)

Anti-Glucose Transporter GLUT10 antibody (ab110528) at 1 µg/ml + Human pancreas tissue lysate - total protein (ab29816) at 10 µg

Secondary

Goat Anti-Rabbit IgG H&L (HRP) preadsorbed (ab97080) at 1/5000 dilution

Developed using the ECL technique.

Performed under reducing conditions.

Predicted band size: 56 kDa

Observed band size: 56 kDa

Additional bands at: 15 kDa. We are unsure as to the identity of these extra bands.

Exposure time: 4 minutes

Our Abpromise to you: Quality guaranteed and expert technical support

- Replacement or refund for products not performing as stated on the datasheet
- Valid for 12 months from date of delivery
- Response to your inquiry within 24 hours

- We provide support in Chinese, English, French, German, Japanese and Spanish
- Extensive multi-media technical resources to help you
- We investigate all quality concerns to ensure our products perform to the highest standards

If the product does not perform as described on this datasheet, we will offer a refund or replacement. For full details of the Abpromise, please visit <http://www.abcam.com/abpromise> or contact our technical team.

Terms and conditions

- Guarantee only valid for products bought direct from Abcam or one of our authorized distributors