

Product datasheet

Anti-Glycerol kinase antibody ab70029

★★★★☆ 1 Abreviews 2 Images

Overview

Product name	Anti-Glycerol kinase antibody
Description	Rabbit polyclonal to Glycerol kinase
Host species	Rabbit
Specificity	ab70029 detects endogenous levels of total GLPK protein.
Tested applications	Suitable for: WB, ELISA, ICC/IF
Species reactivity	Reacts with: Mouse, Human Predicted to work with: Rat
Immunogen	Synthetic peptide derived from C-terminus of human Glycerol kinase.
Positive control	HeLa cells, extracts from 293 and Jurkat cells.

Properties

Form	Liquid
Storage instructions	Shipped at 4°C. Store at -20°C. Stable for 12 months at -20°C.
Storage buffer	Preservative: 0.02% Sodium Azide Constituents: 50% Glycerol, PBS (without Mg ²⁺ and Ca ²⁺), 150mM Sodium chloride, pH 7.4
Purity	Immunogen affinity purified
Clonality	Polyclonal
Isotype	IgG

Applications

Our [Abpromise guarantee](#) covers the use of **ab70029** in the following tested applications.

The application notes include recommended starting dilutions; optimal dilutions/concentrations should be determined by the end user.

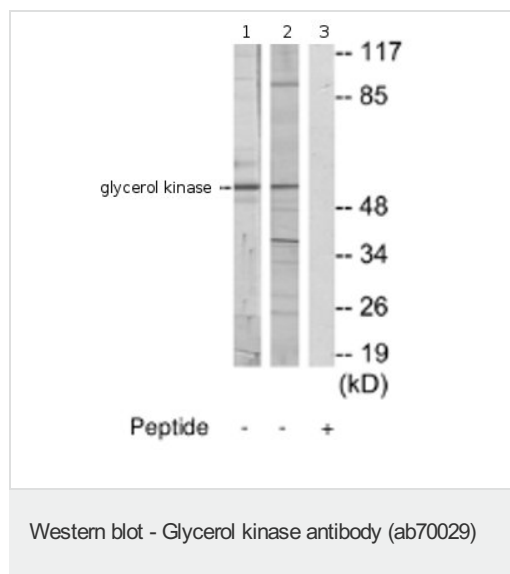
Application	Abreviews	Notes
WB		1/500 - 1/1000. Detects a band of approximately 57 kDa (predicted molecular weight: 57 kDa).
ELISA		1/20000.

Application	Abreviews	Notes
ICC/IF	★★★★☆	1/500 - 1/1000.

Target

Function	Key enzyme in the regulation of glycerol uptake and metabolism.
Tissue specificity	Highly expressed in the liver, kidney and testis. Isoform 2 and isoform 3 are expressed specifically in testis and fetal liver, but not in the adult liver.
Pathway	Polyol metabolism; glycerol degradation via glycerol kinase pathway; sn-glycerol 3-phosphate from glycerol: step 1/1.
Involvement in disease	Defects in GK are the cause of GK deficiency (GKD) [MIM:307030]. This disease can be either symptomatic with episodic metabolic and CNS decompensation or asymptomatic with hyperglycerolemia and hyperglyceroluria only.
Sequence similarities	Belongs to the FGGY kinase family.
Cellular localization	Mitochondrion outer membrane. Cytoplasm. In sperm and fetal tissues, the majority of the enzyme is bound to mitochondria, but in adult tissues, such as liver found in the cytoplasm.

Images



All lanes : Anti-Glycerol kinase antibody (ab70029) at 1/500 dilution

Lane 1 : extracts from 293 cells

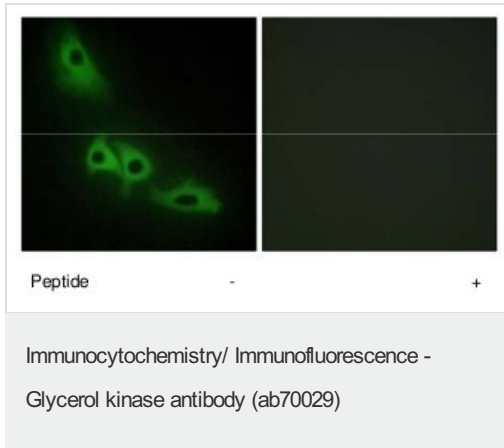
Lane 2 : extracts from Jurkat cells

Lane 3 : extracts from 293 cells with immunising peptide at 10 µg

Lysates/proteins at 30 µg per lane.

Predicted band size: 57 kDa

Observed band size: 57 kDa



This image shows HeLa cells with ab70029 at 1/500 dilution, with and without the immunising peptide.

Please note: All products are "FOR RESEARCH USE ONLY AND ARE NOT INTENDED FOR DIAGNOSTIC OR THERAPEUTIC USE"

Our Abpromise to you: Quality guaranteed and expert technical support

- Replacement or refund for products not performing as stated on the datasheet
- Valid for 12 months from date of delivery
- Response to your inquiry within 24 hours
- We provide support in Chinese, English, French, German, Japanese and Spanish
- Extensive multi-media technical resources to help you
- We investigate all quality concerns to ensure our products perform to the highest standards

If the product does not perform as described on this datasheet, we will offer a refund or replacement. For full details of the Abpromise, please visit <http://www.abcam.com/abpromise> or contact our technical team.

Terms and conditions

- Guarantee only valid for products bought direct from Abcam or one of our authorized distributors