

Product datasheet

Anti-GnRHR antibody ab89266

1 Image

Overview

Product name	Anti-GnRHR antibody
Description	Rabbit polyclonal to GnRHR
Tested applications	Suitable for: WB
Species reactivity	Reacts with: Human
Immunogen	A peptide near intermediate residues of human GnRHR (NP_000397)
Positive control	ES2 cell lysate.

Properties

Form	Lyophilised:Reconstitute in 200ul sterile H ₂ O.
Storage instructions	Shipped at 4°C. Upon delivery aliquot and store at -20°C. Avoid repeated freeze / thaw cycles.
Storage buffer	Preservative: 0.02% Sodium Azide Constituents: 2% BSA, PBS, pH 7.2
Purity	Immunogen affinity purified
Clonality	Polyclonal
Isotype	IgG

Applications

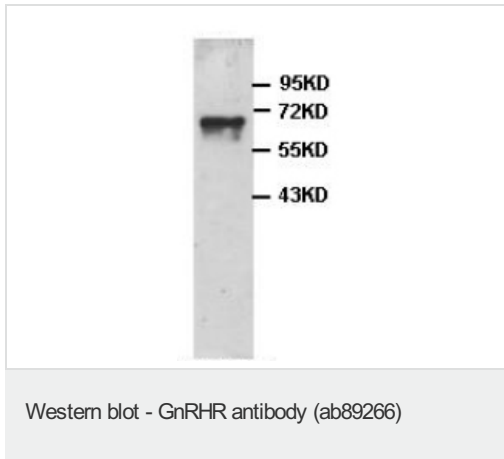
Our [Abpromise guarantee](#) covers the use of **ab89266** in the following tested applications.

The application notes include recommended starting dilutions; optimal dilutions/concentrations should be determined by the end user.

Application	Abreviews	Notes
WB		1/200 - 1/1000. Detects a band of approximately 65 kDa (predicted molecular weight: 38 kDa).

Target

Images



Anti-GnRHR antibody (ab89266) at 1/500
dilution + ES2 cell lysate

Predicted band size : 38 kDa

Observed band size : 65 kDa

Please note: All products are "FOR RESEARCH USE ONLY AND ARE NOT INTENDED FOR DIAGNOSTIC OR THERAPEUTIC USE"

Our Abpromise to you: Quality guaranteed and expert technical support

- Replacement or refund for products not performing as stated on the datasheet
- Valid for 12 months from date of delivery
- Response to your inquiry within 24 hours
- We provide support in Chinese, English, French, German, Japanese and Spanish
- Extensive multi-media technical resources to help you
- We investigate all quality concerns to ensure our products perform to the highest standards

If the product does not perform as described on this datasheet, we will offer a refund or replacement. For full details of the Abpromise, please visit <http://www.abcam.com/abpromise> or contact our technical team.

Terms and conditions

- Guarantee only valid for products bought direct from Abcam or one of our authorized distributors