

## Product datasheet

# Goat Anti-Chicken IgY H&L (Biotin) ab97133

[1 References](#) [1 Image](#)

### Overview

|                            |  |
|----------------------------|--|
| <b>Product name</b>        | Goat Anti-Chicken IgY H&L (Biotin)   |
| <b>Target species</b>      | Chicken  |
| <b>Specificity</b>         | By immunoelectrophoresis and ELISA this antibody reacts specifically with Chicken IgG and with light chains common to other Chicken immunoglobulins. No antibody was detected against non immunoglobulin serum proteins. |
| <b>Tested applications</b> | <b>Suitable for:</b> ELISA, IHC-P, ICC/IF, WB  |
| <b>Conjugation</b>         | Biotin   |

### Properties

|                             |   |
|-----------------------------|---|
| <b>Form</b>                 | Liquid  |
| <b>Storage instructions</b> | Shipped at 4°C. Store at +4°C short term (1-2 weeks). Upon delivery aliquot. Store at -20°C or -80°C. Avoid freeze / thaw cycle.  |
| <b>Storage buffer</b>       | Preservative: 0.09% Sodium Azide<br>Constituents: 0.2% BSA, PBS   |
| <b>Purity</b>               | Immunogen affinity purified   |
| <b>Purification notes</b>   | This antibody was isolated by affinity chromatography using antigen coupled to agarose beads and conjugated to Biotin. Biotinylated antibody was demonstrated with avidin/peroxidase when coated on microtiter wells. |
| <b>Conjugation notes</b>    | Biotin/ antibody protein ratio is 4:1   |
| <b>Clonality</b>            | Polyclonal  |
| <b>Isotype</b>              | IgG   |

### Applications

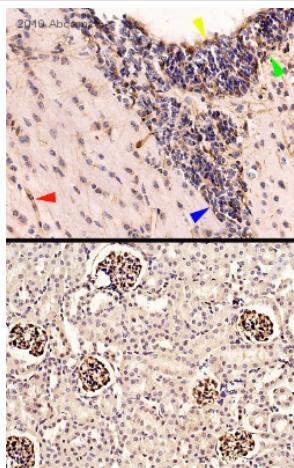
Our [Abpromise guarantee](#) covers the use of **ab97133** in the following tested applications.

The application notes include recommended starting dilutions; optimal dilutions/concentrations should be determined by the end user.

| Application | Abreviews | Notes                          |
|-------------|-----------|--------------------------------|
| ELISA       |           | 1/20000 - 1/400000. (Primary). |

| Application | Abreviews | Notes                                   |
|-------------|-----------|---|
| IHC-P       |           | 1/500 - 1/5000.                         |
| ICC/IF      |           | 1/200 - 1/1000.                         |
| WB          |           | 1/20000 - 1/400000. (Chemiluminescent). |

## Images



Ab97133 was used at dilution 1/200 with the primary antibody [ab81755](#) in IHC-P. See the review on [ab81755](#).

Immunohistochemistry (Formalin/PFA-fixed paraffin-embedded sections) - Goat polyclonal Secondary Antibody to Chicken IgY - H&L (Biotin) (ab97133)

**Please note:** All products are "FOR RESEARCH USE ONLY AND ARE NOT INTENDED FOR DIAGNOSTIC OR THERAPEUTIC USE"

## Our Abpromise to you: Quality guaranteed and expert technical support

- Replacement or refund for products not performing as stated on the datasheet
- Valid for 12 months from date of delivery
- Response to your inquiry within 24 hours
- We provide support in Chinese, English, French, German, Japanese and Spanish
- Extensive multi-media technical resources to help you
- We investigate all quality concerns to ensure our products perform to the highest standards

If the product does not perform as described on this datasheet, we will offer a refund or replacement. For full details of the Abpromise, please visit <http://www.abcam.com/abpromise> or contact our technical team.

## Terms and conditions

- Guarantee only valid for products bought direct from Abcam or one of our authorized distributors