

Product datasheet

Goat Anti-Chicken IgY H&L (HRP) ab97135

★★★★☆ 1 Abreviews 11 References 3 Images

Overview

Product name	Goat Anti-Chicken IgY H&L (HRP)
Host species	Goat
Target species	Chicken
Specificity	By immunoelectrophoresis and ELISA this antibody reacts specifically with Chicken IgY and with light chains common to other Chicken immunoglobulins. No antibody was detected against non immunoglobulin serum proteins.
Tested applications	Suitable for: ICC, IHC-P, ELISA, WB
Conjugation	HRP

Properties

Form	Liquid
Storage instructions	Shipped at 4°C. Store at +4°C.
Storage buffer	Preservative: 0.05% Proclin Constituents: 0.2% BSA, PBS
Purity	Immunogen affinity purified
Purification notes	This antibody was isolated by affinity chromatography using antigen coupled to agarose beads and conjugated to Horse Radish Peroxidase (HRP).
Conjugation notes	Molar enzyme/ antibody protein ratio is 4:1
Clonality	Polyclonal
Isotype	IgG
General notes	Part of the AbExcel range.

Applications

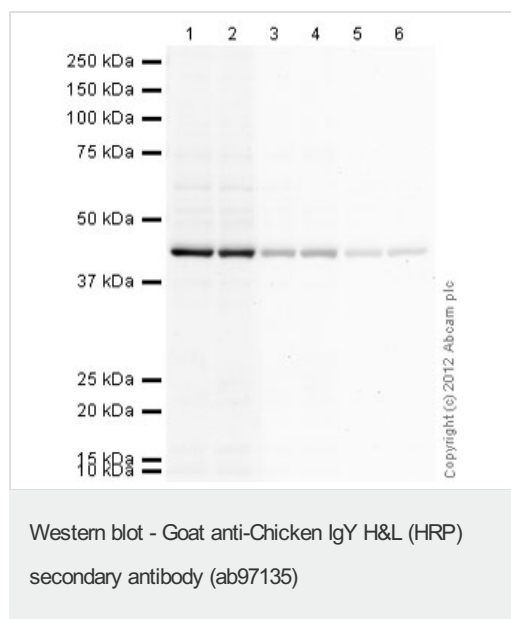
Our [Abpromise guarantee](#) covers the use of **ab97135** in the following tested applications.

The application notes include recommended starting dilutions; optimal dilutions/concentrations should be determined by the end user.

Application	Abreviews	Notes
ICC		Use at an assay dependent dilution.

Application	Abreviews	Notes
IHC-P		1/200 - 1/5000.
ELISA		1/10000 - 1/100000. (Primary).
WB	★★★★☆	1/2000 - 1/20000. Colorimetric: 1/5000 - 1/30000; Chemiluminescent: 1/10000 - 1/50000

Images



All lanes : Anti-beta Actin antibody - Loading Control ([ab13822](#)) at 1 µg/ml

Lanes 1-6 : HeLa (Human epithelial carcinoma cell line) Whole Cell Lysate Lysates/proteins at 10 µg per lane.

Secondary

Lanes 1 - 2 : Goat polyclonal Secondary Antibody to Chicken IgY - H&L (HRP) (ab97135) at 1/2000 dilution

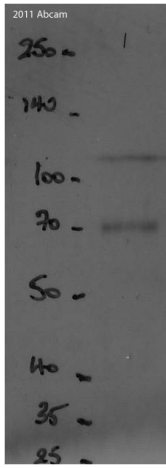
Lanes 3 - 4 : Goat polyclonal Secondary Antibody to Chicken IgY - H&L (HRP) (ab97135) at 1/10000 dilution

Lanes 5 - 6 : Goat polyclonal Secondary Antibody to Chicken IgY - H&L (HRP) (ab97135) at 1/20000 dilution

Developed using the ECL technique.

Performed under reducing conditions.

Exposure time : 90 seconds



Western blot - Goat polyclonal Secondary Antibody to Chicken IgY - H&L (HRP) (ab97135)

Ab97135 used to detect a chicken anti-beta Galactosidase antibody ([ab9361](#)). Ab97135 used at a concentration of 1:2000 in 5% milk blocking buffer in 0.1% Tween, 1x PBS. Whole lysates from DH5a (E.coli). Specific band at approx. 110 KDa. Non-specific bands: 70 Kda. NB. Gels run on 10% Acrylamide gels.

This image is courtesy of an anonymous Abreview

Please note: All products are "FOR RESEARCH USE ONLY AND ARE NOT INTENDED FOR DIAGNOSTIC OR THERAPEUTIC USE"

Our Abpromise to you: Quality guaranteed and expert technical support

- Replacement or refund for products not performing as stated on the datasheet
- Valid for 12 months from date of delivery
- Response to your inquiry within 24 hours
- We provide support in Chinese, English, French, German, Japanese and Spanish
- Extensive multi-media technical resources to help you
- We investigate all quality concerns to ensure our products perform to the highest standards

If the product does not perform as described on this datasheet, we will offer a refund or replacement. For full details of the Abpromise, please visit <http://www.abcam.com/abpromise> or contact our technical team.

Terms and conditions

- Guarantee only valid for products bought direct from Abcam or one of our authorized distributors