

Product datasheet

Goat Anti-Rat IgG H&L (Alkaline Phosphatase) ab6846

1 References 1 Image

Overview

Product name	Goat Anti-Rat IgG H&L (Alkaline Phosphatase)
Target species	Rat
Tested applications	Suitable for: WB, ELISA, Immunomicroscopy, Dot blot, ICC/IF, IHC-P, IHC-Fr
Immunogen	Rat IgG whole molecule
Conjugation	Alkaline Phosphatase

Properties

Form	Liquid
Storage instructions	Shipped at 4°C. Store at +4°C.
Storage buffer	pH: 8 Preservative: 0.1% Sodium azide Constituents: 0.878% Sodium chloride, 1% BSA, 0.788% Tris HCl, 0.0095% Magnesium chloride, 0.014% Zinc chloride, 50% Glycerol
Purity	IgG fraction
Purification notes	This product was prepared from monospecific antiserum by immunoaffinity chromatography using Rat IgG coupled to agarose beads.
Conjugation notes	Alkaline Phosphatase (Calf Intestine) (Molecular Weight 140,000 daltons)
Clonality	Polyclonal
Isotype	IgG
General notes	Part of the AbExcel range.

Applications

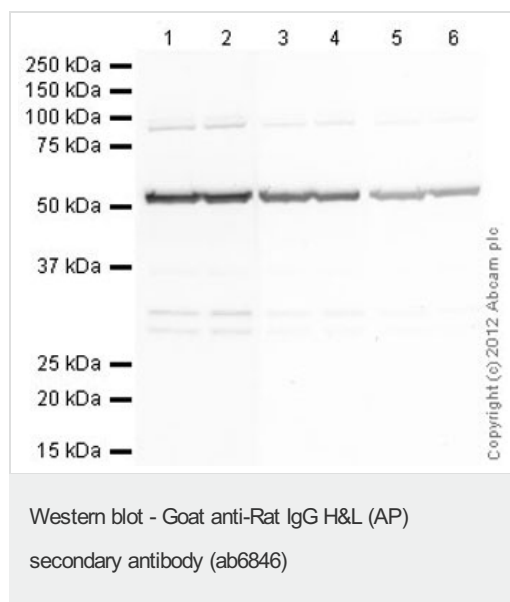
Our [Abpromise guarantee](#) covers the use of **ab6846** in the following tested applications.

The application notes include recommended starting dilutions; optimal dilutions/concentrations should be determined by the end user.

Application	Abreviews	Notes
WB		1/2000 - 1/20000.

Application	Abreviews	Notes
ELISA		1/15000.
Immunomicroscopy		Use at an assay dependent concentration.
Dot blot		Use at an assay dependent concentration.
ICC/IF		1/200 - 1/1000.
IHC-P		Use at an assay dependent concentration.
IHC-Fr		Use at an assay dependent concentration.

Images



All lanes : Anti-Tubulin antibody [YL1/2] - Loading Control ([ab6160](#)) at 1 µg/ml + HeLa (Human epithelial carcinoma cell line) Whole Cell Lysate at 20 µg per lane.

Secondary

Lanes 1 - 2 : Goat polyclonal Secondary Antibody to Rat IgG - H&L (AP) ([ab6846](#)) at 1/5000 dilution

Lanes 3 - 4 : Goat polyclonal Secondary Antibody to Rat IgG - H&L (AP) ([ab6846](#)) at 1/20000 dilution

Lanes 5 - 6 : Goat polyclonal Secondary Antibody to Rat IgG - H&L (AP) ([ab6846](#)) at 1/50000 dilution

Developed using the ECL technique
Performed under reducing conditions.

Predicted band size : 50 kDa

Observed band size : 52 kDa

Additional bands at : 85 kDa. We are unsure as to the identity of these extra bands.

Exposure time : 8 minutes

Abcam recommends blocking with 3% milk to reproduce this western blot data.

Our Abpromise to you: Quality guaranteed and expert technical support

- Replacement or refund for products not performing as stated on the datasheet
- Valid for 12 months from date of delivery
- Response to your inquiry within 24 hours

- We provide support in Chinese, English, French, German, Japanese and Spanish
- Extensive multi-media technical resources to help you
- We investigate all quality concerns to ensure our products perform to the highest standards

If the product does not perform as described on this datasheet, we will offer a refund or replacement. For full details of the Abpromise, please visit <http://www.abcam.com/abpromise> or contact our technical team.

Terms and conditions

- Guarantee only valid for products bought direct from Abcam or one of our authorized distributors