

## Product datasheet

# Anti-HA tag antibody - ChIP Grade ab9110

★★★★★ 48 Abreviews 398 References 5 Images

### Overview

<b>Product name</b>	Anti-HA tag antibody - ChIP Grade
<b>Description</b>	Rabbit polyclonal to HA tag - ChIP Grade
<b>Host species</b>	Rabbit
<b>Specificity</b>	ELISA: The anti HA diluted 1:70.000 gave an O.D.=1.0 in a 15 minute reaction against peptide conjugated with a different carrier than used for anti peptide purification. HRP conjugated Goat anti rabbit IgG was used and TMB was the substrate.
<b>Tested applications</b>	<b>Suitable for:</b> ChIP/Chip, IP, ELISA, WB, ICC/IF, ICC, Flow Cyt, ChIP
<b>Immunogen</b>	YPYDVPDYA (influenza hemagglutinin-HA-epitope) conjugated to KLH.

### Properties

<b>Form</b>	Liquid
<b>Storage instructions</b>	Shipped at 4°C. Store at +4°C short term (1-2 weeks). Upon delivery aliquot. Store at -20°C or -80°C. Avoid freeze / thaw cycle.
<b>Storage buffer</b>	Preservative: 0.1% Sodium azide Constituent: PBS
<b>Purity</b>	Immunogen affinity purified
<b>Purification notes</b>	Antibodies were immunoaffinity purified using the peptide conjugated to a solid-phase support.
<b>Clonality</b>	Polyclonal
<b>Isotype</b>	IgG

### Applications

Our [Abpromise guarantee](#) covers the use of **ab9110** in the following tested applications.

The application notes include recommended starting dilutions; optimal dilutions/concentrations should be determined by the end user.

Application	Abreviews	Notes
ChIP/Chip	★★★★★	Use at an assay dependent concentration.
IP	★★★★★	Use at an assay dependent concentration.

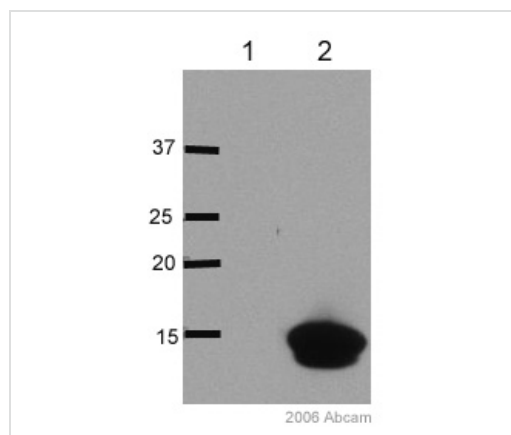
Application	Abreviews	Notes
ELISA		1/200 - 1/500.
WB	★★★★★	1/4000 - 1/10000.
ICC/IF	★★★★★	Use a concentration of 1 - 4 µg/ml.
ICC	★★★★★	Use at an assay dependent concentration.
Flow Cyt	★★★★☆	Use at an assay dependent concentration. <a href="#">ab171870</a> - Rabbit polyclonal IgG, is suitable for use as an isotype control with this antibody.
ChIP	★★★★☆	Use 3 µg for 25 µg of chromatin.

## Target

### Relevance

Human influenza hemagglutinin (HA) is a surface glycoprotein required for the infectivity of the human virus. The HA tag is derived from the HA molecule corresponding to amino acids 98-106 has been extensively used as a general epitope tag in expression vectors. Many recombinant proteins have been engineered to express the HA tag, which does not appear to interfere with the bioactivity or the biodistribution of the recombinant protein. This tag facilitates the detection, isolation, and purification of the proteins.

## Images



Western blot - Anti-HA tag antibody - ChIP Grade (ab9110)

**All lanes** : Anti-HA tag antibody - ChIP Grade (ab9110) at 1/4000 dilution

**Lane 1** : 15ug untransfected wcl lysate

**Lane 2** : 293FT cells transfected with 15kDa HA tagged Vpr (an HIV1 accessory protein)

### Secondary

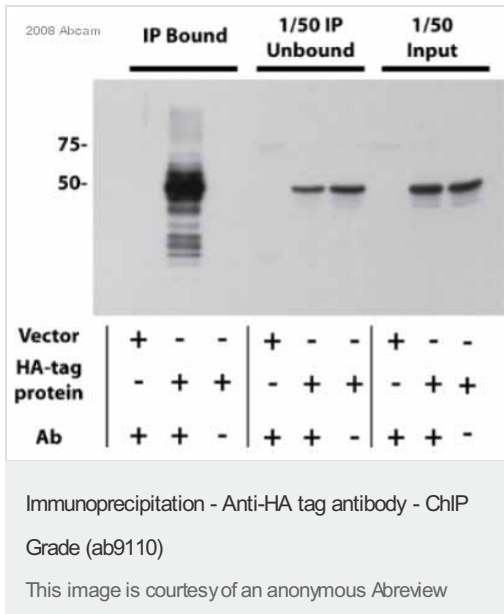
**All lanes** : HRP conjugated Goat anti-Rabbit

Developed using the ECL technique.

Performed under reducing conditions.

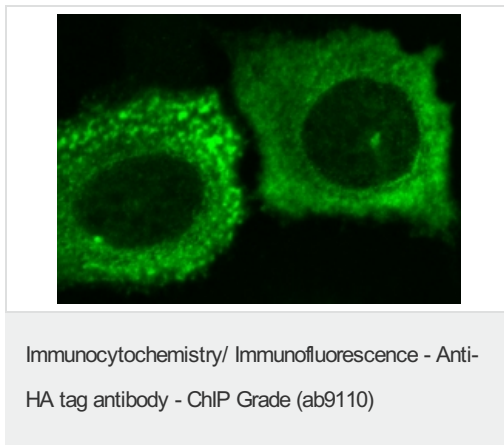
**Exposure time:** 5 seconds

This image is courtesy of an Abreview

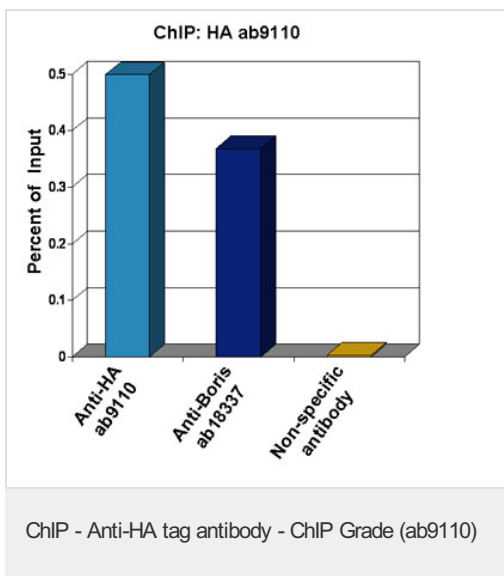


ab9110 was diluted to 4 µg/mg lysate and incubated with a nuclear lysate of HEK293T cells transiently expressing HA-tagged protein and a Protein A matrix for 2 hours at 23°C to achieve immunoprecipitation. 1000 µg of lysate was present in the input.

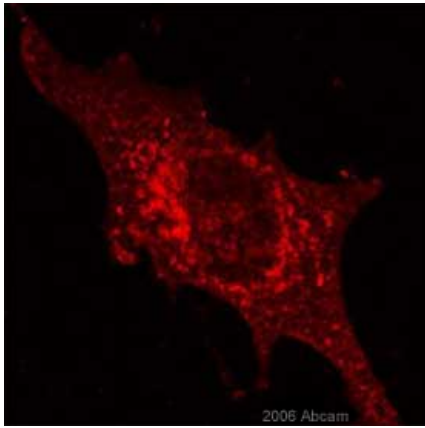
A HRP-conjugated anti-rabbit HA monoclonal antibody diluted 1/1000 was used for the Western Blot step.



This image was kindly supplied as part of the review submitted by Kasper Fugger. Immunofluorescence staining of U-2 cells expressing HA-tagged protein with ab9110.



Xenopus laevis oocytes were injected with mRNA for HA-tagged human BORIS. Chromatin was prepared according to the Abcam X-ChIP protocol. Oocytes were fixed with formaldehyde for 10min. The ChIP was performed with 25µg of chromatin, 20µl of Protein A/G sepharose beads, and 3µg of ab9110 (anti-HA, light blue) or 3µg of ab18337 (anti-Boris, dark blue). A non-specific antibody was used as a control (yellow). The immunoprecipitated DNA was quantified by real time PCR (Taqman approach).



ab 9110 at a 1/200 dilution staining the mouse olivine cell line (oligodendrocyte precursor cell) by immunocytochemistry. The antibody was incubated with the cells for 30 minutes and then detected using a Cy5 conjugated goat anti-rabbit antibody.

This image is courtesy of an Abreview submitted by **Katarina Trajkovic** on **15 March 2006**

Immunocytochemistry/ Immunofluorescence - Anti-HA tag antibody - ChIP Grade (ab9110)

**Please note:** All products are "FOR RESEARCH USE ONLY AND ARE NOT INTENDED FOR DIAGNOSTIC OR THERAPEUTIC USE"

### Our Abpromise to you: Quality guaranteed and expert technical support

- Replacement or refund for products not performing as stated on the datasheet
- Valid for 12 months from date of delivery
- Response to your inquiry within 24 hours
- We provide support in Chinese, English, French, German, Japanese and Spanish
- Extensive multi-media technical resources to help you
- We investigate all quality concerns to ensure our products perform to the highest standards

If the product does not perform as described on this datasheet, we will offer a refund or replacement. For full details of the Abpromise, please visit <http://www.abcam.com/abpromise> or contact our technical team.

### Terms and conditions

- Guarantee only valid for products bought direct from Abcam or one of our authorized distributors