

## Product datasheet

# Anti-HINT3 antibody ab121960

★★★★☆ 1 Abreviews 3 Images

### Overview

<b>Product name</b>	Anti-HINT3 antibody
<b>Description</b>	Rabbit polyclonal to HINT3
<b>Host species</b>	Rabbit
<b>Tested applications</b>	<b>Suitable for:</b> IP, IHC-P, WB, ICC/IF
<b>Species reactivity</b>	<b>Reacts with:</b> Human
<b>Immunogen</b>	antigen sequence: MAEEQVNRSA GLAPDCEASA TAETTVSSVG TCEAAAKSPE PKDYDSTCVF CRIAGRQDPG TELLHCENED LICFKDIKPA ATHHYLVVP, corresponding to amino acids 1-89 of Human HINT3 (UniProt Q9NQE9). <a href="#">Run BLAST with ExPASy</a> <a href="#">Run BLAST with NCBI</a>
<b>Positive control</b>	WB: RT4, U-251 MG, Human liver and Human tonsil lysates IHC-P: Human colon tissue ICC/IF: U-2 OS cells

### Properties

<b>Form</b>	Liquid
<b>Storage instructions</b>	Shipped at 4°C. Upon delivery aliquot and store at -20°C. Avoid freeze / thaw cycles.
<b>Storage buffer</b>	pH: 7.20 Preservative: 0.02% Sodium azide Constituents: 59% PBS, 40% Glycerol
<b>Purity</b>	Immunogen affinity purified
<b>Clonality</b>	Polyclonal
<b>Isotype</b>	IgG

### Applications

Our [Abpromise guarantee](#) covers the use of **ab121960** in the following tested applications.

The application notes include recommended starting dilutions; optimal dilutions/concentrations should be determined by the end user.

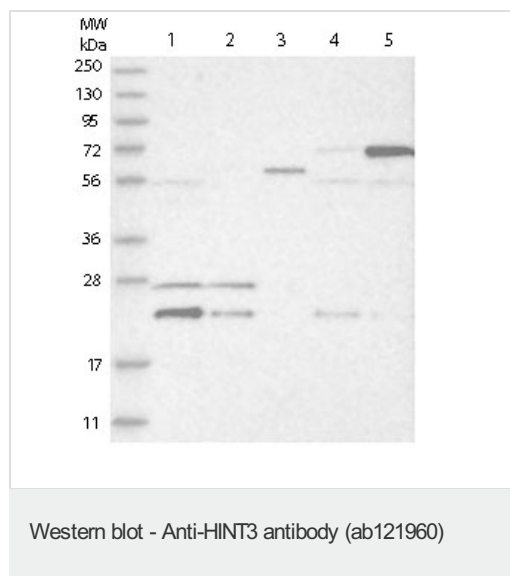
Application	Abreviews	Notes
IP	★★★★☆	Use at an assay dependent concentration.

Application	Abreviews	Notes
IHC-P		1/50 - 1/200. Perform heat mediated antigen retrieval with citrate buffer pH 6 before commencing with IHC staining protocol. Perform heat mediated antigen retrieval via the pressure cooker method.
WB		1/250 - 1/500.
ICC/IF		Use a concentration of 1 - 4 µg/ml. Fixation/Permeabilization: PFA/Triton X-100

## Target

<b>Function</b>	Hydrolyzes phosphoramidate and acyl-adenylate substrates.
<b>Sequence similarities</b>	Belongs to the HINT family. Contains 1 HIT domain.
<b>Cellular localization</b>	Cytoplasm. Nucleus. Localized as aggregates in the cytoplasm and the nucleus.

## Images



**All lanes** : Anti-HINT3 antibody (ab121960) at 1/250 dilution

**Lane 1** : RT4 cell lysate

**Lane 2** : U-251 MG cell lysate

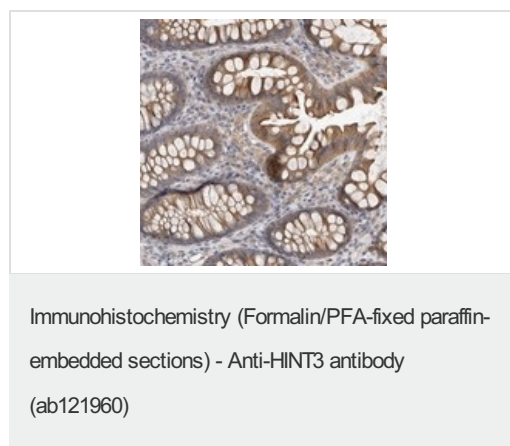
**Lane 3** : Human plasma lysate

**Lane 4** : Human liver lysate

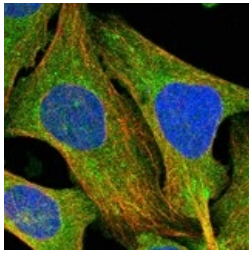
**Lane 5** : Human tonsil lysate

Developed using the ECL technique.

10-20% SDS PAGE



ab121960, at a 1/100 dilution, staining HINT3 in paraffin emebded Human colon tissue by Immunohistochemistry.



ab121960, at 4  $\mu\text{g/ml}$ , staining HINT3 in  
Human cell line U-2 OS by  
Immunofluorescence.

Immunocytochemistry/ Immunofluorescence - Anti-  
HINT3 antibody (ab121960)

**Please note:** All products are "FOR RESEARCH USE ONLY AND ARE NOT INTENDED FOR DIAGNOSTIC OR THERAPEUTIC USE"

### Our Abpromise to you: Quality guaranteed and expert technical support

- Replacement or refund for products not performing as stated on the datasheet
- Valid for 12 months from date of delivery
- Response to your inquiry within 24 hours
- We provide support in Chinese, English, French, German, Japanese and Spanish
- Extensive multi-media technical resources to help you
- We investigate all quality concerns to ensure our products perform to the highest standards

If the product does not perform as described on this datasheet, we will offer a refund or replacement. For full details of the Abpromise, please visit <http://www.abcam.com/abpromise> or contact our technical team.

### Terms and conditions

- Guarantee only valid for products bought direct from Abcam or one of our authorized distributors