

Product datasheet

Anti-HIV1 Reverse Transcriptase antibody ab63911

[3 References](#) [2 Images](#)

Overview

Product name	Anti-HIV1 Reverse Transcriptase antibody
Description	Rabbit polyclonal to HIV1 Reverse Transcriptase
Tested applications	Suitable for: WB, ELISA
Species reactivity	Reacts with HIV1.
Immunogen	HIV1 Reverse Transcriptase, over-expressed as recombinant protein in E.coli
Positive control	Extract of MT4 cells infected with HIV1 (LAI strain).

Properties

Form	Liquid
Storage instructions	Shipped at 4°C. Upon delivery aliquot and store at -20°C. Avoid freeze / thaw cycles.
Storage buffer	Preservative: 0.09% Sodium Azide Constituents: Whole serum
Purity	Whole antiserum
Clonality	Polyclonal
Isotype	IgG

Applications

Our [Abpromise guarantee](#) covers the use of **ab63911** in the following tested applications.

The application notes include recommended starting dilutions; optimal dilutions/concentrations should be determined by the end user.

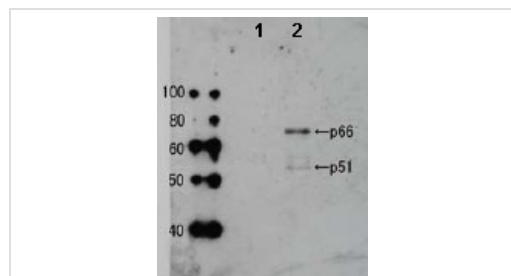
Application	Abreviews	Notes
WB		1/2500. Detects a band of approximately 51, 66 kDa.
ELISA		Use at an assay dependent dilution.

Target

Relevance

HIV1 Reverse Transcriptase is an RNA-dependent DNA polymerase of HIV1 (AIDS virus), subtype B origin. It is responsible for the production of a double stranded DNA copy of the single stranded RNA genome that is contained in the HIV1 virus particle and primed by the host cell lysine-tRNA which partly unfolds and anneals to the 5' end of the viral genomic RNA. This is extended by the polymerase function of RT to give a DNA-RNA hybrid. It also has RNaseH activity which degrades the RNA component of this hybrid once it has been copied.

Images



Western blot - HIV1 Reverse Transcriptase antibody (ab63911)

All lanes : Anti-HIV1 Reverse Transcriptase antibody (ab63911) at 1/2500 dilution

Lane 1 : Extract of MT4 cells

Lane 2 : Extract of MT4 cells infected with HIV-1 (LAI strain)

Observed band size : 51,66 kDa



Western blot - Anti-HIV1 Reverse Transcriptase antibody (ab63911)

Anti-HIV1 Reverse Transcriptase antibody (ab63911) at 1/2500 dilution + Recombinant HIV1 Reverse Transcriptase protein (ab63979) at 0.01 µg

Secondary

Goat Anti-Rabbit IgG H&L (HRP) preadsorbed (ab97080) at 1/5000 dilution

Developed using the ECL technique

Performed under reducing conditions.

Exposure time : 90 seconds

Please note: All products are "FOR RESEARCH USE ONLY AND ARE NOT INTENDED FOR DIAGNOSTIC OR THERAPEUTIC USE"

Our Abpromise to you: Quality guaranteed and expert technical support

- Replacement or refund for products not performing as stated on the datasheet
- Valid for 12 months from date of delivery
- Response to your inquiry within 24 hours
- We provide support in Chinese, English, French, German, Japanese and Spanish
- Extensive multi-media technical resources to help you

- We investigate all quality concerns to ensure our products perform to the highest standards

If the product does not perform as described on this datasheet, we will offer a refund or replacement. For full details of the Abpromise, please visit <http://www.abcam.com/abpromise> or contact our technical team.

Terms and conditions

- Guarantee only valid for products bought direct from Abcam or one of our authorized distributors