


Product datasheet

Anti-HMGB2 antibody ab11973

1 Abreviews 10 References 2 Images

Overview

<b>Product name</b>	Anti-HMGB2 antibody
<b>Description</b>	Rabbit polyclonal to HMGB2
<b>Tested applications</b>	<b>Suitable for:</b> IHC-P, WB
<b>Species reactivity</b>	<b>Reacts with:</b> Mouse, Human <b>Predicted to work with:</b> Rat, Chicken, Pig 
<b>Immunogen</b>	Synthetic peptide: KSEAGKKGPRPTGSK , corresponding to amino acids 166-181 of Human HMGB2. <a href="#">Run BLAST with</a> <a href="#">Run BLAST with</a>
<b>Positive control</b>	K-562 nuclear extract.

Properties

<b>Form</b>	Liquid
<b>Storage instructions</b>	Shipped at 4°C. Upon delivery aliquot and store at -20°C or -80°C. Avoid repeated freeze / thaw cycles.
<b>Storage buffer</b>	Preservative: 0.2% Gelatin, 0.01% Thimerosal and 0.1% Sodium Azide. Constituents: PBS
<b>Purity</b>	Immunogen affinity purified
<b>Clonality</b>	Polyclonal
<b>Isotype</b>	IgG

Applications

Our [Abpromise guarantee](#) covers the use of **ab11973** in the following tested applications.

The application notes include recommended starting dilutions; optimal dilutions/concentrations should be determined by the end user.

Application	Abreviews	Notes
IHC-P		Use a concentration of 1 µg/ml.

Application	Abreviews	Notes
WB		1/500 - 1/1000. Detects a band of approximately 28 kDa.

## Target

### Function

DNA binding proteins that associates with chromatin and has the ability to bend DNA. Binds preferentially single-stranded DNA. Involved in V(D)J recombination by acting as a cofactor of the RAG complex. Acts by stimulating cleavage and RAG protein binding at the 23 bp spacer of conserved recombination signal sequences (RSS).

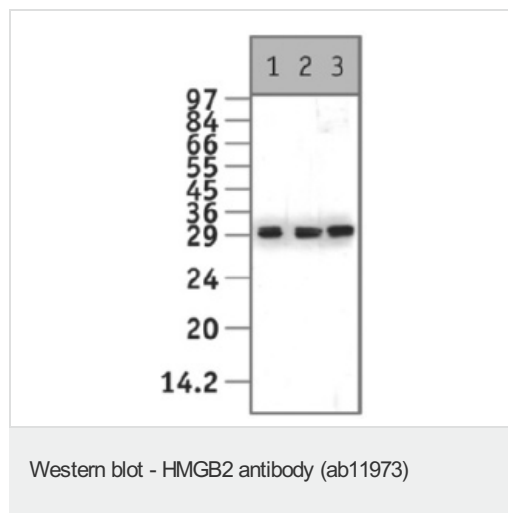
### Sequence similarities

Belongs to the HMGB family.  
Contains 2 HMG box DNA-binding domains.

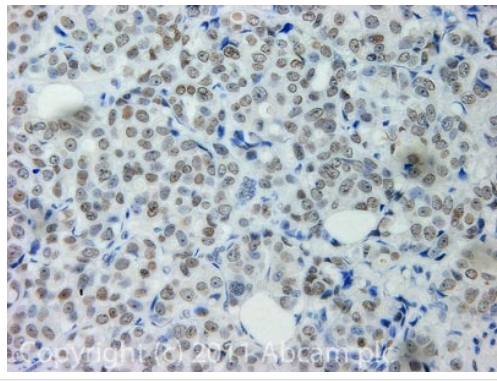
### Cellular localization

Nucleus. Chromosome.

## Images



Detection of HMG2 by Western blot analysis. HMG2 is detected in nuclear extracts derived from the human K-562 cell line using HMG2 rabbit polyclonal antibody. Lanes 1-3 represent serial dilutions of the antibody (1/500, 1/1000 and 1/2000 respectively).



Immunohistochemistry (Formalin/PFA-fixed paraffin-embedded sections) - Anti-HMGB2 antibody (ab11973)

IHC image of ab11973 staining in Breast Cancer formalin fixed paraffin embedded tissue section, performed on a Leica Bond™ system using the standard protocol F. The section was pre-treated using heat mediated antigen retrieval with sodium citrate buffer (pH6, epitope retrieval solution 1) for 20 mins. The section was then incubated with ab11973, 1µg/ml, for 15 mins at room temperature and detected using an HRP conjugated compact polymer system. DAB was used as the chromogen. The section was then counterstained with haematoxylin and mounted with DPX.

For other IHC staining systems (automated and non-automated) customers should optimize variable parameters such as antigen retrieval conditions, primary antibody concentration and antibody incubation times.

**Please note:** All products are "FOR RESEARCH USE ONLY AND ARE NOT INTENDED FOR DIAGNOSTIC OR THERAPEUTIC USE"

### Our Abpromise to you: Quality guaranteed and expert technical support

- Replacement or refund for products not performing as stated on the datasheet
- Valid for 12 months from date of delivery
- Response to your inquiry within 24 hours
- We provide support in Chinese, English, French, German, Japanese and Spanish
- Extensive multi-media technical resources to help you
- We investigate all quality concerns to ensure our products perform to the highest standards

If the product does not perform as described on this datasheet, we will offer a refund or replacement. For full details of the Abpromise, please visit <http://www.abcam.com/abpromise> or contact our technical team.

### Terms and conditions

- Guarantee only valid for products bought direct from Abcam or one of our authorized distributors