

Product datasheet

Anti-HP1BP3 antibody ab68719

1 Image

Overview

| | |
|----------------------------|--|
| Product name | Anti-HP1BP3 antibody |
| Description | Mouse polyclonal to HP1BP3 |
| Host species | Mouse |
| Tested applications | Suitable for: WB |
| Species reactivity | Reacts with: Human |
| Immunogen | Full length human HP1BP3 protein, (NP_057371, 553 a.a) |
| Positive control | HP1BP3 transfected 293T lysate. |

Properties

| | |
|-----------------------------|---|
| Form | Liquid |
| Storage instructions | Shipped at 4°C. Upon delivery aliquot and store at -20°C or -80°C. Avoid repeated freeze / thaw cycles. |
| Storage buffer | Preservative: None Constituents: 1X PBS, pH 7.2 |
| Purity | Protein A purified |
| Clonality | Polyclonal |
| Isotype | IgG |

Applications

Our [Abpromise guarantee](#) covers the use of **ab68719** in the following tested applications.

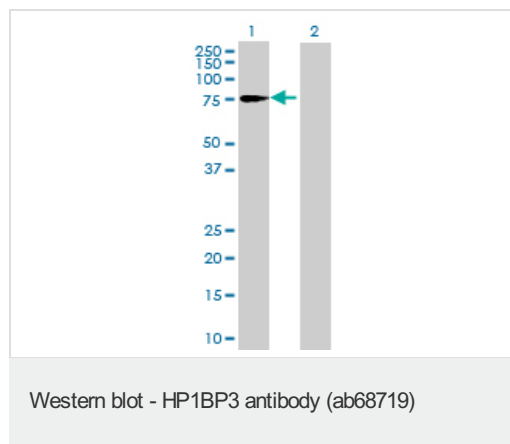
The application notes include recommended starting dilutions; optimal dilutions/concentrations should be determined by the end user.

| Application | Abreviews | Notes |
|-------------|-----------|--|
| WB | | 1/500 - 1/1000. Detects a band of approximately 75 kDa (predicted molecular weight: 61 kDa). |

Target

| | |
|------------------------------|--|
| Function | Component of heterochromatin that maintains heterochromatin integrity during G1/S progression and regulates the duration of G1 phase to critically influence cell proliferative capacity (PubMed:24830416). Mediates chromatin condensation during hypoxia, leading to increased tumor cell viability, radio-resistance, chemo-resistance and self-renewal(PubMed:25100860). |
| Sequence similarities | Contains 3 H15 (linker histone H1/H5 globular) domains. |
| Domain | A central region that included the first H15 (linker histone H1/H5 globular) domain binds at the entry/exit site of the nucleosomal DNA. |
| Cellular localization | Nucleus. Chromosome. localized in nuclei but not in nucleoli in interphase. Colocalized with chromosomes in mitosis, with a gradually increased during G1 progression and a maximum level during late G1 phase (G1/S). |

Images



All lanes : Anti-HP1BP3 antibody (ab68719)
at 1/500 dilution

Lane 1 : HP1BP3 transfected 293T lysate

Lane 2 : Non-transfected 293T lysate

Lysates/proteins at 25 µg per lane.

Secondary

All lanes : Goat Anti-Mouse IgG (H&L)-HRP
at 1/2500 dilution

Predicted band size: 61 kDa

Observed band size: 75 kDa

Please note: All products are "FOR RESEARCH USE ONLY AND ARE NOT INTENDED FOR DIAGNOSTIC OR THERAPEUTIC USE"

Our Abpromise to you: Quality guaranteed and expert technical support

- Replacement or refund for products not performing as stated on the datasheet
- Valid for 12 months from date of delivery
- Response to your inquiry within 24 hours
- We provide support in Chinese, English, French, German, Japanese and Spanish
- Extensive multi-media technical resources to help you
- We investigate all quality concerns to ensure our products perform to the highest standards

If the product does not perform as described on this datasheet, we will offer a refund or replacement. For full details of the Abpromise, please visit <http://www.abcam.com/abpromise> or contact our technical team.

Terms and conditions

- Guarantee only valid for products bought direct from Abcam or one of our authorized distributors