


Product datasheet

Anti-HSD11B1 antibody ab27501

2 References 2 Images

Overview

<b>Product name</b>	Anti-HSD11B1 antibody
<b>Description</b>	Goat polyclonal to HSD11B1
<b>Host species</b>	Goat
<b>Tested applications</b>	<b>Suitable for:</b> IHC-P, ELISA, WB
<b>Species reactivity</b>	<b>Reacts with:</b> Human <b>Predicted to work with:</b> Sheep, Cow, Plasmodium falciparum 
<b>Immunogen</b>	Synthetic peptide: CTSVMDFRINK from the C terminus of Human HSD11B1. (Peptide available as <a href="#">ab136288</a> .) <a href="#">Run BLAST with</a> <a href="#">Run BLAST with</a>
<b>Positive control</b>	Human Liver lysate for Western blot.

Properties

<b>Form</b>	Liquid
<b>Storage instructions</b>	Shipped at 4°C. Upon delivery aliquot and store at -20°C. Avoid freeze / thaw cycles.
<b>Storage buffer</b>	Preservative: 0.02% Sodium Azide Constituents: 0.5% BSA, Tris buffered saline, pH 7.3
<b>Purity</b>	Immunogen affinity purified
<b>Purification notes</b>	Purified from goat serum by ammonium sulphate precipitation followed by antigen affinity chromatography using the immunising peptide.
<b>Clonality</b>	Polyclonal
<b>Isotype</b>	IgG

Applications

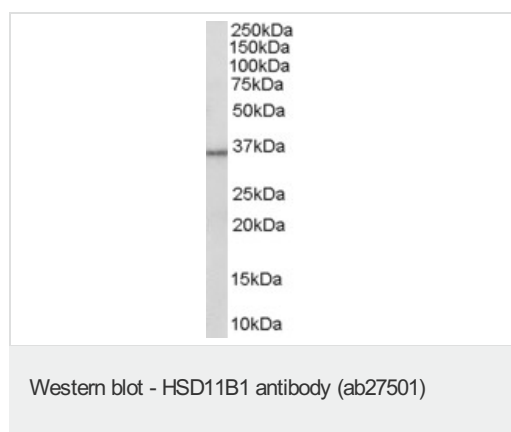
Our [Abpromise guarantee](#) covers the use of **ab27501** in the following tested applications.  
The application notes include recommended starting dilutions; optimal dilutions/concentrations should be determined by the end user.

Application	Abreviews	Notes
IHC-P		Use a concentration of 10 µg/ml. Perform heat mediated antigen retrieval before commencing with IHC staining protocol.
ELISA		1/4000.
WB		Use a concentration of 0.3 - 2 µg/ml. Detects a band of approximately 35 kDa (predicted molecular weight: 32 kDa).

## Target

<b>Function</b>	Catalyzes reversibly the conversion of cortisol to the inactive metabolite cortisone. Catalyzes reversibly the conversion of 7-ketocholesterol to 7-beta-hydroxycholesterol. In intact cells, the reaction runs only in one direction, from 7-ketocholesterol to 7-beta-hydroxycholesterol.
<b>Tissue specificity</b>	Widely expressed. Highest expression in liver.
<b>Involvement in disease</b>	Defects in HSD11B1 are a cause of cortisone reductase deficiency (CRD) [MIM:604931]. In CRD, activation of cortisone to cortisol does not occur, resulting in adrenocorticotropin-mediated androgen excess and a phenotype resembling polycystic ovary syndrome (PCOS).
<b>Sequence similarities</b>	Belongs to the short-chain dehydrogenases/reductases (SDR) family.
<b>Post-translational modifications</b>	Glycosylated.
<b>Cellular localization</b>	Endoplasmic reticulum membrane.

## Images



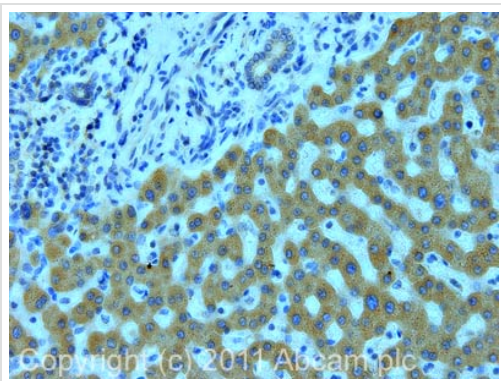
Anti-HSD11B1 antibody (ab27501) at 0.3 µg/ml + Human Liver lysate (35 µg protein in RIPA buffer).

Developed using the ECL technique.

**Predicted band size:** 32 kDa

**Observed band size:** 35 kDa

Primary incubation was 1 hour.



Immunohistochemistry (Formalin/PFA-fixed paraffin-embedded sections)-HSD11B1 antibody(ab27501)

IHC image of ab27501 staining in human normal liver formalin fixed paraffin embedded tissue section, performed on a Leica Bond™ system using the standard protocol B. The section was pre-treated using heat mediated antigen retrieval with sodium citrate buffer (pH6, epitope retrieval solution 1) for 20 mins. The section was then incubated with ab27501, 10µg/ml, for 15 mins at room temperature and detected using an HRP conjugated compact polymer system. DAB was used as the chromogen. The section was then counterstained with haematoxylin and mounted with DPX.

For other IHC staining systems (automated and non-automated) customers should optimize variable parameters such as antigen retrieval conditions, primary antibody concentration and antibody incubation times.

**Please note:** All products are "FOR RESEARCH USE ONLY AND ARE NOT INTENDED FOR DIAGNOSTIC OR THERAPEUTIC USE"

### Our Abpromise to you: Quality guaranteed and expert technical support

- Replacement or refund for products not performing as stated on the datasheet
- Valid for 12 months from date of delivery
- Response to your inquiry within 24 hours
- We provide support in Chinese, English, French, German, Japanese and Spanish
- Extensive multi-media technical resources to help you
- We investigate all quality concerns to ensure our products perform to the highest standards

If the product does not perform as described on this datasheet, we will offer a refund or replacement. For full details of the Abpromise, please visit <http://www.abcam.com/abpromise> or contact our technical team.

### Terms and conditions

- Guarantee only valid for products bought direct from Abcam or one of our authorized distributors