

Product datasheet

Anti-Haptoglobin antibody ab85846

4 References 2 Images

Overview

Product name	Anti-Haptoglobin antibody
Description	Rabbit polyclonal to Haptoglobin
Tested applications	Suitable for: WB, ELISA, IHC-P, Sandwich ELISA
Species reactivity	Reacts with: Human
Immunogen	Human Haptoglobin
Positive control	Human liver tissue

Properties

Form	Liquid
Storage instructions	Shipped at 4°C. Store at +4°C short term (1-2 weeks). Upon delivery aliquot. Store at -20°C long term.
Storage buffer	Preservative: 0.01% Sodium Azide Constituents: PBS, pH 7.2
Purity	Protein A purified
Purification notes	ab85846 recognizes Human Haptoglobin. Assay by immunoelectrophoresis resulted in a single precipitin arc against anti-rabbit serum.
Clonality	Polyclonal
Isotype	IgG

Applications

Our [Abpromise guarantee](#) covers the use of **ab85846** in the following tested applications.

The application notes include recommended starting dilutions; optimal dilutions/concentrations should be determined by the end user.

Application	Abreviews	Notes
WB		1/2000 - 1/10000. Predicted molecular weight: 45 kDa.
ELISA		1/3000 - 1/12000.

Application	Abreviews	Notes
IHC-P		Use a concentration of 2.5 - 5 µg/ml. Perform heat mediated antigen retrieval with citrate buffer pH 6 before commencing with IHC staining protocol.
Sandwich ELISA		Use a concentration of 0.5 µg/ml. For sandwich ELISA, use this antibody as Detection at 0.5 µg/ml with Mouse polyclonal to Haptoglobin (ab52652) as Capture.

Target

Function

As a result of hemolysis, hemoglobin is found to accumulate in the kidney and is secreted in the urine. Haptoglobin captures, and combines with free plasma hemoglobin to allow hepatic recycling of heme iron and to prevent kidney damage. Haptoglobin also acts as an Antimicrobial; Antioxidant, has antibacterial activity and plays a role in modulating many aspects of the acute phase response. Hemoglobin/haptoglobin complexes are rapidly cleared by the macrophage CD163 scavenger receptor expressed on the surface of liver Kupfer cells through an endocytic lysosomal degradation pathway.

Uncleaved haptoglobin, also known as zonulin, plays a role in intestinal permeability, allowing intercellular tight junction disassembly, and controlling the equilibrium between tolerance and immunity to non-self antigens.

Tissue specificity

Expressed by the liver and secreted in plasma.

Involvement in disease

Anhaptoglobinemia

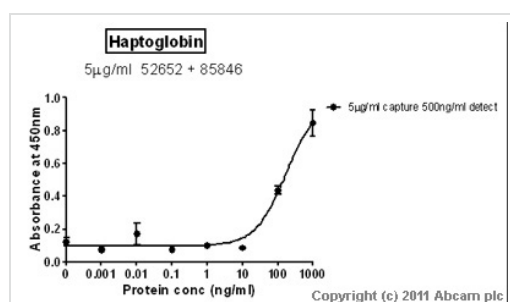
Sequence similarities

Belongs to the peptidase S1 family.
 Contains 1 peptidase S1 domain.
 Contains 2 Sushi (CCP/SCR) domains.

Cellular localization

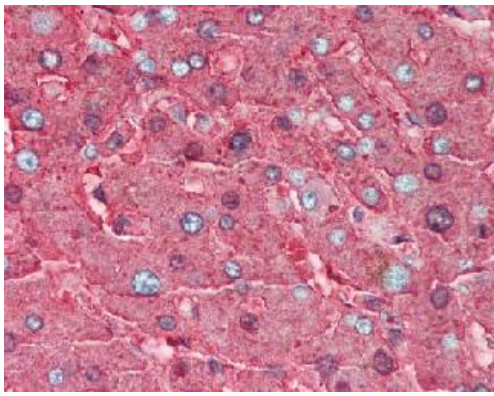
Secreted.

Images



Standard Curve for Haptoglobin (Analyte: [Haptoglobin protein \(ab77872\)](#)); dilution range 1pg/ml to 1µg/ml using Capture Antibody [Mouse polyclonal to Haptoglobin \(ab52652\)](#) at 5µg/ml and Detector Antibody [Rabbit polyclonal to Haptoglobin \(ab85846\)](#) at 0.5µg/ml.

Sandwich ELISA - Haptoglobin antibody (ab85846)



Immunohistochemistry (Formalin/PFA-fixed paraffin-embedded sections) - Haptoglobin antibody (ab85846)

ab85846 at 2.5 µg/ml staining Haptoglobin in formalin fixed and paraffin embedded Human liver tissue.

Please note: All products are "FOR RESEARCH USE ONLY AND ARE NOT INTENDED FOR DIAGNOSTIC OR THERAPEUTIC USE"

Our Abpromise to you: Quality guaranteed and expert technical support

- Replacement or refund for products not performing as stated on the datasheet
- Valid for 12 months from date of delivery
- Response to your inquiry within 24 hours
- We provide support in Chinese, English, French, German, Japanese and Spanish
- Extensive multi-media technical resources to help you
- We investigate all quality concerns to ensure our products perform to the highest standards

If the product does not perform as described on this datasheet, we will offer a refund or replacement. For full details of the Abpromise, please visit <http://www.abcam.com/abpromise> or contact our technical team.

Terms and conditions

- Guarantee only valid for products bought direct from Abcam or one of our authorized distributors