

Product datasheet

Anti-IPL-1/STK13/Aurora C antibody ab38298

[2 Images](#)

Overview

Product name	Anti-IPL-1/STK13/Aurora C antibody
Description	Rabbit polyclonal to IPL-1/STK13/Aurora C
Tested applications	Suitable for: WB, ELISA, ICC/IF Unsuitable for: IP
Species reactivity	Reacts with: Human
Immunogen	Synthetic peptide conjugated to KLH, selected from within amino acids 1-50 of Human IPL-1/STK13/Aurora C, (N terminal region).
Positive control	293 cell lysates and HeLa cells.

Properties

Form	Liquid
Storage instructions	Shipped at 4°C. Store at +4°C short term (1-2 weeks). Upon delivery aliquot. Store at -20°C long term.
Storage buffer	Preservative: 0.09% Sodium Azide Constituents: PBS
Purity	Protein G purified
Clonality	Polyclonal
Isotype	IgG

Applications

Our [Abpromise guarantee](#) covers the use of **ab38298** in the following tested applications.

The application notes include recommended starting dilutions; optimal dilutions/concentrations should be determined by the end user.

Application	Abreviews	Notes
WB		1/100 - 1/500. Detects a band of approximately 36 kDa (predicted molecular weight: 36 kDa).
ELISA		1/1000.
ICC/IF		1/100 - 1/500.

Application	Abreviews	Notes
-------------	-----------	-------

Application notes Is unsuitable for IP.

Target

Function May play a part in organizing microtubules in relation to the function of the centrosome/spindle pole during mitosis. May also contribute to the regulation of chromosome segregation and cytokinesis.

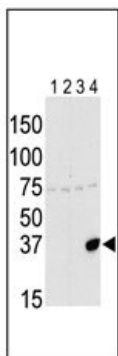
Tissue specificity Isoform 1 and isoform 2 are expressed in testis. Elevated expression levels were seen only in a subset of cancer cells such as HepG2, HuH7 and HeLa cells. Expression is maximum at M phase.

Involvement in disease Defects in AURKC are the cause of male infertility with large-headed multiflagellar polyploid spermatozoa (MIMPS) [MIM:243060]; also known as infertility associated with multi-tailed spermatozoa and excessive DNA.

Sequence similarities Belongs to the protein kinase superfamily. Ser/Thr protein kinase family. Aurora subfamily. Contains 1 protein kinase domain.

Cellular localization Chromosome. Cytoplasm > cytoskeleton > spindle. Distributes in the condensed chromosomes during prophase to metaphase. After entering anaphase, there is a dissociation from separated chromosomes and a redistribution to midzone microtubules, and finally remains in the midbody during cytokinesis.

Images



Western blot - Anti-IPL-1/STK13/Aurora C antibody (ab38298)

This image is courtesy of Drs. K. Sasai and S. Sen from the University of Texas MD Anderson Cancer Center (Houston, TX).

All lanes : Anti-IPL-1/STK13/Aurora C antibody (ab38298) at 1/100 dilution

Lane 1 : 293 cell lysate expressing Flag tag

Lane 2 : 293 cell lysate expressing Flag tagged Aurora A

Lane 3 : 293 cell lysate expressing Flag tagged Aurora B

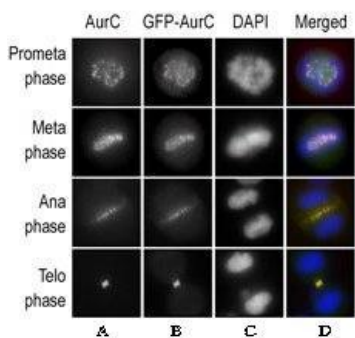
Lane 4 : 293 cell lysate expressing Flag tagged Aurora C

Predicted band size : 36 kDa

Observed band size : 36 kDa

Additional bands at : 75 kDa. We are unsure as to the identity of these extra bands.

This image is courtesy of Drs. K. Sasai and S. Sen from the University of Texas MD Anderson Cancer Center (Houston, TX).



Immunocytochemistry/ Immunofluorescence - IPL-1/STK13/Aurora C antibody (ab38298)

ICC/IF image of ab38298 at 1/100 dilution staining HeLa cells, expressing GFP-Aurora C, at different cellular mitotic stages. The images show (A), the primary antibody (B), GFP fluorescence (C), DAPI nuclear staining and (D) ab38298 merged to DAPI staining.

Please note: All products are "FOR RESEARCH USE ONLY AND ARE NOT INTENDED FOR DIAGNOSTIC OR THERAPEUTIC USE"

Our Abpromise to you: Quality guaranteed and expert technical support

- Replacement or refund for products not performing as stated on the datasheet
- Valid for 12 months from date of delivery
- Response to your inquiry within 24 hours
- We provide support in Chinese, English, French, German, Japanese and Spanish
- Extensive multi-media technical resources to help you

- We investigate all quality concerns to ensure our products perform to the highest standards

If the product does not perform as described on this datasheet, we will offer a refund or replacement. For full details of the Abpromise, please visit <http://www.abcam.com/abpromise> or contact our technical team.

Terms and conditions

- Guarantee only valid for products bought direct from Abcam or one of our authorized distributors