


Product datasheet

Anti-IRF8 antibody ab93718

1 Image

Overview

Product name	Anti-IRF8 antibody
Description	Rabbit polyclonal to IRF8
Host species	Rabbit
Tested applications	Suitable for: WB
Species reactivity	Reacts with: Human Predicted to work with: Mouse, Rat 
Immunogen	Synthetic peptide conjugated to KLH derived from within residues 400 to the C-terminus of Human IRF8. Read Abcam's proprietary immunogen policy
Positive control	This antibody gave a positive signal in Human lymph node tissue lysate.

Properties

Form	Liquid
Storage instructions	Shipped at 4°C. Store at +4°C short term (1-2 weeks). Upon delivery aliquot. Store at -20°C or -80°C. Avoid freeze / thaw cycle.
Storage buffer	Preservative: 0.02% Sodium Azide Constituents: 1% BSA, PBS, pH 7.4
Purity	Immunogen affinity purified
Clonality	Polyclonal
Isotype	IgG

Applications

Our [Abpromise guarantee](#) covers the use of **ab93718** in the following tested applications.

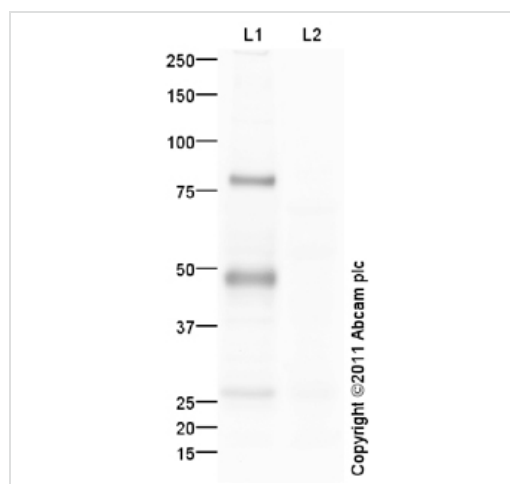
The application notes include recommended starting dilutions; optimal dilutions/concentrations should be determined by the end user.

Application	Abreviews	Notes
WB		Use a concentration of 1 µg/ml. Detects a band of approximately 48 kDa (predicted molecular weight: 48 kDa).

Target

Function	Specifically binds to the upstream regulatory region of type I IFN and IFN-inducible MHC class I genes (the interferon consensus sequence (ICS)). Plays a negative regulatory role in cells of the immune system.
Tissue specificity	Predominantly in lymphoid tissues.
Sequence similarities	Belongs to the IRF family. Contains 1 IRF tryptophan pentad repeat DNA-binding domain.
Post-translational modifications	Ubiquitinated. Ubiquitination by TRIM21 in macrophages, a process that is strongly increased upon interferon gamma stimulation, leads to the enhanced transcriptional activity of target cytokine genes.
Cellular localization	Nucleus.

Images



Western blot - IRF8 antibody (ab93718)

All lanes : Anti-IRF8 antibody (ab93718) at 1 µg/ml

Lane 1 : Human lymph node tissue lysate - total protein (ab29871)

Lane 2 : Human lymph node tissue lysate - total protein (ab29871) with immunizing peptide at 1 µg/ml

Lysates/proteins at 10 µg per lane.

Secondary

All lanes : Goat Anti-Rabbit IgG H&L (HRP) preadsorbed (ab97080) at 1/5000 dilution

Developed using the ECL technique.

Performed under reducing conditions.

Predicted band size: 48 kDa

Observed band size: 48 kDa

Additional bands at: 26 kDa, 78 kDa. We are unsure as to the identity of these extra bands.

Exposure time: 1 minute

Our Abpromise to you: Quality guaranteed and expert technical support

- Replacement or refund for products not performing as stated on the datasheet
- Valid for 12 months from date of delivery
- Response to your inquiry within 24 hours

- We provide support in Chinese, English, French, German, Japanese and Spanish
- Extensive multi-media technical resources to help you
- We investigate all quality concerns to ensure our products perform to the highest standards

If the product does not perform as described on this datasheet, we will offer a refund or replacement. For full details of the Abpromise, please visit <http://www.abcam.com/abpromise> or contact our technical team.

Terms and conditions

- Guarantee only valid for products bought direct from Abcam or one of our authorized distributors