

Product datasheet

Anti-IgA2 antibody ab88250

4 Images

Overview

<b>Product name</b>	Anti-IgA2 antibody
<b>Description</b>	Mouse polyclonal to IgA2
<b>Host species</b>	Mouse
<b>Tested applications</b>	<b>Suitable for:</b> WB, ICC/IF
<b>Species reactivity</b>	<b>Reacts with:</b> Human
<b>Immunogen</b>	Full length human IgA2 protein (AAH73765.1).
<b>Positive control</b>	WB: Human colon tissue lysate; Hela nuclear extract; IgA2 transfected 293T cell lysate ICC/IF: HeLa cell

Properties

<b>Form</b>	Liquid
<b>Storage instructions</b>	Shipped at 4°C. Upon delivery aliquot and store at -20°C or -80°C. Avoid repeated freeze / thaw cycles.
<b>Storage buffer</b>	Preservative: None Constituents: 1X PBS, pH 7.2
<b>Purity</b>	Protein A purified
<b>Clonality</b>	Polyclonal
<b>Isotype</b>	IgG

Applications

Our [Abpromise guarantee](#) covers the use of **ab88250** in the following tested applications.

The application notes include recommended starting dilutions; optimal dilutions/concentrations should be determined by the end user.

Application	Abreviews	Notes
WB		Use a concentration of 1 µg/ml. Predicted molecular weight: 53 kDa.
ICC/IF		Use a concentration of 10 µg/ml.

## Target

---

### Relevance

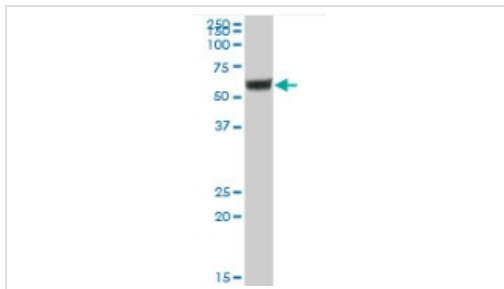
Ig alpha is the major immunoglobulin class in body secretions. It may serve both to defend against local infection and to prevent access of foreign antigens to the general immunologic system.

### Cellular localization

Secreted

## Images

---

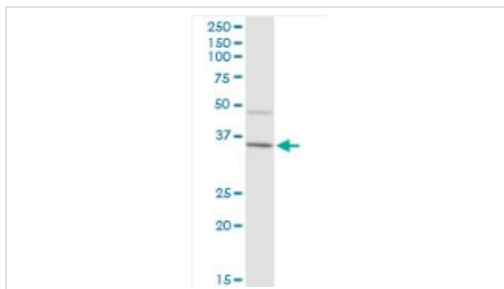


Western blot - Anti-IgA2 antibody (ab88250)

Anti-IgA2 antibody (ab88250) at 1  $\mu$ g/ml +  
human colon tissue lysate at 50  $\mu$ g

**Predicted band size:** 53 kDa

**Observed band size:** 53 kDa



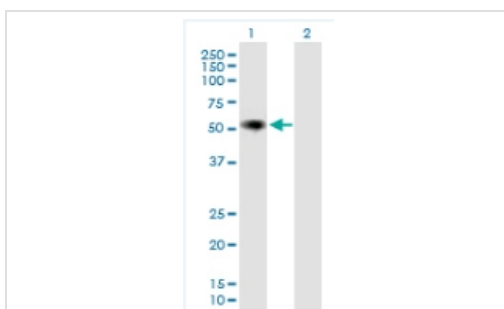
Western blot - Anti-IgA2 antibody (ab88250)

Anti-IgA2 antibody (ab88250) at 1  $\mu$ g/ml +  
HeLa nuclear extract at 50  $\mu$ g

**Predicted band size:** 53 kDa

**Observed band size:** 35 kDa

**Additional bands at:** 48 kDa. We are unsure  
as to the identity of these extra bands.



Western blot - Anti-IgA2 antibody (ab88250)

**All lanes :** Anti-IgA2 antibody (ab88250) at 1  
 $\mu$ g/ml

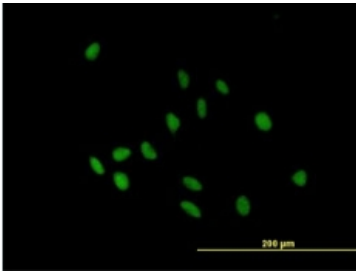
**Lane 1 :** IgA2 transfected 293T cell lysate

**Lane 2 :** Non transfected 293T cell lysate

Lysates/proteins at 50  $\mu$ g per lane.

**Predicted band size:** 53 kDa

**Observed band size:** 53 kDa



ab88250, at 10 µg/ml, staining IgA2 in HeLa cell by Immunofluorescence.

Immunocytochemistry/ Immunofluorescence - Anti-IgA2 antibody (ab88250)

**Please note:** All products are "FOR RESEARCH USE ONLY AND ARE NOT INTENDED FOR DIAGNOSTIC OR THERAPEUTIC USE"

### Our Abpromise to you: Quality guaranteed and expert technical support

- Replacement or refund for products not performing as stated on the datasheet
- Valid for 12 months from date of delivery
- Response to your inquiry within 24 hours
- We provide support in Chinese, English, French, German, Japanese and Spanish
- Extensive multi-media technical resources to help you
- We investigate all quality concerns to ensure our products perform to the highest standards

If the product does not perform as described on this datasheet, we will offer a refund or replacement. For full details of the Abpromise, please visit <http://www.abcam.com/abpromise> or contact our technical team.

### Terms and conditions

- Guarantee only valid for products bought direct from Abcam or one of our authorized distributors