

Product datasheet

Anti-Inhibin beta E chain antibody ab103167

3 Images

Overview

<b>Product name</b>	Anti-Inhibin beta E chain antibody
<b>Description</b>	Rabbit polyclonal to Inhibin beta E chain
<b>Tested applications</b>	<b>Suitable for:</b> WB
<b>Species reactivity</b>	<b>Reacts with:</b> Mouse, Human
<b>Immunogen</b>	Full length protein corresponding to Human Inhibin beta E chain aa 1-350. Database link: <a href="#">P58166</a>
<b>Positive control</b>	Human and Mouse liver tissue lysates; INHBE transfected 293T cell line lysate

Properties

<b>Form</b>	Liquid
<b>Storage instructions</b>	Shipped at 4°C. Upon delivery aliquot. Store at -20°C or -80°C. Avoid freeze / thaw cycle.
<b>Storage buffer</b>	Preservative: None Constituents: 1X PBS, pH 7.2
<b>Purity</b>	Protein A purified
<b>Clonality</b>	Polyclonal
<b>Isotype</b>	IgG

Applications

Our [Abpromise guarantee](#) covers the use of **ab103167** in the following tested applications.

The application notes include recommended starting dilutions; optimal dilutions/concentrations should be determined by the end user.

Application	Abreviews	Notes
WB		1/500 - 1/1000. Predicted molecular weight: 39 kDa.

Target

<b>Function</b>	Inhibins and activins inhibit and activate, respectively, the secretion of follitropin by the pituitary
-----------------	---

gland. Inhibins/activins are involved in regulating a number of diverse functions such as hypothalamic and pituitary hormone secretion, gonadal hormone secretion, germ cell development and maturation, erythroid differentiation, insulin secretion, nerve cell survival, embryonic axial development or bone growth, depending on their subunit composition. Inhibins appear to oppose the functions of activins.

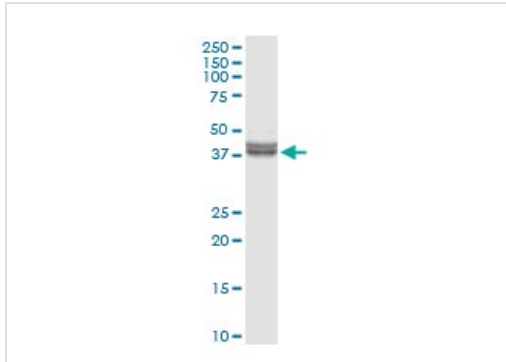
**Sequence similarities**

Belongs to the TGF-beta family.

**Cellular localization**

Secreted.

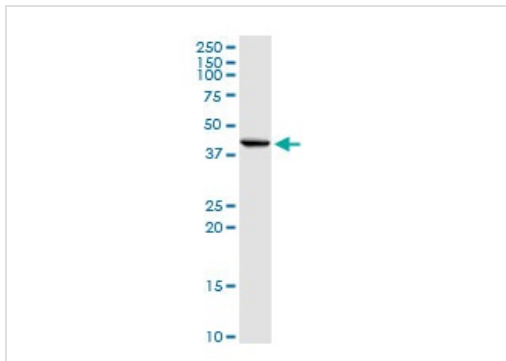
**Images**



Anti-Inhibin beta E chain antibody (ab103167)  
at 1/500 dilution + Human liver tissue lysate at  
50 µg

**Predicted band size : 39 kDa**

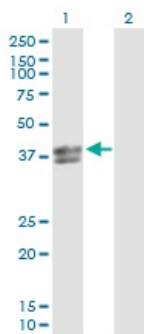
Western blot - Anti-Inhibin beta E chain antibody  
(ab103167)



Anti-Inhibin beta E chain antibody (ab103167)  
at 1/500 dilution + Mouse liver tissue lysate at  
50 µg

**Predicted band size : 39 kDa**

Western blot - Anti-Inhibin beta E chain antibody  
(ab103167)



Western blot - Anti-Inhibin beta E chain antibody  
(ab103167)

**All lanes :** Anti-Inhibin beta E chain antibody  
(ab103167) at 1/500 dilution

**Lane 1 :** INHBE transfected 293T cell line  
lysate

**Lane 2 :** Non-transfected 293T cell line lysate

Lysates/proteins at 25 µg per lane.

**Predicted band size :** 39 kDa

**Please note:** All products are "FOR RESEARCH USE ONLY AND ARE NOT INTENDED FOR DIAGNOSTIC OR THERAPEUTIC USE"

### Our Abpromise to you: Quality guaranteed and expert technical support

- Replacement or refund for products not performing as stated on the datasheet
- Valid for 12 months from date of delivery
- Response to your inquiry within 24 hours
- We provide support in Chinese, English, French, German, Japanese and Spanish
- Extensive multi-media technical resources to help you
- We investigate all quality concerns to ensure our products perform to the highest standards

If the product does not perform as described on this datasheet, we will offer a refund or replacement. For full details of the Abpromise, please visit <http://www.abcam.com/abpromise> or contact our technical team.

### Terms and conditions

- Guarantee only valid for products bought direct from Abcam or one of our authorized distributors