

Product datasheet

Anti-Integrin alpha 4 antibody [PS/2] (Phycoerythrin)
ab24854

1 Image

Overview

Product name	Anti-Integrin alpha 4 antibody [PS/2] (Phycoerythrin)
Description	Rat monoclonal [PS/2] to Integrin alpha 4 (Phycoerythrin)
Conjugation	Phycoerythrin. Ex: 488nm, Em: 575nm
Specificity	This antibody is specific to CD49d, the alpha4 chain of the VLA4 integrin heterodimer.
Tested applications	Suitable for: Functional Studies, IP, Flow Cyt
Species reactivity	Reacts with: Mouse, Human
Immunogen	The details of the immunogen for this antibody are not available.

Properties

Form	Liquid
Storage instructions	Shipped at 4°C. Store at +4°C.
Storage buffer	Preservative: 0.09% Sodium Azide Constituents: 16% Sucrose, PBS; stabilizing agent
Purity	IgG fraction
Clonality	Monoclonal
Clone number	PS/2
Isotype	IgG2b
Light chain type	kappa

Applications

Our [Abpromise guarantee](#) covers the use of **ab24854** in the following tested applications.

The application notes include recommended starting dilutions; optimal dilutions/concentrations should be determined by the end user.

Application	Abreviews	Notes
-------------	-----------	-------

Application	Abreviews	Notes
Functional Studies		Use at an assay dependent concentration. Studies of cell-cell interaction and tumor cell metastasis and adhesion, Inhibition of lymphopoiesis in Whitlock-Witte long-term bone marrow cultures and Retardation of myelopoiesis in Dexter-type cultures.
IP		Use at an assay dependent concentration.
Flow Cyt		Use 0.2µg for 10 ⁶ cells. ab136585 - Rat monoclonal IgG2b, is suitable for use as an isotype control with this antibody.

Target

Function

Integrins alpha-4/beta-1 (VLA-4) and alpha-4/beta-7 are receptors for fibronectin. They recognize one or more domains within the alternatively spliced CS-1 and CS-5 regions of fibronectin. They are also receptors for VCAM1. Integrin alpha-4/beta-1 recognizes the sequence Q-I-D-S in VCAM1. Integrin alpha-4/beta-7 is also a receptor for MADCAM1. It recognizes the sequence L-D-T in MADCAM1. On activated endothelial cells integrin VLA-4 triggers homotypic aggregation for most VLA-4-positive leukocyte cell lines. It may also participate in cytolytic T-cell interactions with target cells.

Sequence similarities

Belongs to the integrin alpha chain family.
Contains 7 FG-GAP repeats.

Domain

The SG1 motif is involved in binding to chondroitin sulfate glycosaminoglycan and cell adhesion.

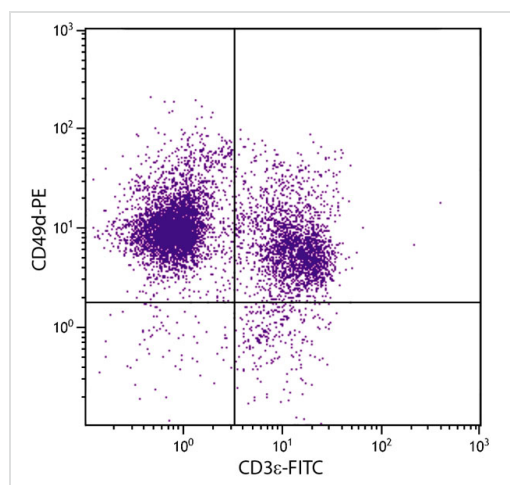
Post-translational modifications

Phosphorylation on Ser-1027 inhibits PXN binding.

Cellular localization

Membrane.

Images



Flow cytometry analysis staining Integrin alpha 4 in mouse splenocytes using ab24854 at a dilution of 0.1 µg/10⁶ cells.

Flow Cytometry - Anti-Integrin alpha 4 antibody
[PS/2] (Phycoerythrin) (ab24854)

Our Abpromise to you: Quality guaranteed and expert technical support

- Replacement or refund for products not performing as stated on the datasheet
- Valid for 12 months from date of delivery
- Response to your inquiry within 24 hours

- We provide support in Chinese, English, French, German, Japanese and Spanish
- Extensive multi-media technical resources to help you
- We investigate all quality concerns to ensure our products perform to the highest standards

If the product does not perform as described on this datasheet, we will offer a refund or replacement. For full details of the Abpromise, please visit <http://www.abcam.com/abpromise> or contact our technical team.

Terms and conditions

- Guarantee only valid for products bought direct from Abcam or one of our authorized distributors