

## Product datasheet

# Anti-Integrin alpha V antibody [P2W7] ab11470

[3 References](#) [2 Images](#)

### Overview

<b>Product name</b>	Anti-Integrin alpha V antibody [P2W7]
<b>Description</b>	Mouse monoclonal [P2W7] to Integrin alpha V
<b>Tested applications</b>	<b>Suitable for:</b> IP, ICC/IF, WB, Flow Cyt
<b>Species reactivity</b>	<b>Reacts with:</b> Human
<b>Immunogen</b>	An ocular melanoma cell line expressing high levels of human integrin alpha V beta 1.
<b>Positive control</b>	Tested with squamous cell carcinoma cells. A375M melanoma cell line. A549 cell line IF/ICC
<b>General notes</b>	Human alpha v is about 150-160kDa under non-reducing conditions. Under reducing conditions it is cleaved into 2 bands of about 125-130kDa +20-25kDa.

### Properties

<b>Form</b>	Liquid
<b>Storage instructions</b>	Shipped at 4°C. Store at +4°C short term (1-2 weeks). Store at -20°C or -80°C. Avoid freeze / thaw cycle.
<b>Storage buffer</b>	Preservative: None Constituents: PBS
<b>Purity</b>	Protein A purified
<b>Purification notes</b>	The antibody is Protein A purified from tissue culture supernatant.
<b>Clonality</b>	Monoclonal
<b>Clone number</b>	P2W7
<b>Isotype</b>	IgG1

### Applications

Our [Abpromise guarantee](#) covers the use of **ab11470** in the following tested applications.

The application notes include recommended starting dilutions; optimal dilutions/concentrations should be determined by the end user.

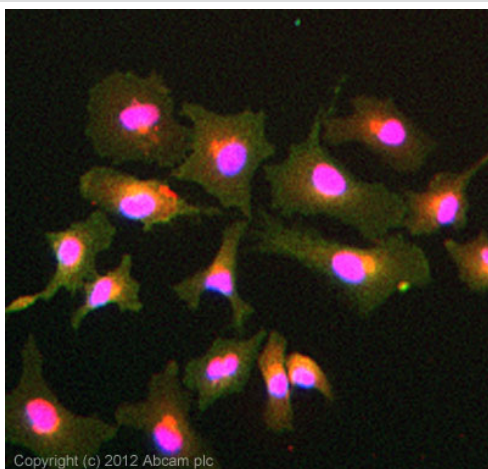
Application	Abreviews	Notes
IP		Use at an assay dependent concentration.

Application	Abreviews	Notes
ICC/IF		Use at an assay dependent concentration.
WB		Use at an assay dependent concentration.
Flow Cyt		Use a concentration of 1 - 10 µg/ml. <a href="#">ab170190</a> -Mouse monoclonal IgG1, is suitable for use as an isotype control with this antibody.

## Target

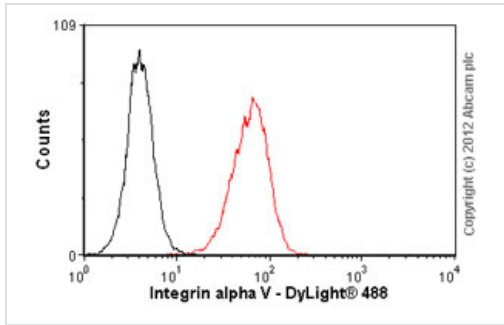
<b>Function</b>	The alpha-V integrins are receptors for vitronectin, cytotactin, fibronectin, fibrinogen, laminin, matrix metalloproteinase-2, osteopontin, osteomodulin, prothrombin, thrombospondin and vWF. They recognize the sequence R-G-D in a wide array of ligands. In case of HIV-1 infection, the interaction with extracellular viral Tat protein seems to enhance angiogenesis in Kaposi's sarcoma lesions.
<b>Sequence similarities</b>	Belongs to the integrin alpha chain family. Contains 7 FG-GAP repeats.
<b>Cellular localization</b>	Membrane.

## Images



Immunocytochemistry/ Immunofluorescence - Anti-Integrin alpha V antibody [P2W7] (ab11470)

ICC/IF image of ab11470 stained A549 cells. The cells were 4% formaldehyde fixed (10 min) and then incubated in 1%BSA / 10% normal goat serum / 0.3M glycine in 0.1% PBS-Tween for 1h to permeabilise the cells and block non-specific protein-protein interactions. The cells were then incubated with the antibody (ab11470, 5µg/ml) overnight at +4°C. The secondary antibody (green) was [ab96879](#), a goat [anti-mouse DyLight® 488](#) (IgG; H+L) used at a 1/250 dilution for 1h. Alexa Fluor® 594 WGA was used to label plasma membranes (red) at a 1/200 dilution for 1h. DAPI was used to stain the cell nuclei (blue) at a concentration of 1.43µM.



Flow Cytometry - Anti-Integrin alpha V antibody [P2W7] (ab11470)

Overlay histogram showing A549 cells stained with ab11470 (red line). The cells were fixed with 80% methanol (5 min) and incubated in 1x PBS / 10% normal goat serum / 0.3M glycine to block non-specific protein-protein interactions. The cells were then incubated with the antibody (ab11470, 1µg/1x10<sup>6</sup> cells) for 30 min at 22°C. The secondary antibody used was a goat anti-mouse DyLight® 488 (IgG; H+L) (ab96879) at 1/500 dilution for 30 min at 22°C. Isotype control antibody (black line) was mouse IgG1 [ICIGG1] (ab91353, 2µg/1x10<sup>6</sup> cells) used under the same conditions. Acquisition of >5,000 events was performed. This antibody gave a positive result in 4% paraformaldehyde (10 min) fixed A549 cells used under the same conditions.

Please note that Abcam do not have any data for use of this antibody on non-fixed cells. We welcome any customer feedback.

**Please note:** All products are "FOR RESEARCH USE ONLY AND ARE NOT INTENDED FOR DIAGNOSTIC OR THERAPEUTIC USE"

### Our Abpromise to you: Quality guaranteed and expert technical support

- Replacement or refund for products not performing as stated on the datasheet
- Valid for 12 months from date of delivery
- Response to your inquiry within 24 hours
- We provide support in Chinese, English, French, German, Japanese and Spanish
- Extensive multi-media technical resources to help you
- We investigate all quality concerns to ensure our products perform to the highest standards

If the product does not perform as described on this datasheet, we will offer a refund or replacement. For full details of the Abpromise, please visit <http://www.abcam.com/abpromise> or contact our technical team.

### Terms and conditions

- Guarantee only valid for products bought direct from Abcam or one of our authorized distributors