


Product datasheet

Anti-JIP3 antibody ab4545

1 Abreviews 1 Image

Overview

Product name	Anti-JIP3 antibody
Description	Goat polyclonal to JIP3
Host species	Goat
Specificity	This antibody is expected to recognise both human isoforms of this protein.
Tested applications	Suitable for: WB, IHC-P
Species reactivity	Reacts with: Mouse Predicted to work with: Rat, Cow, Human 
Immunogen	Synthetic peptide: MEIQMDEGGGVV , corresponding to N terminal amino acids 2-13 of Human JIP3. Run BLAST with Run BLAST with
General notes	GenBank Accession Number – NP_055948; NP_203750. LocusLink ID - 23162 (human); 30957 (mouse). Gene Ontology terms - vesicle-mediated transport; kinesin complex; cytoplasm; kinesin binding; MAP-kinase scaffold activity; protein kinase binding; regulation of JNK cascade.

Properties

Form	Liquid
Storage instructions	Shipped at 4°C. Upon delivery aliquot and store at -20°C or -80°C. Avoid repeated freeze / thaw cycles.
Storage buffer	Preservative: 0.02% Sodium Azide Constituents: 0.5% BSA, Tris-saline. pH 7.3
Purity	Immunogen affinity purified
Purification notes	Purified from goat serum by ammonium sulphate precipitation followed by antigen affinity chromatography using the immunizing peptide.
Clonality	Polyclonal
Isotype	IgG

Applications

Our [Abpromise guarantee](#) covers the use of **ab4545** in the following tested applications.

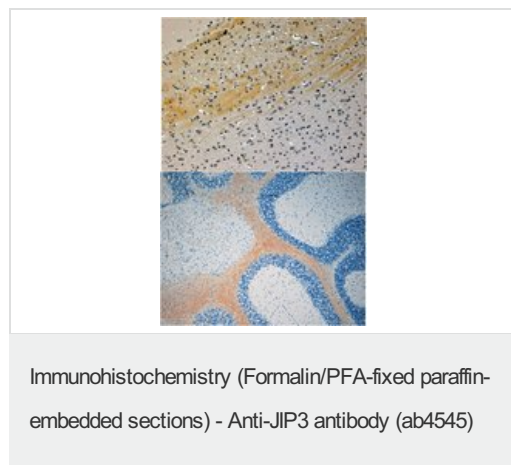
The application notes include recommended starting dilutions; optimal dilutions/concentrations should be determined by the end user.

Application	Abreviews	Notes
WB		Use at an assay dependent concentration.
IHC-P		Use a concentration of 4 - 6 µg/ml. Perform heat mediated antigen retrieval with citrate buffer pH 6 before commencing with IHC staining protocol.

Target

Function	The JNK-interacting protein (JIP) group of scaffold proteins selectively mediates JNK signaling by aggregating specific components of the MAPK cascade to form a functional JNK signaling module. May function as a regulator of vesicle transport, through interactions with the JNK-signaling components and motor proteins.
Sequence similarities	Belongs to the JIP scaffold family.
Post-translational modifications	Phosphorylated upon DNA damage, probably by ATM or ATR.
Cellular localization	Cytoplasm.

Images



ab4545 (4µg/ml) staining of paraffin embedded Mouse Brain. Steamed antigen retrieval with citrate buffer pH 6, HRP-staining. Shows axonal staining in various regions

Please note: All products are "FOR RESEARCH USE ONLY AND ARE NOT INTENDED FOR DIAGNOSTIC OR THERAPEUTIC USE"

Our Abpromise to you: Quality guaranteed and expert technical support

- Replacement or refund for products not performing as stated on the datasheet
- Valid for 12 months from date of delivery
- Response to your inquiry within 24 hours
- We provide support in Chinese, English, French, German, Japanese and Spanish
- Extensive multi-media technical resources to help you

- We investigate all quality concerns to ensure our products perform to the highest standards

If the product does not perform as described on this datasheet, we will offer a refund or replacement. For full details of the Abpromise, please visit <http://www.abcam.com/abpromise> or contact our technical team.

Terms and conditions

- Guarantee only valid for products bought direct from Abcam or one of our authorized distributors