

## Product datasheet

# Anti-KIF3A antibody ab11259

★★★★★ 11 Abreviews 18 References 3 Images

### Overview

<b>Product name</b>	Anti-KIF3A antibody
<b>Description</b>	Rabbit polyclonal to KIF3A
<b>Tested applications</b>	<b>Suitable for:</b> WB, ICC/IF, IHC-P
<b>Species reactivity</b>	<b>Reacts with:</b> Mouse, Rat, Cow, Human
<b>Immunogen</b>	Synthetic peptide conjugated to KLH, corresponding to amino acids 682-701 of Mouse KIF3A. This sequence is identical in human.
<b>Positive control</b>	Rat brain homogenate, PC12 cell line.
<b>General notes</b>	Storage in frost-free freezers is not recommended. If slight turbidity occurs upon prolonged storage, clarify the solution by centrifugation before use.

### Properties

<b>Form</b>	Liquid
<b>Storage instructions</b>	Shipped at 4°C. Upon delivery aliquot and store at -20°C or -80°C. Avoid repeated freeze / thaw cycles.
<b>Storage buffer</b>	Preservative: 15mM Sodium Azide Constituents: 0.01M PBS, pH 7.4
<b>Purity</b>	IgG fraction
<b>Purification notes</b>	Whole antiserum is fractionated and then further purified by ion-exchange chromatography to provide the IgG fraction of antiserum that is essentially free of other rabbit serum proteins.
<b>Clonality</b>	Polyclonal
<b>Isotype</b>	IgG

### Applications

Our [Abpromise guarantee](#) covers the use of **ab11259** in the following tested applications.

The application notes include recommended starting dilutions; optimal dilutions/concentrations should be determined by the end user.

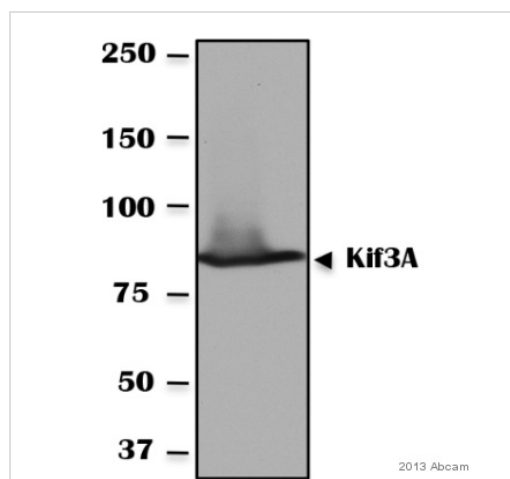
Application	Abreviews	Notes
-------------	-----------	-------

Application	Abreviews	Notes
WB	★★★★★	1/2000. Predicted molecular weight: 85 kDa. This concentration is determined by blotting using a rat brain homogenate and a whole cell extract of rat pheochromocytoma PC12 cell line. Staining of KIF3A is specifically inhibited by the KIF3A immunizing peptide.
ICC/IF	★★★★☆	Use at an assay dependent concentration.
IHC-P		Use at an assay dependent concentration. PubMed: 20421870

## Target

<b>Function</b>	Microtubule-based anterograde translocator for membranous organelles. Plus end-directed microtubule sliding activity in vitro.
<b>Sequence similarities</b>	Belongs to the kinesin-like protein family. Kinesin II subfamily. Contains 1 kinesin-motor domain.
<b>Cellular localization</b>	Cytoplasm > cytoskeleton.

## Images



Developed using the ECL technique

Performed under reducing conditions.

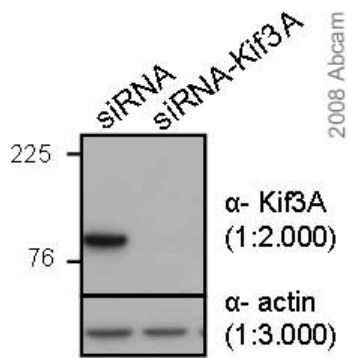
**Predicted band size** : 85 kDa

**Exposure time** : 10 seconds

*This image is courtesy of an anonymous Abreview*

Western blot - Anti-KIF3A antibody (ab11259)

This image is courtesy of an anonymous Abreview



HeLa cells transfected with scramble siRNA (left) or Kif3A siRNA

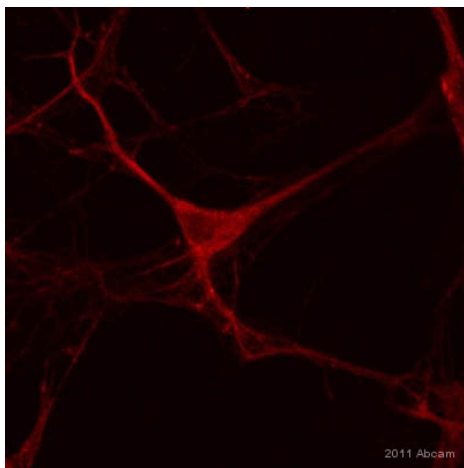
Western blot - Anti-KIF3A antibody (ab11259)

This image is courtesy of an anonymous Abreview

**Predicted band size : 85 kDa**

*This image is courtesy of an anonymous Abreview*

ab11259 (1/2000) detecting KIF3A in Human HeLa Cells. As a control, cells were transfected with scramble siRNA (left) and KIF3A siRNA (right). Please refer to abreview for further experimental details.



Immunocytochemistry/ Immunofluorescence - Anti-KIF3A antibody (ab11259)

Image courtesy of an anonymous Abreview.

ab11259 staining KIF3A in murine primary hippocampal neurons by Immunocytochemistry/ Immunofluorescence. Cells were fixed with methanol, blocked with 1% BSA for 1 hour at 22°C and then incubated with ab11259 at a 1/50 dilution for 2 hours at 22°C. The secondary used was a Cy3-conjugated donkey anti-rabbit polyclonal, used at a 1/500 dilution.

**Please note:** All products are "FOR RESEARCH USE ONLY AND ARE NOT INTENDED FOR DIAGNOSTIC OR THERAPEUTIC USE"

### Our Abpromise to you: Quality guaranteed and expert technical support

- Replacement or refund for products not performing as stated on the datasheet
- Valid for 12 months from date of delivery
- Response to your inquiry within 24 hours
- We provide support in Chinese, English, French, German, Japanese and Spanish
- Extensive multi-media technical resources to help you
- We investigate all quality concerns to ensure our products perform to the highest standards

If the product does not perform as described on this datasheet, we will offer a refund or replacement. For full details of the Abpromise, please visit <http://www.abcam.com/abpromise> or contact our technical team.

## Terms and conditions

---

- Guarantee only valid for products bought direct from Abcam or one of our authorized distributors