

## Product datasheet

# Anti-KIF5B antibody ab91033

[2 Images](#)

### Overview

<b>Product name</b>	Anti-KIF5B antibody
<b>Description</b>	Rabbit polyclonal to KIF5B
<b>Tested applications</b>	<b>Suitable for:</b> WB
<b>Species reactivity</b>	<b>Reacts with:</b> Mouse, Rat, Human
<b>Immunogen</b>	Synthetic peptide corresponding to Human KIF5B aa 350-450 conjugated to Keyhole Limpet Haemocyanin (KLH). Database link: <a href="#">P33176</a> (Peptide available as <a href="#">ab100817</a> )
<b>Positive control</b>	This antibody gave a positive signal in the following lysates: HeLa Whole Cell; HepG2 Whole Cell; HEK293 Whole Cell; Jurkat Whole Cell; Human Brain Tissue; Mouse Brain Tissue; Rat Brain Tissue.

### Properties

<b>Form</b>	Liquid
<b>Storage instructions</b>	Shipped at 4°C. Store at +4°C short term (1-2 weeks). Upon delivery aliquot. Store at -20°C or -80°C. Avoid freeze / thaw cycle.
<b>Storage buffer</b>	Preservative: 0.02% Sodium Azide Constituents: 1% BSA, PBS, pH 7.4
<b>Purity</b>	Immunogen affinity purified
<b>Clonality</b>	Polyclonal
<b>Isotype</b>	IgG

### Applications

Our [Abpromise guarantee](#) covers the use of **ab91033** in the following tested applications.

The application notes include recommended starting dilutions; optimal dilutions/concentrations should be determined by the end user.

Application	Abreviews	Notes
-------------	-----------	-------

Application	Abreviews	Notes
WB		Use a concentration of 1 µg/ml. Detects a band of approximately 125 kDa (predicted molecular weight: 110 kDa).

---

## Target

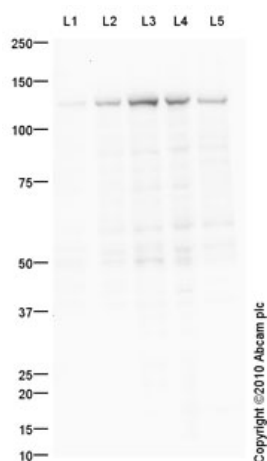
---

<b>Function</b>	Microtubule-dependent motor required for normal distribution of mitochondria and lysosomes.
<b>Sequence similarities</b>	Belongs to the TRAFAC class myosin-kinesin ATPase superfamily. Kinesin family. Kinesin subfamily. Contains 1 kinesin motor domain.
<b>Domain</b>	Composed of three structural domains: a large globular N-terminal domain which is responsible for the motor activity of kinesin (it hydrolyzes ATP and binds microtubule), a central alpha-helical coiled coil domain that mediates the heavy chain dimerization; and a small globular C-terminal domain which interacts with other proteins (such as the kinesin light chains), vesicles and membranous organelles.
<b>Cellular localization</b>	Cytoplasm, cytoskeleton. Uniformly distributed between soma and neurites in hippocampal neurons.

---

## Images

---



Western blot - Anti-KIF5B antibody (ab91033)

**All lanes :** Anti-KIF5B antibody (ab91033)

**Lane 1 :** Human brain tissue lysate - total protein ([ab29466](#))

**Lane 2 :** HeLa (Human epithelial carcinoma cell line) Whole Cell Lysate

**Lane 3 :** HepG2 (Human hepatocellular liver carcinoma cell line) Whole Cell Lysate

**Lane 4 :** HEK293 (Human embryonic kidney cell line) Whole Cell Lysate

**Lane 5 :** Jurkat (Human T cell lymphoblast-like cell line) Whole Cell Lysate

Lysates/proteins at 10 µg per lane.

### Secondary

Goat Anti-Rabbit IgG H&L (HRP) preadsorbed ([ab97080](#)) at 1/5000 dilution

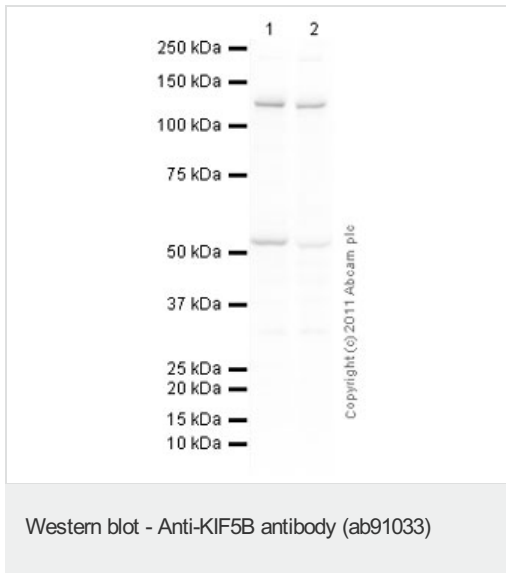
Developed using the ECL technique

Performed under reducing conditions.

**Predicted band size :** 110 kDa

**Observed band size :** 125 kDa

**Exposure time :** 3 minutes The 125 kDa band is consistent with our other antibodies against Kinesin 5B (for example, [ab15705](#), [ab97762](#) and [ab5629](#)). Abcam welcomes customer feedback.



**All lanes** : Anti-KIF5B antibody (ab91033) at 1 µg/ml

**Lane 1** : Brain (Mouse) Tissue Lysate

**Lane 2** : Brain (Rat) Tissue Lysate

Lysates/proteins at 10 µg per lane.

**Secondary**

Goat Anti-Rabbit IgG H&L (HRP) preadsorbed (ab97080) at 1/5000 dilution

Developed using the ECL technique

Performed under reducing conditions.

**Predicted band size** : 110 kDa

**Observed band size** : 125 kDa

**Additional bands at** : 52 kDa. We are unsure as to the identity of these extra bands.

**Exposure time** : 1 minute

**Please note:** All products are "FOR RESEARCH USE ONLY AND ARE NOT INTENDED FOR DIAGNOSTIC OR THERAPEUTIC USE"

**Our Abpromise to you: Quality guaranteed and expert technical support**

- Replacement or refund for products not performing as stated on the datasheet
- Valid for 12 months from date of delivery
- Response to your inquiry within 24 hours
- We provide support in Chinese, English, French, German, Japanese and Spanish
- Extensive multi-media technical resources to help you
- We investigate all quality concerns to ensure our products perform to the highest standards

If the product does not perform as described on this datasheet, we will offer a refund or replacement. For full details of the Abpromise, please visit <http://www.abcam.com/abpromise> or contact our technical team.

**Terms and conditions**

- Guarantee only valid for products bought direct from Abcam or one of our authorized distributors