


Product datasheet

Anti-KIFC1 antibody ab72452

1 References 4 Images

Overview

Product name	Anti-KIFC1 antibody
Description	Rabbit polyclonal to KIFC1
Tested applications	Suitable for: ICC/IF, IHC-P, WB, IP
Species reactivity	Reacts with: Human Predicted to work with: Chimpanzee, Rhesus monkey, Gorilla 
Immunogen	Synthetic peptide corresponding to a region between residues 1 and 50 of human KIFC1 (NP_002254.1).
Positive control	Whole cell lysate from HeLa and 293T cells. This antibody gave a positive result when used in the following methanol fixed cell lines: T47D

Properties

Form	Liquid
Storage instructions	Shipped at 4°C. Upon delivery aliquot and store at -20°C. Avoid freeze / thaw cycles.
Storage buffer	Preservative: 0.09% Sodium Azide Constituents: 8mM PBS, 60mM Citrate, 150mM Tris, pH 7-8
Purity	Immunogen affinity purified
Purification notes	ab72452 was affinity purified using an epitope specific to KIFC1 immobilized on solid support.
Clonality	Polyclonal
Isotype	IgG

Applications

Our [Abpromise guarantee](#) covers the use of **ab72452** in the following tested applications.

The application notes include recommended starting dilutions; optimal dilutions/concentrations should be determined by the end user.

Application	Abreviews	Notes
ICC/IF		Use a concentration of 1 µg/ml.
IHC-P		1/1000 - 1/5000. Perform heat mediated antigen retrieval with Tris/EDTA buffer pH 9.0 before commencing with IHC staining protocol.

WB 1/2000 - 1/10000. Detects a band of approximately 74 kDa (predicted molecular weight: 74 kDa).

IP Use at 2-5 µg/mg of lysate.

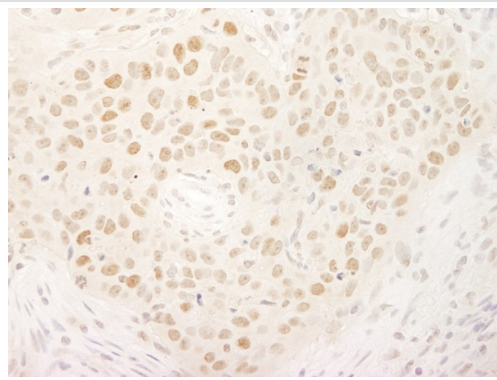
Target

Function Minus end-directed microtubule-dependent motor required for bipolar spindle formation. May contribute to movement of early endocytic vesicles.

Sequence similarities Belongs to the kinesin-like protein family, NCD subfamily.
Contains 1 kinesin-motor domain.

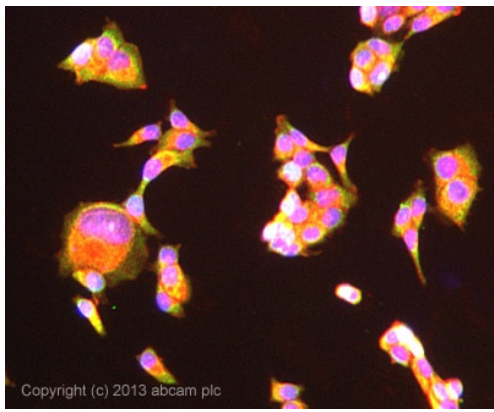
Cellular localization Nucleus. Cytoplasm > cytoskeleton > centrosome. Cytoplasm > cytoskeleton > spindle. Early endosome. Associated with nucleus during interphase, centrosomes in early and spindle in later mitosis.

Anti-KIFC1 antibody images



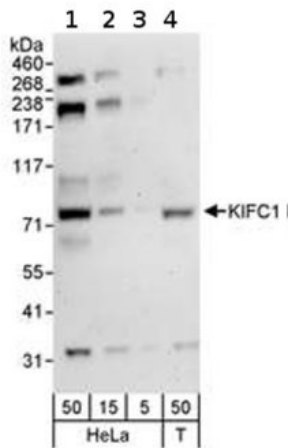
Immunohistochemistry (Formalin/PFA-fixed paraffin-embedded sections) analysis of human ovarian carcinoma tissue labelling KIFC1 with ab72452 at 1/5000 (0.2µg/ml).
Detection: DAB.

Immunohistochemistry (Formalin/PFA-fixed paraffin-embedded sections) - Anti-KIFC1 antibody (ab72452)



Immunocytochemistry/ Immunofluorescence - Anti-KIFC1 antibody (ab72452)

ICC/IF image of ab72452 stained T47D cells. The cells were 100% methanol fixed (5 min) and then incubated in 1%BSA / 10% normal goat serum / 0.3M glycine in 0.1% PBS-Tween for 1h to permeabilise the cells and block non-specific protein-protein interactions. The cells were then incubated with the antibody ab72452 at 1µg/ml overnight at +4°C. The secondary antibody (green) was DyLight® 488 goat anti- rabbit (ab96899) IgG (H+L) used at a 1/250 dilution for 1h. Alexa Fluor® 594 WGA was used to label plasma membranes (red) at a 1/200 dilution for 1h. DAPI was used to stain the cell nuclei (blue) at a concentration of 1.43µM.



Western blot - KIFC1 antibody (ab72452)

All lanes : Anti-KIFC1 antibody (ab72452) at 0.1 µg/ml

Lane 1 : HeLa whole cell lysate at 50 µg

Lane 2 : HeLa whole cell lysate at 15 µg

Lane 3 : HeLa whole cell lysate at 5 µg

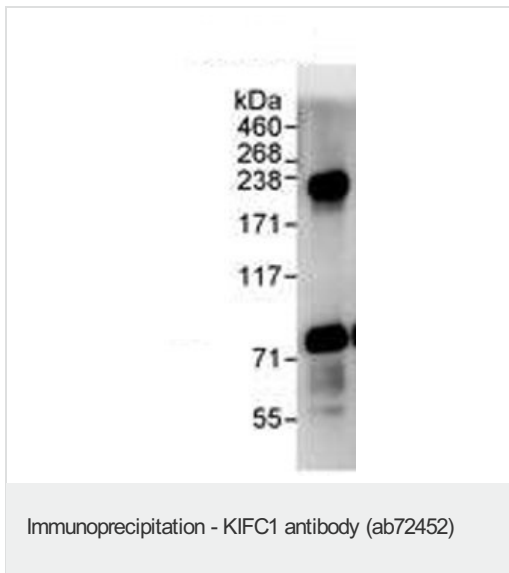
Lane 4 : 293T whole cell lysate at 50 µg

Predicted band size : 74 kDa

Observed band size : 74 kDa

Additional bands at : 220 kDa, 300 kDa, 33 kDa. We are unsure as to the identity of these extra bands.

Exposure time : 3 minutes



HeLa whole cell lysate, (1 mg for IP, 20% of IP loaded) treated with ab72452 at 3µg/mg lysate for IP, and at 1µg/ml for subsequent WB. Detection: Chemiluminescence with an exposure time of 30 seconds.

Please note: All products are "FOR RESEARCH USE ONLY AND ARE NOT INTENDED FOR DIAGNOSTIC OR THERAPEUTIC USE"

Our Abpromise to you: Quality guaranteed and expert technical support

- Replacement or refund for products not performing as stated on the datasheet
- Valid for 12 months from date of delivery
- Response to your inquiry within 24 hours
- We provide support in Chinese, English, French, German, Japanese and Spanish
- Extensive multi-media technical resources to help you
- We investigate all quality concerns to ensure our products perform to the highest standards

If the product does not perform as described on this datasheet, we will offer a refund or replacement. For full details of the Abpromise, please visit <http://www.abcam.com/abpromise> or contact our technical team.

Terms and conditions

- Guarantee only valid for products bought direct from Abcam or one of our authorized distributors