



Product datasheet

Anti-KIN antibody ab22842

3 Images

Overview

Product name	Anti-KIN antibody
Description	Rabbit polyclonal to KIN
Host species	Rabbit
Tested applications	Suitable for: WB, IHC-P
Species reactivity	Reacts with: Human
Immunogen	<p>Synthetic peptide within Human KIN aa 230-279 (internal sequence). The exact sequence is proprietary.</p> <p>Sequence:</p> <p>LKTIGSSASVKRKESQSSSTQSKEKKKKKKSALDEIMEIEEEKKRTARTDY</p> <p>Database link: O60870</p> <p style="text-align: right;">  Run BLAST with  Run BLAST with </p>
Positive control	HepG2 cell lysate

Properties

Form	Liquid
Storage instructions	Shipped at 4°C. Upon delivery aliquot and store at -20°C or -80°C. Avoid repeated freeze / thaw cycles.
Storage buffer	<p>Preservative: None</p> <p>Constituents: 2% Sucrose, PBS</p>
Purification notes	Purified by peptide affinity chromatography. Antibody is lyophilized from PBS buffer with 2% sucrose.
Clonality	Polyclonal
Isotype	IgG

Applications

Our [Abpromise guarantee](#) covers the use of **ab22842** in the following tested applications.

The application notes include recommended starting dilutions; optimal dilutions/concentrations should be determined by the end user.

Application	Abreviews	Notes
WB		Use a concentration of 0.2 - 5 µg/ml. Predicted molecular weight: 45 kDa. Good results were obtained when blocked with 5% non-fat dry milk in 0.05% PBS-T.
IHC-P		Use at an assay dependent concentration.

Target

Function

Involved in DNA replication and the cellular response to DNA damage. May participate in DNA replication factories and create a bridge between DNA replication and repair mediated by high molecular weight complexes. May play a role in illegitimate recombination and regulation of gene expression. May participate in mRNA processing. Binds, in vitro, to double-stranded DNA. Also shown to bind preferentially to curved DNA in vitro and in vivo (By similarity). Binds via its C-terminal domain to RNA in vitro.

Tissue specificity

Ubiquitously expressed in all tissues examined, with highest levels in skeletal muscle, heart and testis. Differentially expressed in non-tumorigenic and tumorigenic cell lines. Highly expressed in proliferating epithelial keratinocyte cells in vitro (at protein level).

Sequence similarities

Belongs to the KIN17 family.
Contains 1 C2H2-type zinc finger.

Domain

The C-terminal domain (268-393) is organized into 2 subdomains that bear structural similarities to SH3-like domains. Both subdomains adopt a similar 5-stranded beta-barrel-like fold and are connected to each other by a short linker of 5 residues. The 5 beta-sheets are packed at approximately right angles against each other. A highly conserved groove formed at the interface between the 2 subdomains, comprised of Lys residues 302 and 391 and other positively charged residues, may possibly be the site of RNA-binding.

Cellular localization

Nucleus. Cytoplasm. During S phase, strongly associated with the nuclear matrix, and to chromosomal DNA in the presence of DNA damage. Also shows cytoplasmic localization in elongated spermatids.

Images



Western blot - KIN antibody (ab22842)

Anti-KIN antibody (ab22842) at 1 $\mu\text{g/ml}$ +
HepG2 cell lysate with 5% skim milk / PBS
buffer

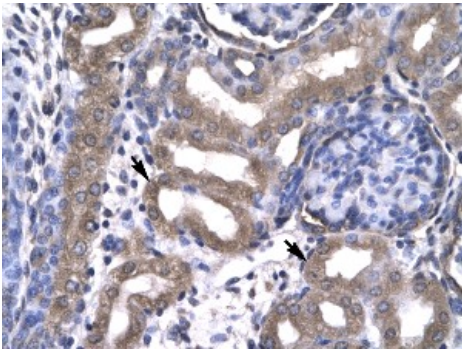
Secondary

HRP conjugated anti-Rabbit IgG diluted in 1:
50,000 - 100,025.

Performed under reducing conditions.

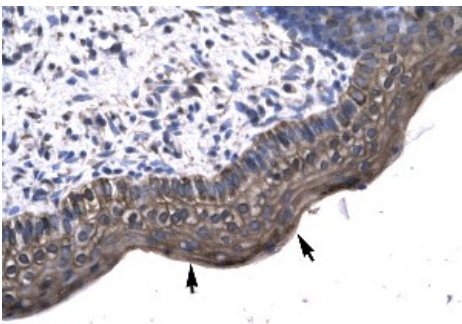
Predicted band size: 45 kDa

Gel concentration 12%



Immunohistochemistry (Paraffin-embedded sections)
- KIN antibody (ab22842)

Paraffin embedded tissue: Human kidney, Cells
with positive label (indicated with arrows):
Epithelial cells of renal tubule, Antibody
concentration: 4-8 $\mu\text{g/ml}$, Magnification: x400



Immunohistochemistry (Paraffin-embedded sections)
- KIN antibody (ab22842)

Paraffin embedded tissue: Human
spermatophore, Cells with positive label
(indicated with arrows): Epithelial cells,
Antibody concentration: 4-8 $\mu\text{g/ml}$,
Magnification: x400

Please note: All products are "FOR RESEARCH USE ONLY AND ARE NOT INTENDED FOR DIAGNOSTIC OR THERAPEUTIC USE"

Our Abpromise to you: Quality guaranteed and expert technical support

- Replacement or refund for products not performing as stated on the datasheet
- Valid for 12 months from date of delivery
- Response to your inquiry within 24 hours

- We provide support in Chinese, English, French, German, Japanese and Spanish
- Extensive multi-media technical resources to help you
- We investigate all quality concerns to ensure our products perform to the highest standards

If the product does not perform as described on this datasheet, we will offer a refund or replacement. For full details of the Abpromise, please visit <http://www.abcam.com/abpromise> or contact our technical team.

Terms and conditions

- Guarantee only valid for products bought direct from Abcam or one of our authorized distributors