

Product datasheet

Anti-KLF13 antibody ab88536

1 Image

Overview

Product name	Anti-KLF13 antibody
Description	Rabbit polyclonal to KLF13
Tested applications	Suitable for: WB
Species reactivity	Reacts with: Human Predicted to work with: Mouse
Immunogen	Synthetic peptide conjugated to KLH derived from within residues 1 - 100 of Human KLF13. Read Abcam's proprietary immunogen policy
Positive control	This antibody gave a positive signal in the following nuclear lysates: HeLa; Jurkat; HepG2; MCF7.

Properties

Form	Liquid
Storage instructions	Shipped at 4°C. Store at +4°C short term (1-2 weeks). Upon delivery aliquot. Store at -20°C or -80°C. Avoid freeze / thaw cycle.
Storage buffer	Preservative: 0.02% Sodium Azide Constituents: 1% BSA, PBS, pH 7.4
Purity	Immunogen affinity purified
Clonality	Polyclonal
Isotype	IgG

Applications

Our [Abpromise guarantee](#) covers the use of **ab88536** in the following tested applications.

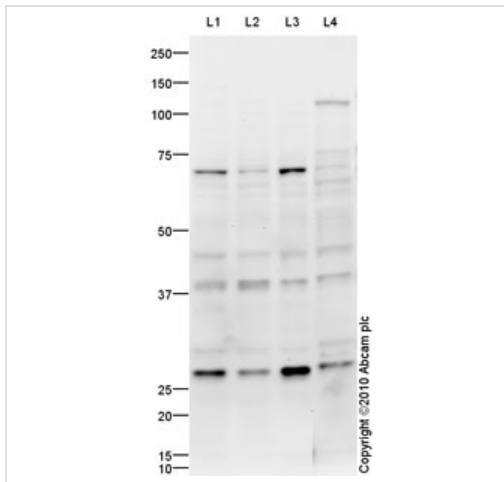
The application notes include recommended starting dilutions; optimal dilutions/concentrations should be determined by the end user.

Application	Abreviews	Notes
WB		Use a concentration of 1 µg/ml. Detects a band of approximately 28 kDa (predicted molecular weight: 31 kDa).

Target

Function	Represses transcription by binding to the BTE site, a GC-rich DNA element, in competition with the activator SP1. It also represses transcription by interacting with the corepressor Sin3A and HDAC1. Activates RANTES expression in T-cells.
Tissue specificity	Ubiquitous.
Sequence similarities	Belongs to the Sp1 C2H2-type zinc-finger protein family. Contains 3 C2H2-type zinc fingers.
Domain	The Ala/Pro-rich domain may contain discrete activation and repression subdomains and also can mediate protein-protein interactions.
Post-translational modifications	Phosphorylated.
Cellular localization	Nucleus.

Images



Western blot - KLF13 antibody (ab88536)

All lanes : Anti-KLF13 antibody (ab88536) at 1 µg/ml

Lane 1 : HeLa (Human epithelial carcinoma cell line) Nuclear Lysate

Lane 2 : Jurkat nuclear extract lysate (ab14844)

Lane 3 : HepG2 (Human hepatocellular liver carcinoma cell line) Nuclear Lysate

Lane 4 : MCF7 nuclear extract lysate (ab14860)

Lysates/proteins at 10 µg per lane.

Secondary

Goat Anti-Rabbit IgG H&L (HRP) preadsorbed (ab97080) at 1/5000 dilution

Developed using the ECL technique

Performed under reducing conditions.

Predicted band size : 31 kDa

Observed band size : 28 kDa

Additional bands at : 40 kDa, 45 kDa, 70 kDa. We are unsure as to the identity of these extra bands.

Exposure time : 12 minutes

Please note: All products are "FOR RESEARCH USE ONLY AND ARE NOT INTENDED FOR DIAGNOSTIC OR THERAPEUTIC USE"

Our Abpromise to you: Quality guaranteed and expert technical support

- Replacement or refund for products not performing as stated on the datasheet
- Valid for 12 months from date of delivery
- Response to your inquiry within 24 hours
- We provide support in Chinese, English, French, German, Japanese and Spanish
- Extensive multi-media technical resources to help you
- We investigate all quality concerns to ensure our products perform to the highest standards

If the product does not perform as described on this datasheet, we will offer a refund or replacement. For full details of the Abpromise, please visit <http://www.abcam.com/abpromise> or contact our technical team.

Terms and conditions

- Guarantee only valid for products bought direct from Abcam or one of our authorized distributors