

## Product datasheet

# Anti-KLF16 antibody ab2718

[1 References](#) [1 Image](#)

### Overview

---

<b>Product name</b>	Anti-KLF16 antibody
<b>Description</b>	Goat polyclonal to KLF16
<b>Tested applications</b>	<b>Suitable for:</b> WB
<b>Species reactivity</b>	<b>Reacts with:</b> Human
<b>Immunogen</b>	Synthetic peptide: PAPSPAPSPAPAGL, corresponding to C terminal amino acids 239-252 of Human KLF16. <a href="#">Run BLAST with ExPASy</a> <a href="#">Run BLAST with NCBI</a>
<b>Positive control</b>	293 lysate
<b>General notes</b>	Principal Names – KLF16; Kruppel-like factor 16; DRRF; BTEB4; NSLP2; BTE-binding protein 4; basic transcription element binding protein 4; likely ortholog of mouse dopamine receptor regulating factor Official Gene Symbol - KLF16 GenBank Accession Number – NP_114124 LocusLink ID - 83855 (human)

### Properties

---

<b>Form</b>	Liquid
<b>Storage instructions</b>	Shipped at 4°C. Upon delivery aliquot and store at -20°C or -80°C. Avoid repeated freeze / thaw cycles.
<b>Storage buffer</b>	Preservative: 0.02% Sodium Azide Constituents: 0.5% BSA, Tris buffered saline, pH 7.3
<b>Purity</b>	IgG fraction
<b>Purification notes</b>	Purified from goat serum by ammonium sulphate precipitation followed by antigen affinity chromatography using the immunizing peptide.
<b>Clonality</b>	Polyclonal
<b>Isotype</b>	IgG

### Applications

---

Our [Abpromise guarantee](#) covers the use of **ab2718** in the following tested applications.

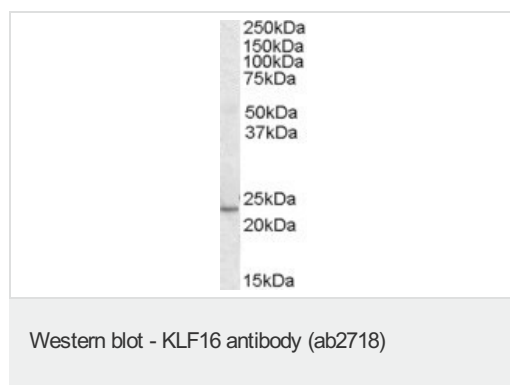
The application notes include recommended starting dilutions; optimal dilutions/concentrations should be determined by the end user.

Application	Abreviews	Notes
WB		Use a concentration of 0.3 - 1 µg/ml. Detects a band of approximately 24 kDa (predicted molecular weight: 25 kDa). Can be blocked with <a href="#">Human KLF16 peptide (ab22933)</a> .

## Target

<b>Function</b>	Transcription factor that binds GC and GT boxes and displaces Sp1 and Sp3 from these sequences. Modulates dopaminergic transmission in the brain.
<b>Sequence similarities</b>	Belongs to the Sp1 C2H2-type zinc-finger protein family. Contains 3 C2H2-type zinc fingers.
<b>Cellular localization</b>	Nucleus.

## Images



**Predicted band size : 25 kDa**

ab2718 staining (0.3 µg/ml) Human heart tissue lysate (RIPA buffer, 35 µg total protein per lane). Primary incubated for 1 hour. Detected by western blot using chemiluminescence.

**Please note:** All products are "FOR RESEARCH USE ONLY AND ARE NOT INTENDED FOR DIAGNOSTIC OR THERAPEUTIC USE"

## Our Abpromise to you: Quality guaranteed and expert technical support

- Replacement or refund for products not performing as stated on the datasheet
- Valid for 12 months from date of delivery
- Response to your inquiry within 24 hours
- We provide support in Chinese, English, French, German, Japanese and Spanish
- Extensive multi-media technical resources to help you
- We investigate all quality concerns to ensure our products perform to the highest standards

If the product does not perform as described on this datasheet, we will offer a refund or replacement. For full details of the Abpromise, please visit <http://www.abcam.com/abpromise> or contact our technical team.

## Terms and conditions

- Guarantee only valid for products bought direct from Abcam or one of our authorized distributors

