


Product datasheet

Anti-KLF9 antibody ab124145

2 Images

Overview

<b>Product name</b>	Anti-KLF9 antibody
<b>Description</b>	Rabbit polyclonal to KLF9
<b>Host species</b>	Rabbit
<b>Tested applications</b>	<b>Suitable for:</b> WB, ICC/IF
<b>Species reactivity</b>	<b>Reacts with:</b> Human <b>Predicted to work with:</b> Mouse, Rat, Pig 
<b>Immunogen</b>	Synthetic peptide conjugated to KLH, corresponding to a region within N terminal amino acids 28-57 of Human KLF9 (NP_001197.1).
<b>Positive control</b>	WiDr cell line lysate

Properties

<b>Form</b>	Liquid
<b>Storage instructions</b>	Shipped at 4°C. Store at 4°C (up to 6 months). Store at -20°C long term.
<b>Storage buffer</b>	Preservative: 0.09% Sodium azide Constituent: 99% PBS
<b>Purity</b>	Immunogen affinity purified
<b>Purification notes</b>	ab124145 was purified through a protein A column, followed by peptide affinity purification.
<b>Clonality</b>	Polyclonal
<b>Isotype</b>	IgG

Applications

Our [Abpromise guarantee](#) covers the use of **ab124145** in the following tested applications.

The application notes include recommended starting dilutions; optimal dilutions/concentrations should be determined by the end user.

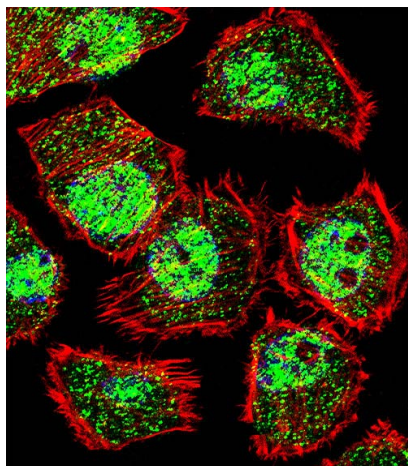
Application	Abreviews	Notes
WB		1/1000. Predicted molecular weight: 27 kDa.

Application	Abreviews	Notes
ICC/IF		1/10 - 1/50.

## Target

<b>Function</b>	Transcription factor that binds to GC box promoter elements. Selectively activates mRNA synthesis from genes containing tandem repeats of GC boxes but represses genes with a single GC box.
<b>Sequence similarities</b>	Belongs to the Sp1 C2H2-type zinc-finger protein family. Contains 3 C2H2-type zinc fingers.
<b>Cellular localization</b>	Nucleus.

## Images



Immunofluorescence - Anti-KLF9 antibody (ab124145)

Immunofluorescence of U251 cells labelling KLF9 with ab124145. U251 cells were fixed with 4% PFA (20 min), permeabilized with Triton X-100 (0.1%, 10 min), then incubated with ab124145 (1:25, 1 h at 37°C). Alexa Fluor® 488 conjugated donkey anti-rabbit antibody (green) was used as the secondary antibody (1:400, 50 min at 37°C). Cytoplasmic actin was counterstained with Alexa Fluor® 555 (red) conjugated Phalloidin (7units/ml, 1 h at 37°C) and nuclei were counterstained with DAPI (blue) (10 µg/ml, 10 min). KLF9 immunoreactivity is localized to vesicles and the nucleus.



Western blot - Anti-KLF9 antibody (ab124145)

Anti-KLF9 antibody (ab124145) at 1/100 dilution + WiDr cell line lysate at 35 µg

**Predicted band size:** 27 kDa

## **Our Abpromise to you: Quality guaranteed and expert technical support**

---

- Replacement or refund for products not performing as stated on the datasheet
- Valid for 12 months from date of delivery
- Response to your inquiry within 24 hours
  
- We provide support in Chinese, English, French, German, Japanese and Spanish
- Extensive multi-media technical resources to help you
- We investigate all quality concerns to ensure our products perform to the highest standards

If the product does not perform as described on this datasheet, we will offer a refund or replacement. For full details of the Abpromise, please visit <http://www.abcam.com/abpromise> or contact our technical team.

## **Terms and conditions**

---

- Guarantee only valid for products bought direct from Abcam or one of our authorized distributors